

Product datasheet for **RC205264**

ALF (GTF2A1L) (NM_006872) Human Tagged ORF Clone

Product data:

Product Type:	Expression Plasmids
Product Name:	ALF (GTF2A1L) (NM_006872) Human Tagged ORF Clone
Tag:	Myc-DDK
Symbol:	ALF
Synonyms:	ALF
Mammalian Cell Selection:	Neomycin
Vector:	pCMV6-Entry (PS100001)
E. coli Selection:	Kanamycin (25 ug/mL)



[View online »](#)

ORF Nucleotide Sequence:

>RC205264 ORF sequence
 Red=Cloning site Blue=ORF Green=Tags(s)

TTTTGTAATACGACTCACTATAGGGCGGCCGGAATTCGTCGACTGGATCCGGTACCGAGGAGATCTGCC
 GCC**GCGATCGCC**

ATGGCCTGCCTCAACCCGGTGCCTAAACTCTACAGATCTGTAATTGAAGATGTAATTGAAGGAGTTCGGA
 ATCTATTTGCTGAAGAAGGTATAGAGGAACAAGTTTTAAAGACTTGAAGCAGCTCTGGAAACCAAGGT
 TTTGCAGTCTAAAGCAACAGAAGACTTCTTCAGAAATAGCATCCAATCACCTCTGTTTACTCTTCAGTTG
 CCGCACAGCTTGCACCAACATTGCAATCGTCAACAGCATCATTAGTTATTCCTGCTGGTAGAACTTTC
 CAAGTTTTACCACAGCAGAAGCTGGGCACCTCAAACCTCCAGTGCAAACCTTACTTTTCTGGTTATCCCAT
 TCATGTACCAGCAGGTGTGACACTACAGACTGTATCTGGTCACCTTTATAAAGTCAATGTACCAATTATG
 GTGACAGAGACTTCTGGAAGAGCAGGTATTCTTCAGCATCCAATTCAGCAAGTATTTCAACAGCTTGGCC
 AGCCTTCAGTAATAAACTAGTGTCCACAATTGAATCCATGGTCTCTCAAGCAACTACTGAAAAATC
 ACAGAGAATTGAAACCGTCTACAGCAACCCGCAATTCTACCTTCTGGCCAGTAGATAGGAAACACTTA
 GAAAAATGCCACCACTGATATACTTGTATCTCTGGAAATGAGCATAAAATCGTGCCTGAAGCTTTGTTGT
 GTCATCAGGAAAGTTCTCACTATATCAGTCTTCCAGGTGTTGATTTTTCTCCACAGGTCTCTCAAACAAA
 TTCTAATGTGGAGTCAGTGTCTAGTGGTTCAGCTAGCATGGCTCAAAATCTGCATGATGAGTCCCTCTCC
 ACAAGCCCTCATGGGGCTCTCCACCAGCAGCTGACTGATATTCAGCTTCATTTCTTAAAAATAGGATGT
 ATGGATGTGATTCTGTAAGCAACCAAGAAATATAGAGGAACCCAGCAACATACCTGTATCAGAGAAGGA
 TTCTAATTTCTCAGGTGGATTTAAGCATTCCGGTTACTGATGATGATATTGGTGAATAATTCAAGTAGAT
 GGAAGCGGTGATACATCTTCCAATGAAGAAATAGGAAGTACAAGAGATGCAGATGAGAATGAATTTCTAG
 GGAATATTGACGGGGAGATCTGAAGTACCTGAAGAAGAAGCTGACAGTATTTCAAATGAGGATTCAGC
 CACAAACAGTAGTGATAATGAAGACCCTCAAGTAAACATTGTAGAAGAGGACCCTTTAAATTTCTGGAGAT
 GATGTTAGTGAACAGGATGTGCCAGACCTGTTTACACGGATAATGTTATTGTCTGTCAGTATGATAAGA
 TTCATCGAAGCAAGAACAATGGAATTTCTATTTGAAAGATGGTGTATGTGTTTTGGAGGGAGAGACTA
 TGTATTTGCAAAAGCCATTGGTGTATGCAGAGTGG

ACGCGTACGCGGCCGCTCGAGCAGAAACTCATCTCAGAAGAGGATCTGGCAGCAATGATATCTGGATT
 ACAAGGATGACGACGATAAGGTTTAA

Protein Sequence:

>RC205264 protein sequence
 Red=Cloning site Green=Tags(s)

MACLNPVPKLYRSVIEDVIEGVRNLF AEEGIEEQVLKDLKQLWETKVLQSKATEDFFRNSIQSPLFTLQL
 PHSLHQTLQSSTASLVIPAGRTLPSFTTAELGTSNSSANFTFPGYPIHVPAGVTLQTVSGHLYKVNVPIM
 VTETSGRAGILQHPIQQVFQQLGQPSVIQTSVPQLNPWSLQATTEKSQRJETVLQQPAILPSGPVDRKHL
 ENATSDILVSPGNEHKIVPEALLCHQESSHYISLPGVVFSPQVSQTNSNVESVLSGSASMAQNLHDESLS
 TSPHGALHQHVTDIQLHLKRNMYGCD SVKQPRNIEEPSNIPVSEKDSNSQVDLSIRVTD DDDIGEIIQVD
 GSGDTSNNEEIGSTRADENEFLGNIDGGDLKVP EEEADSI SNEDSATNSSDNEDPQVNI VEEDPLNSGD
 DVSEQDVPDLFDTDNIVICQYDKIHRSKNKWFKY LKDGVMCFGGRDYVFAKAIGDAEW

TRTRPLEQKLI SEEDLAANDILDYKDDDDKV

Chromatograms:

https://cdn.origene.com/chromatograms/mk6315_c06.zip

Restriction Sites:

SgfI-MluI

Cloning Scheme:

Cloning sites used for ORF Shutting:



* The last codon before the Stop codon of the ORF

ACCN: NM_006872

ORF Size: 1434 bp

OTI Disclaimer: The molecular sequence of this clone aligns with the gene accession number as a point of reference only. However, individual transcript sequences of the same gene can differ through naturally occurring variations (e.g. polymorphisms), each with its own valid existence. This clone is substantially in agreement with the reference, but a complete review of all prevailing variants is recommended prior to use. [More info](#)

OTI Annotation: This clone was engineered to express the complete ORF with an expression tag. Expression varies depending on the nature of the gene.

Components: The ORF clone is ion-exchange column purified and shipped in a 2D barcoded Matrix tube containing 10ug of transfection-ready, dried plasmid DNA (reconstitute with 100 ul of water).

Reconstitution Method:

1. Centrifuge at 5,000xg for 5min.
2. Carefully open the tube and add 100ul of sterile water to dissolve the DNA.
3. Close the tube and incubate for 10 minutes at room temperature.
4. Briefly vortex the tube and then do a quick spin (less than 5000xg) to concentrate the liquid at the bottom.
5. Store the suspended plasmid at -20°C. The DNA is stable for at least one year from date of shipping when stored at -20°C.

RefSeq: [NM_006872.5](#)
RefSeq Size: 1710 bp

RefSeq ORF: 1437 bp

Locus ID: 11036

UniProt ID: [Q9UNN4](#)
Cytogenetics: 2p16.3

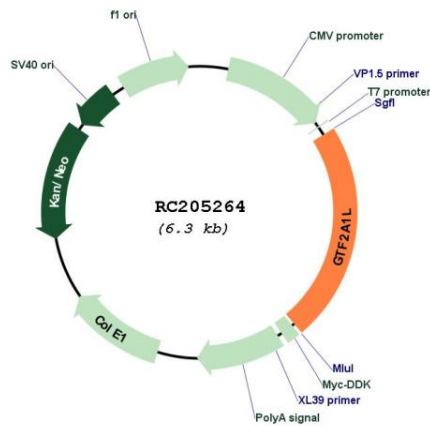
Protein Families: Transcription Factors

Protein Pathways: Basal transcription factors

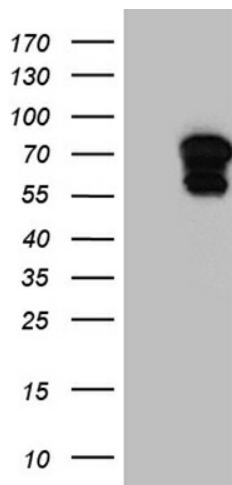
MW: 52.4 kDa

Gene Summary: The assembly and stability of the RNA polymerase II transcription pre-initiation complex on a eukaryotic core promoter involve the effects of transcription factor IIA (TFIIA) on the interaction between TATA-binding protein (TBP) and DNA. This gene encodes a germ cell-specific counterpart of the large (alpha/beta) subunit of general transcription factor TFIIA that is able to stabilize the binding of TBP to DNA and may be uniquely important to testis biology. Alternative splicing for this locus has been observed and two variants, encoding distinct isoforms, have been identified. Co-transcription of this gene and the neighboring upstream gene generates a rare transcript (SALF), which encodes a fusion protein comprised of sequence sharing identity with each individual gene product. [provided by RefSeq, Mar 2014]

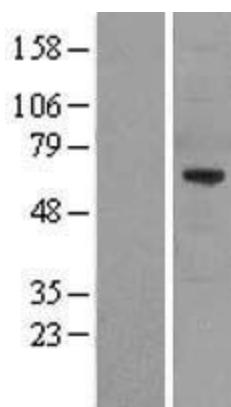
Product images:



Circular map for RC205264



HEK293T cells were transfected with the pCMV6-ENTRY control (Cat# [PS100001], Left lane) or pCMV6-ENTRY GTF2A1L (Cat# RC205264, Right lane) cDNA for 48 hrs and lysed. Equivalent amounts of cell lysates (5 ug per lane) were separated by SDS-PAGE and immunoblotted with anti-GTF2A1L (Cat# [TA810959])(1:2000). Positive lysates [LY416352] (100ug) and [LC416352] (20ug) can be purchased separately from OriGene.



Western blot validation of overexpression lysate (Cat# [LY416352]) using anti-DDK antibody (Cat# [TA50011-100]). Left: Cell lysates from untransfected HEK293T cells; Right: Cell lysates from HEK293T cells transfected with RC205264 using transfection reagent MegaTran 2.0 (Cat# [TT210002]).