

Product datasheet for **RC205262**

SCML1 (NM_006746) Human Tagged ORF Clone

Product data:

Product Type:	Expression Plasmids
Product Name:	SCML1 (NM_006746) Human Tagged ORF Clone
Tag:	Myc-DDK
Symbol:	SCML1
Mammalian Cell Selection:	Neomycin
Vector:	pCMV6-Entry (PS100001)
E. coli Selection:	Kanamycin (25 ug/mL)
ORF Nucleotide Sequence:	>RC205262 ORF sequence Red=Cloning site Blue=ORF Green=Tags(s)

TTTTGTAATACGACTCACTATAGGGCGGCCGGAATTCGTCGACTGGATCCGGTACCGAGGAGATCTGCC
GCC**CGATCGCC**

ATGATGTCTAACAGCTCCAGTGAATCGATGTGCAGGAACCGAATATTGTATCTGACGCATCCTGTAATA
CTGAAGAGCAACTGAAGACAGTTGATGATGTCCTTATTCATTGCCAGGTTATATATGATGCTCTGCAAAA
CCTGGATAAGAAGATTGATGTGATTCGTAGAAAAGGTTTCAAAAATCCAACGTTTCCATGCGAGATCCCTG
TGGACAAATCATAAGCGATATGGATATAAAAAGCATTCTACCGGCTTGTTAAAAAGCTTAACTCCAGA
AAATGAAGAAAAATGAGGTTTACGAGACATTCTCTACCCTGAAAGTTACAGCCCCACTTTACAGTGTC
AAGGCGTGAGAATAATTCCTCCGAGCAACCTTCCAAGGCCATCCTTTTGCATGGAAGAATACCGAGGAGCT
GAGCTGGAGGAGGACCCGATCCTCAGCCGCACTCCGAGTCCAGTGCATCCCTCAGATTTCTCTGAGCATA
ATTGTCAGCCGTATTATGCATCTGATGGTGCAACGTATGGTTCTTCTTCAGGGCTCTGCCTTGGCAACCC
TCGGGCTGACAGCATCCACAACCTTACTCAACTGACCATGCTTCTGCAGCACCACCTTCAGTTACAAGG
TCACCAGTTGAAAATGACGGTTACATAGAGGAAGGAAGCATCACTAAGCACCTTCAACCTGGTCGGTGG
AAGCAGTGGTCTATTTCTAAAACAAACAGATCCTCTTGATTATGCCCTCTTGTGACCTTTCAGAAG
CCATGAAATTGACGGGAAGGCTCTGCTCCTACTCAGAGTGACGTGTTGCTGAAGCACTTGGGGTGAAG
CTGGGAACGGCTGTGAAGCTATGCTACTACATTGACCGACTTAAACAAGGAAAATGCTTTGAAAAT

ACGCGTACGCGGCCGCTCGAGCAGAACTCATCTCAGAAGAGGATCTGGCAGCAAATGATATCCTGGATT
ACAAGGATGACGACGATAAGGTTTAA



[View online »](#)

Protein Sequence: >RC205262 protein sequence
Red=Cloning site Green=Tags(s)

MMSNSSEIDVQEPNIVSDASCNTEEQLKTVDDVLIHCQVIYDALQNLDDKIDVIRRKVSKIQRFHARSL
 WTNHKRYGYKKHSYRLVKKLLKQMKKNEVYETFSYPEYSPTLPVSRRENNSPSNLPRPFCMEEYQRA
 ELEEDPILSRTPSPVHPSDFSEHNCQPYASDGATYGSSSGLCLGNPRADSIHNTYSTDHASAAPPSVTR
 SPVENDGYIEEGSITKHPSTWSVEAVVLFKQTDPLALCPLVDLFRSHEIDGKALLLLTSDVLLKHLGVK
 LGTAVKLCYYIDRLKQKCFEN

TRTRPLEQKLISEEDLAANDILDYKDDDDKV

Chromatograms: https://cdn.origene.com/chromatograms/mk6315_h02.zip

Restriction Sites: SgfI-MluI

Cloning Scheme:

Cloning sites used for ORF Shuttling:



* The last codon before the Stop codon of the ORF

ACCN: NM_006746

ORF Size: 906 bp

OTI Disclaimer: The molecular sequence of this clone aligns with the gene accession number as a point of reference only. However, individual transcript sequences of the same gene can differ through naturally occurring variations (e.g. polymorphisms), each with its own valid existence. This clone is substantially in agreement with the reference, but a complete review of all prevailing variants is recommended prior to use. [More info](#)

OTI Annotation: This clone was engineered to express the complete ORF with an expression tag. Expression varies depending on the nature of the gene.

Components: The ORF clone is ion-exchange column purified and shipped in a 2D barcoded Matrix tube containing 10ug of transfection-ready, dried plasmid DNA (reconstitute with 100 ul of water).

Reconstitution Method:

1. Centrifuge at 5,000xg for 5min.
2. Carefully open the tube and add 100ul of sterile water to dissolve the DNA.
3. Close the tube and incubate for 10 minutes at room temperature.
4. Briefly vortex the tube and then do a quick spin (less than 5000xg) to concentrate the liquid at the bottom.
5. Store the suspended plasmid at -20°C. The DNA is stable for at least one year from date of shipping when stored at -20°C.

RefSeq: [NM_006746.6](#)

RefSeq Size: 2853 bp

RefSeq ORF: 909 bp

Locus ID: 6322

UniProt ID: [Q9UN30](#)

Cytogenetics: Xp22.13

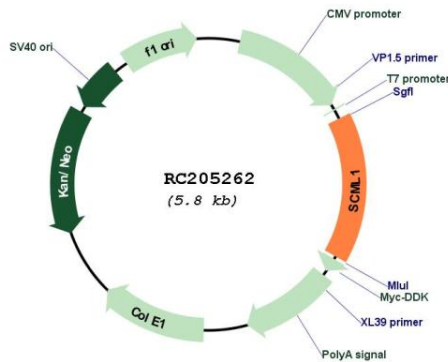
Domains: SAM

Protein Families: Transcription Factors

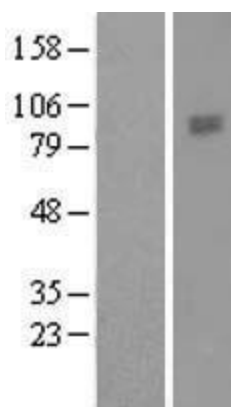
MW: 34.2 kDa

Gene Summary: Putative Polycomb group (PcG) protein. PcG proteins act by forming multiprotein complexes, which are required to maintain the transcriptionally repressive state of homeotic genes throughout development. May be involved in spermatogenesis during sexual maturation (By similarity).[UniProtKB/Swiss-Prot Function]

Product images:



Circular map for RC205262



Western blot validation of overexpression lysate (Cat# [LY416443]) using anti-DDK antibody (Cat# [TA50011-100]). Left: Cell lysates from untransfected HEK293T cells; Right: Cell lysates from HEK293T cells transfected with RC205262 using transfection reagent MegaTran 2.0 (Cat# [TT210002]).