

## Product datasheet for **RC205258**

### CRHBP (NM\_001882) Human Tagged ORF Clone

#### Product data:

Product Type:	Expression Plasmids
Product Name:	CRHBP (NM_001882) Human Tagged ORF Clone
Tag:	Myc-DDK
Symbol:	CRHBP
Synonyms:	CRF-BP; CRFBP
Mammalian Cell Selection:	Neomycin
Vector:	pCMV6-Entry (PS100001)
E. coli Selection:	Kanamycin (25 ug/mL)
ORF Nucleotide Sequence:	>RC205258 representing NM_001882 Red=Cloning site Blue=ORF Green=Tags(s)

TTTTGTAATACGACTCACTATAGGGCGGCCGGAATTCGTCGACTGGATCCGGTACCGAGGAGATCTGCC  
GCC**CGATCGCC**

ATGTGCGCCAACCTCAAACCTTCAGTGTCACTTCATTCTCATCTTCTGACGGCTCTAAGAGGGGAAAGCC  
GGTACCTAGAGCTGAGGGAAGCGCGGACTACGATCCTTTCTGCTCTTCAGCGCCAACCTGAAGCGGGA  
GCTGGCTGGGAGCAGCCGTACCGCCGCGCTCTGCGGTGCCTGGACATGCTGAGCCTCCAGGGCCAGTTC  
ACCTTCACGCGCCACCGCCGCGAGCTGCACTGCGCAGCCTTCTTCATCAGCGAGCCCGAGGAGTTCATTA  
CCATCCACTACGACCAGGTCTCCATCGACTGTCAAGGGCGGCGACTTCTGAAGGTATTTGATGGTTGGAT  
TCTCAAGGGGAGAAGTTCCCCAGTTCAGGATCATCCTCTCCCTCAGCTGAGCGGTACATAGATTTTC  
TGTGAGAGTGGTCTTAGCAGGAGGAGCATCAGATCTTCCAGAATGTGGCCATGATCTTCTCCGAGTCC  
ATGAACCAGGAAATGGATTACATTAACCATAAAGACAGACCCCAACCTCTTTCCTTGAATGTCATTTTC  
TCAGACTCCAAATGGAAGTTTACCCTGGTAGTTCCACACCAGCATCGAAACTGCAGCTTCTCCATAATT  
TATCCTGTGGTGATCAAATATCTGATCTTACCCTGGGACACGTAATGGTCTTCAGTTAAAGAAATCCT  
CAGCAGTTGCGAGGGAATAGGAGACTTGTGGAGCTGCTGGGAGGAAGTGGATTGGACCCTTCCAAGAT  
GACGCTTTAGCTGATCTCTGCTACCCCTTTCATGGCCCGGCCAGATGAAAGTTGGCTGTGACAACACT  
GTGGTGCGCATGGTCTCCAGTGGAAAACAGTAAATCGTGTGACTTTTGAGTATCGTCAGCTGGAGCCGT  
ACGAGCTGGAAAACCAAATGGAACAGTATCGGGGAATTCGTTTGTCTGGTCTT

**ACGCGT**ACGCGGCCGCTCGAGCAGAAACTCATCTCAGAAGAGGATCTGGCAGCAAATGATATCCTGGATT  
ACAAGGATGACGACGATAAGGTTTAA



[View online »](#)

**Protein Sequence:** >RC205258 representing NM\_001882  
Red=Cloning site Green=Tags(s)

MSPNFKLQCHFILIFLTALRGESRYLELREAADYDPFLLFSANLKRELAGEQPYRRALRCLDMLSLQGQF  
 TFTADRPQLHCAAFFISEPEEFITIHVDQVSIDCQGGDFLKVFDGWILKGEKFPSSQDHPLPSAERYIDF  
 CESGLSRRSIRSSQNVAMIFFRVHEPGNGFTLTIKTDPNLFPCNVISQTPNGKFTLVVPHQHRNCSFSII  
 YPVVIKISDLTLGHVNLQLKSSAGCEGIGDFVELLGGTGLDPSKMTPLADLCYPFHGPAQMKVGCNDT  
 VVRMVSSGKHVNRVTFEYRQLEPYELENPNGNSIGEFCLSGL

TRTRPLEQKLISEEDLAANDILDYKDDDDKV

**Chromatograms:** [https://cdn.origene.com/chromatograms/mg2928\\_g07.zip](https://cdn.origene.com/chromatograms/mg2928_g07.zip)

**Restriction Sites:** SgfI-MluI

**Cloning Scheme:**

Cloning sites used for ORF Shuttling:



\* The last codon before the Stop codon of the ORF

**ACCN:** NM\_001882

**ORF Size:** 966 bp

**OTI Disclaimer:** The molecular sequence of this clone aligns with the gene accession number as a point of reference only. However, individual transcript sequences of the same gene can differ through naturally occurring variations (e.g. polymorphisms), each with its own valid existence. This clone is substantially in agreement with the reference, but a complete review of all prevailing variants is recommended prior to use. [More info](#)

**OTI Annotation:** This clone was engineered to express the complete ORF with an expression tag. Expression varies depending on the nature of the gene.

**Components:** The ORF clone is ion-exchange column purified and shipped in a 2D barcoded Matrix tube containing 10ug of transfection-ready, dried plasmid DNA (reconstitute with 100 ul of water).

**Reconstitution Method:**

1. Centrifuge at 5,000xg for 5min.
2. Carefully open the tube and add 100ul of sterile water to dissolve the DNA.
3. Close the tube and incubate for 10 minutes at room temperature.
4. Briefly vortex the tube and then do a quick spin (less than 5000xg) to concentrate the liquid at the bottom.
5. Store the suspended plasmid at -20°C. The DNA is stable for at least one year from date of shipping when stored at -20°C.

**RefSeq:** [NM\\_001882.4](#)

**RefSeq Size:** 1854 bp

**RefSeq ORF:** 969 bp

**Locus ID:** 1393

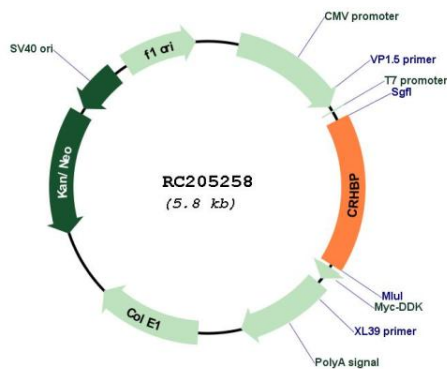
**UniProt ID:** [P24387](#)

**Cytogenetics:** 5q13.3

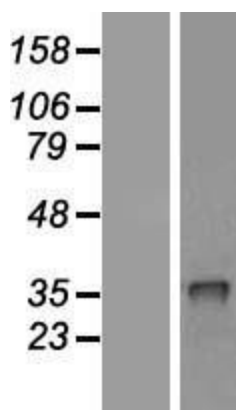
**MW:** 36 kDa

**Gene Summary:** Corticotropin-releasing hormone is a potent stimulator of synthesis and secretion of preopiomelanocortin-derived peptides. Although CRH concentrations in the human peripheral circulation are normally low, they increase throughout pregnancy and fall rapidly after parturition. Maternal plasma CRH probably originates from the placenta. Human plasma contains a CRH-binding protein which inactivates CRH and which may prevent inappropriate pituitary-adrenal stimulation in pregnancy. [provided by RefSeq, Jul 2008]

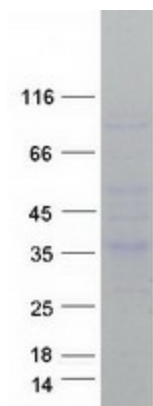
**Product images:**



Circular map for RC205258



Western blot validation of overexpression lysate (Cat# [LY419679]) using anti-DDK antibody (Cat# [TA50011-100]). Left: Cell lysates from untransfected HEK293T cells; Right: Cell lysates from HEK293T cells transfected with RC205258 using transfection reagent MegaTran 2.0 (Cat# [TT210002]).



Coomassie blue staining of purified CRHBP protein (Cat# [TP305258]). The protein was produced from HEK293T cells transfected with CRHBP cDNA clone (Cat# RC205258) using MegaTran 2.0 (Cat# [TT210002]).