

Product datasheet for RC205256

WIF1 (NM_007191) Human Tagged ORF Clone

Product data:

Product Type:	Expression Plasmids
Product Name:	WIF1 (NM_007191) Human Tagged ORF Clone
Tag:	Myc-DDK
Symbol:	WIF1
Synonyms:	WIF-1
Mammalian Cell Selection:	Neomycin
Vector:	pCMV6-Entry (PS100001)
E. coli Selection:	Kanamycin (25 ug/mL)
ORF Nucleotide Sequence:	>RC205256 ORF sequence Red=Cloning site Blue=ORF Green=Tags(s)

TTTTGTAATACGACTCACTATAGGGCGGCCGGAATTCGTCGACTGGATCCGGTACCGAGGAGATCTGCC
GCC**CGATCGCC**

ATGGCCCCGAGGAGCGCCTTCCCTGCCGCCGCGCTCTGGCTCTGGAGCATCCTCCTGTGCCTGCTGGCAC
TGCGGGCGGAGGCCGGCCGCCGAGGAGAGCCTGTACCTATGGATCGATGCTCACCAGGCAAGAGT
ACTCATAGGATTTGAAGAAGATATCCTGATTGTTTCGGAGGGGAAAATGGCACCTTTACACATGATTTT
AGAAAAGCGCAACAGAGAATGCCAGCTATTCCTGTCAATATCCATTCCATGAATTTTACCTGGCAAGCTG
CAGGGCAGGCAGAATACTTCTATGAATTCCTGTCTTGGCTCCCTGGATAAAGGCATCATGGCAGATCC
AACCGTCAATGTCCCTCTGCTGGAACAGTGCCTCACAAGGCATCAGTTGTTCAAGTTGGTTTCCCATGT
CTTGAAAAACAGGATGGGGTGGCAGCATTGAAGTGGATGTGATTGTTATGAATTCTGAAGGCAACACCA
TTCTCAAAACACCTCAAAATGCTATCTTCTTTAAAACATGTCAACAAGCTGAGTGCCAGGGGGTGGCCG
AAATGGAGGCTTTTGTAAATGAAAGACGCATCTGCGAGTGTCTGATGGGTTCCACGGACCTCACTGTGAG
AAAGCCCTTTGTACCCACGATGTATGAATGGTGGACTTTGTGTGACTCCTGGTTTCTGCATCTGCCAC
CTGGATTCTATGGAGTGAAGTGTGACAAAGCAAAGTGTCAACCACCTGCTTTAATGGAGGGACCTGTTT
CTACCCTGAAAAATGATTTGCCCTCCAGGACTAGAGGGAGAGCAGTGTGAAATCAGCAAATGCCACAA
CCCTGTGCGAAATGGAGGTAATGCATTGGTAAAAGCAAATGTAAGTGTCCAAAGGTTACCAGGGAGAGC
TCTGTTCAAAGCCTGTCTGCGAGCCTGGCTGTGGTGACATGGAACCTGCCATGAACCCAAACAAATGCCA
ATGTCAAGAAGGTTGGCATGGAAGACACTGCAATAAAAGGTACGAAGCCAGCCTCATACATGCCCTGAGG
CCAGCAGGCGCCAGCTCAGGCAGCACAGCCTTCACTTAAAAGGCCGAGGAGCGGGATCCACCTG
AATCCAATTACATCTGG

ACGCGTACGCGGCCGCTCGAGCAGAAACTCATCTCAGAAGAGGATCTGGCAGCAAATGATATCCTGGATT
ACAAGGATGACGACGATAAGGTTTAA



[View online »](#)

Protein Sequence: >RC205256 protein sequence
Red=Cloning site Green=Tags(s)

MARRSAFPAALWLSILLCLLALRAEAGPPQEESLYLWIDAHQARVLIGFEEDILIVSEGKMAPFTHDF
 RKAQQRMPAIPVNIHSMNFTWQAAGQAEYFYEFSLRSLDKGIMADPTVNVPLLTGTVPHKASVVQVGFPC
 LGKQDGVAAFEVDVIVMNSEGNTILKTPQNAIFFKTCQQAECPPGCRNGGFCNERRICECPDGFHGPHE
 KALCTPRCMNGGLCVTPGFCICPPGFYVNCDDKANCSTTCFNGGTCFYPGKCICPPGLEGEQCEISKCPQ
 PCRNGGKCI GKSKCKCSKGYQGDLCSKPVCEPGCGAHTCHEPNKCQCQEGWHGRHCNKRYEASLIHALR
 PAGAQLRQHTPSLKKAEERRDPPESNYIW

TRTRPLEQKLISEEDLAANDILDYKDDDDKV

Chromatograms: https://cdn.origene.com/chromatograms/mk6138_c04.zip

Restriction Sites: SgfI-MluI

Cloning Scheme:



ACCN: NM_007191

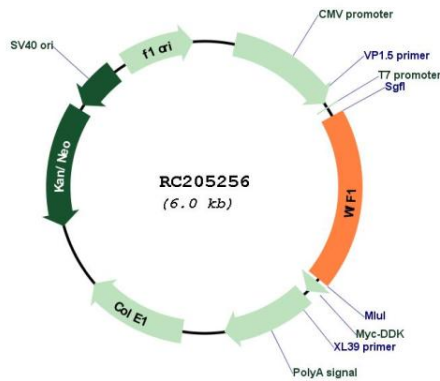
ORF Size: 1137 bp

OTI Disclaimer: Due to the inherent nature of this plasmid, standard methods to replicate additional amounts of DNA in E. coli are highly likely to result in mutations and/or rearrangements. Therefore, OriGene does not guarantee the capability to replicate this plasmid DNA. Additional amounts of DNA can be purchased from OriGene with batch-specific, full-sequence verification at a reduced cost. Please contact our customer care team at custsupport@origene.com or by calling 301.340.3188 option 3 for pricing and delivery.

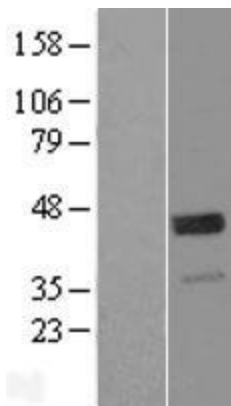
The molecular sequence of this clone aligns with the gene accession number as a point of reference only. However, individual transcript sequences of the same gene can differ through naturally occurring variations (e.g. polymorphisms), each with its own valid existence. This clone is substantially in agreement with the reference, but a complete review of all prevailing variants is recommended prior to use. [More info](#)

OTI Annotation:	This clone was engineered to express the complete ORF with an expression tag. Expression varies depending on the nature of the gene.
Components:	The ORF clone is ion-exchange column purified and shipped in a 2D barcoded Matrix tube containing 10ug of transfection-ready, dried plasmid DNA (reconstitute with 100 ul of water).
Reconstitution Method:	<ol style="list-style-type: none">1. Centrifuge at 5,000xg for 5min.2. Carefully open the tube and add 100ul of sterile water to dissolve the DNA.3. Close the tube and incubate for 10 minutes at room temperature.4. Briefly vortex the tube and then do a quick spin (less than 5000xg) to concentrate the liquid at the bottom.5. Store the suspended plasmid at -20°C. The DNA is stable for at least one year from date of shipping when stored at -20°C.
RefSeq:	NM_007191.5
RefSeq Size:	2240 bp
RefSeq ORF:	1140 bp
Locus ID:	11197
UniProt ID:	Q9Y5W5
Cytogenetics:	12q14.3
Domains:	WIF, EGF, EGF
Protein Families:	Cancer stem cells, Druggable Genome, ES Cell Differentiation/IPS, Secreted Protein, Stem cell relevant signaling - Wnt Signaling pathway
Protein Pathways:	Wnt signaling pathway
MW:	41.5 kDa
Gene Summary:	The protein encoded by this gene functions to inhibit WNT proteins, which are extracellular signaling molecules that play a role in embryonic development. This protein contains a WNT inhibitory factor (WIF) domain and five epidermal growth factor (EGF)-like domains, and is thought to be involved in mesoderm segmentation. This gene functions as a tumor suppressor gene, and has been found to be epigenetically silenced in various cancers. [provided by RefSeq, Jun 2010]

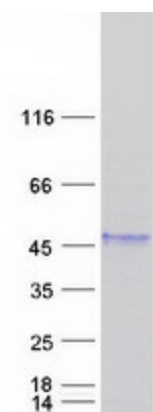
Product images:



Circular map for RC205256



Western blot validation of overexpression lysate (Cat# [LY402102]) using anti-DDK antibody (Cat# [TA50011-100]). Left: Cell lysates from untransfected HEK293T cells; Right: Cell lysates from HEK293T cells transfected with RC205256 using transfection reagent MegaTran 2.0 (Cat# [TT210002]).



Coomassie blue staining of purified WIF1 protein (Cat# [TP305256]). The protein was produced from HEK293T cells transfected with WIF1 cDNA clone (Cat# RC205256) using MegaTran 2.0 (Cat# [TT210002]).