

Product datasheet for **RC205246**

DIAPH3 (NM_030932) Human Tagged ORF Clone

Product data:

Product Type:	Expression Plasmids
Product Name:	DIAPH3 (NM_030932) Human Tagged ORF Clone
Tag:	Myc-DDK
Symbol:	DIAPH3
Synonyms:	AN; AUNA1; DIA2; diap3; DRF3; mDia2; NSDAN
Mammalian Cell Selection:	Neomycin
Vector:	pCMV6-Entry (PS100001)
E. coli Selection:	Kanamycin (25 ug/mL)



[View online »](#)

ORF Nucleotide Sequence:

>RC205246 ORF sequence
 Red=Cloning site Blue=ORF Green=Tags(s)

TTTTGTAATACGACTCACTATAGGGCGGCCGGAATTCGTCGACTGGATCCGGTACCGAGGAGATCTGCC
 GCC**CGCATCGCC**

ATGAGTGAGGAGAGGAGCCTTTCCTTATTGGTCAAAGCCGTGGATCCAGACACCCCAATATGATGACAG
 ATGTGGTTAAACTTCTCTGCGGTATGCATTGTAGGGGAAGAAAGCATCCTTGAAGAAGTTTTAGAAGC
 TTTAACTTCAGCTGGTGAAGAAAAAATTGACAGATTTTTTTGTATTGTGAAGGCTCCGGCACAAT
 TCAGTTCAACTGCAAGTAGCTTGTATGCAGCTCATCAATGCCCTGGTTACATCTCCTGATGATTTGGATT
 TCAGGCTTCACATCAGAAATGAATTTATGCGTTGGATTGAAAGAGATATTGCCAAATTTAAAATGCAT
 TAAGAATGATGGCCTGGATATCCAATTAAGTCTTTGATGAGCATAAAGAAGAAGATTTGTTTGGATT
 TCCCATCGCCTGAAGATATTAGAGCTGAACCTGATGAAGCATATGATGTTTACAACATGGTGTGGAGCA
 CAGTTAAAGAACTAGAGCAGAGGGATTTTTATTCTATTCTTCAGCATCTGTTGCTGATTCGAAATGA
 TTATTTTATAAGGCAACAATACTTCAAATTAATTGATGAGTGTGTATCCCAGATTGATTGCATAGAGAT
 GGAATGGATCCAGACTTCACATATCGAAAAAGACTAGATTTAGATTTAACCCAGTTTGTAGACATTTGCA
 TAGATCAAGCAAACTAGAAGAGTTTGAAGAGAAAGCATCAGAATTTACAAGAAATTTGAAAAAGATT
 TACCGACCACCAAGAACTCAGGCTGAATTGCAGAAAAAGAGGCAAAGATTAATGAGCTCAAGCAGAG
 CTAACAAGCTTTAAGTCTCAGTTTGGTGCCTTGCAGCTGATTGTAATATTCCTTGCCTCCCTCTAAAG
 AAGGTGGAAGTGGCCACTCAGCACTTCTCCTCCGCTCCACTGCCTTCTGGTGGAGGGGTGCCGCTCC
 ACCTCTCCCCACCCTCCTCACTTCCAGGAATGCGGATGCCATTGAGTGGTCTGTGCTCCACCA
 CCTCCCCTGGGATTCCTGGAGGACAAAATTCCTCCTCTACCAATCCTGCCATTTGGTTGAAACCAA
 AGAAAGAATTTAAACCTGAAATCAGCATGAGAAGATTGAATTTGGTTAAAGATCAGACCTCATGAAATGAC
 TGAAAACTGTTTCTGGATAAAAAGTAAATGAAAATAGTATGAAAACGTGGATTTGCTTTGTAACCTTGAG
 AATACATTTTGTGCAACAAAAAGAGAGAAGAGAAGAGGAAGATATTGAAGAGAAGAAATCGATTAAGA
 AAAAAATTAAGAACTTAAGTTTTAGATTCTAAAATGCCCAGAACCTTTCAATCTTCTGAGCTCTTT
 TCGGGTGCATATGAGGAAATCAGAATGATGATATTGGAAGTAGATGAAACACGGTTGGCAGAGTCTATG
 ATTCAGAACTTAATAAGCATCTTCTGATCAAGAGCAATTAATTCATTGTCTCAGTTCAGAGTGAAT
 ATAGCAACTTATGTGAACCTGAGCAGTTTGTGGTTGTGATGAGCAATGTGAAGAGACTACGGCCACGGCT
 CAGTGCTATTCTTTAAGCTTCAGTTTGAAGAGCAGGTGAACAACATCAAACCTGACATCATGGCTGTC
 AGTACTGCTGCGAAGAGATAAAGAAGAGCAAAAGCTTTAGCAAGTTGCTGGAACCTGTATTGCTAATGG
 GAAACTACATGAATGCTGGCTCCCGAATGCTCAAACCTTCGGATTTAACCTTAGCTCTCTGTAAACT
 AAAGGACACAAAATCAGCAGATCAGAAAAACAACGCTACTTCAATTCCTGGTAGAAATATGTGAAGAGAAG
 TACCCTGATATACTGAATTTTGTGGATGATTTGGAACCTTTAGACAAAGCTAGTAAAGTCTCTGTAGAAA
 CGCTGGAAAAGAAATTTGAGGCAGATGGGAAGGCAGCTTCAACAGCTTGAGAAGGAATTTGAAACCTTTCC
 CCCTCCTGAGGACTTGCATGACAAGTTTGTGACAAAGATGTCCAGATTTGTTATCAGTGCAAAAGAACAA
 TATGAGACACTTTCGAAGTTACACGAAAACATGGAAAAGTTATACCAGAGTATAATAGGATACTATGCCA
 TTGATGTGAAGAAGGTGTCTGTGGAAGACTTTCTTACTGACCTGAATAACTTCAGAACCACATTCATGCA
 AGCAATAAAGGAGAATATCAAAAAAGAGAAGCAGAGGAAAAAGAAAAACGTGTCAGAATAGCTAAAGAA
 TTAGCAGAGCGAGAAAGACTCGAACGCCAACAAAAGAAAAAGCGTTTATTAGAAATGAAGACTGAGGGTG
 ATGAGACAGGAGTGATGGATAATCTGCTGGAGGCTTGCAGTCCGGGGCTGCCTTCCGCGACAGAAGAAA
 AAGGACACCGATGCCAAAAGATGTTGCGCAGAGTCTCAGTCCAATGTCTCAGAGGCTGTTCTGAAAGTT
 TGAACCATGGTAATAAACCGTATTTA

ACGCGTACGCGGCCGCTCGAGCAGAACTCATCTCAGAAGAGGATCTGGCAGCAATGATATCCTGGATT
 ACAAGGATGACGACGATAAGGTTTAA

Protein Sequence: >RC205246 protein sequence
 Red=Cloning site Green=Tags(s)

MSEERSLSLLVKAVDPRHPNMMDVVKLLSAVCIVGEEISILEEVLEALTSAGEEKKIDRFFCIVEGLRHN
 SVQLQVACMQLINALVTPDDLDFRLHIRNEFMRCGLKEILPNLKCIKNDGLDIQLKVFDEHKEEDL FEL
 SHRLEDIRAELDEAYDVNMMVWSTVKETRAEGYFISILQHLLLRNDYFIRQQYFKLIDECVSVQIVLHRD
 GMDPDFTYRKRDLDLTQFVDICIDQAKLEEFEEKASELYKKFEKEFTDHQETAELQKKEAKINELQAE
 LQAFKSGFALPADCNIPLPPSKEGGTGHSA LPPPPPLPSGGGVPPPPPPPPPPPLPGMRMPFSGPVPPP
 PPLGFLGGQNSPPLPILPFLPKPKKEFKPEISMRRLNWLKIRPHEMTEFCWIKVNNENKYENVDLLCKLE
 NTFCCQKERREEEDIEEKSIKKIKELKFLDSKIAQNL SIFLSSFRVPYEEIRMMILEVDETRLAESM
 IQNLIKHLPDQEQNLNSLQFKSEYNLCEPEQFVVMSNVKRLRPRLSAILFKLQFEEQVNNIKPDIMAV
 STACEEIKKSKSFSKLELVLMLGNYMAGSRNAQTFFGNLSSLCKLKDTSADQKTTLLHFLVEICEEK
 YPDILNFVDDLEPLDKASKVSVETLEKNLRQMGRQLQLEKELETFPPPEDLHDKFVTKMSRFVISAKEQ
 YETLSKLENMEKLYQSIIGYYAIDVKKVSVEDFLTDLNFRFTTFMQAIKENIKKREAEKEKRVRIAKE
 LAERERLERQKKRLLLEMKTEGDETGVMNLLLEALQSGAAFDRRRKRTMPKDVRSLSLSPMSQRPVLKV
 CNHGNKPYL

TRTRPLEQKLISEEDLAANDILDYKDDDDKV

Chromatograms: https://cdn.origene.com/chromatograms/mk6542_d04.zip

Restriction Sites: SgfI-MluI

Cloning Scheme:

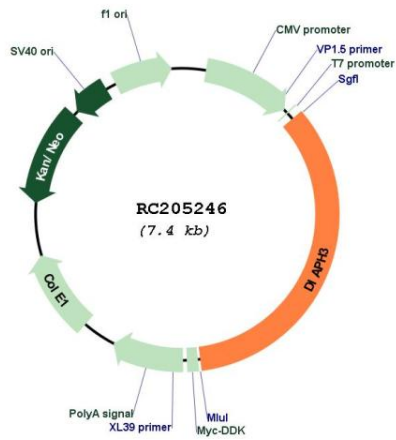
Cloning sites used for ORF Shuttling:



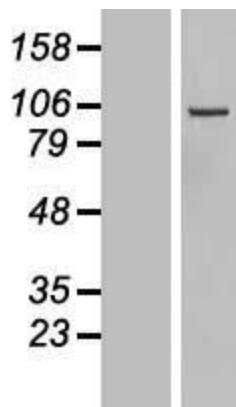
* The last codon before the Stop codon of the ORF

ACCN:	NM_030932
ORF Size:	2547 bp
OTI Disclaimer:	The molecular sequence of this clone aligns with the gene accession number as a point of reference only. However, individual transcript sequences of the same gene can differ through naturally occurring variations (e.g. polymorphisms), each with its own valid existence. This clone is substantially in agreement with the reference, but a complete review of all prevailing variants is recommended prior to use. More info
OTI Annotation:	This clone was engineered to express the complete ORF with an expression tag. Expression varies depending on the nature of the gene.
Components:	The ORF clone is ion-exchange column purified and shipped in a 2D barcoded Matrix tube containing 10ug of transfection-ready, dried plasmid DNA (reconstitute with 100 ul of water).
Reconstitution Method:	<ol style="list-style-type: none">1. Centrifuge at 5,000xg for 5min.2. Carefully open the tube and add 100ul of sterile water to dissolve the DNA.3. Close the tube and incubate for 10 minutes at room temperature.4. Briefly vortex the tube and then do a quick spin (less than 5000xg) to concentrate the liquid at the bottom.5. Store the suspended plasmid at -20°C. The DNA is stable for at least one year from date of shipping when stored at -20°C.
RefSeq:	NM_030932.3 , NP_112194.2
RefSeq Size:	2745 bp
RefSeq ORF:	2550 bp
Locus ID:	81624
UniProt ID:	Q9NSV4
Cytogenetics:	13q21.2
Protein Pathways:	Regulation of actin cytoskeleton
MW:	98.2 kDa
Gene Summary:	This gene encodes a member of the diaphanous subfamily of the formin family. Members of this family are involved in actin remodeling and regulate cell movement and adhesion. Mutations in this gene are associated with autosomal dominant auditory neuropathy 1. Multiple transcript variants encoding different isoforms have been found for this gene. [provided by RefSeq, Apr 2012]

Product images:



Circular map for RC205246



Western blot validation of overexpression lysate (Cat# [LY410648]) using anti-DDK antibody (Cat# [TA50011-100]). Left: Cell lysates from untransfected HEK293T cells; Right: Cell lysates from HEK293T cells transfected with RC205246 using transfection reagent MegaTran 2.0 (Cat# [TT210002]).