

Product datasheet for **RC205244**

ELF2 (NM_006874) Human Tagged ORF Clone

Product data:

Product Type:	Expression Plasmids
Product Name:	ELF2 (NM_006874) Human Tagged ORF Clone
Tag:	Myc-DDK
Symbol:	ELF2
Synonyms:	b; EU32; NERF; NERF-1A; NERF-1a; NERF-1B; NERF-2
Mammalian Cell Selection:	Neomycin
Vector:	pCMV6-Entry (PS100001)
E. coli Selection:	Kanamycin (25 ug/mL)



[View online »](#)

ORF Nucleotide
Sequence:

>RC205244 ORF sequence
Red=Cloning site Blue=ORF Green=Tags(s)

TTTTGTAATACGACTCACTATAGGGCGGCCGGAATTCGTCGACTGGATCCGGTACCGAGGAGATCTGCC
GCCGCGATCGCC

ATGGCGACGTCTCTGCATGAGGGACCCACGAACCAGCTGGATCTGCTCATCCGGCCGTGGAAGCATCAG
TTCACAGCAGTAATGCACACTGTACAGATAAGACAATTGAAGCTGCTGAAGCCCTGCTTCATATGGAATC
TCCTACCTGCTTGAGGGATTCAAGAAGTCTGTGGAAGTGTGTTGTTCTCCTGTGTATCAACTCCAGAA
TTCATCCATGCTGCTATGAGGCCAGATGTCATTACAGAACTGTAGTGGAGGTGTCAACTGAAGAGTCTG
AACCCATGGATACCTCTCTATTCCAACATCACCAGATAGCCATGAACCAATGAAAAAGAAAAAGTTGG
CCGTAACCAAAGACCCAGCAATCACCATTTCATGGGTCTCCTGAGTTAGGTATAAAGAAGAAACCA
AGAGAAGGAAAAGGAAACACAACCTATTTGTGGGAGTTTCTTTTAGATCTACTTCAAGATAAAAACTT
GTCCCAGGTATATTAATGGACTCAGAGAGAAAAAGGCATATTCAAGCTGGTGGATTCAAAGGCTGTCTC
TAAGCTTTGGGAAAGCATAAGAACAACCCAGACATGAACTATGAAACCATGGGACGAGCTTTGAGATAC
TACTACCAAAGGGGAATTCCTGCAAAGGTTGAAGGACAGAGGCTTGATATCAGTTCAAGGATATGCCGA
AAAACATAGTGGTCATAGATGATGACAAAAGTGAACCTGTAATGAAGATTTAGCAGGAAGTACTGATGA
AAAATCATTAGAACGAGTGTCACTGTCTGCAGAAAGTCTCCTGAAAGCAGCATCCTCTGTTGCGAGTGG
AAAAATTCATCCCTATAAACTGCTCCAGAGCAGAGAAGGGTGTAGTAGAGTTGTGAATACACTTCCC
CTGGGCACGATGCTTCATCCAGGTCTCCTACTACCAGTGCATCTGTGTGAGCAACAGCAGCTCCAAGGAC
AGTTCGTGTGGCAATGCAGGTACCTGTTGTAATGACATCATTGGGTCAGAAAAATTCAACTGTGGCAGTT
CAGTCAGTTAATGCAGGTGCACCATTAAACCAGCACTAGTCCAACAACAGCAGCTCTCCAAAGGTAG
TCATTGAGACAATCCCTACTGTGATGCCAGCTTCTACTGAAAAATGGAGACAAAATCACCATGCAGCTGC
CAAAATTATTACCATCCCAGCTACACAGCTTGACAGTGTCAACTGCAGACAAAGTCAAATCTGACTGGA
TCAGGAAGCATTAACTGTTGGAACCCATTGGCTGTGAGAGCACTTACCCCTGTTTCAATAGCCCATG
GTACACCTGTAATGAGACTATCAATGCCTACTCAGCAGGCATCTGGCCAGACTCCTCCTCGAGTTATCAG
TGCAGTCATAAAGGGGCCAGAGTTAAATCGGAAGCAGTGGCAAAAAAGCAAGAACATGATGTGAAAAC
TTGCAGCTAGTAGAAGAAAAACCAGCAGATGGAATAAAGACAGTGACCCACGTAGTGGTTGTGAGTGC
CTTCAGCTATTGCCCTTCTGTAATGAAAACAGAAGGACTAGTGACATGTGAGAAA

ACGCGTACGCGGCCGCTCGAGCAGAACTCATCTCAGAAGAGGATCTGGCAGCAAATGATATCCTGGATT
ACAAGGATGACGACGATAAGGTTTAA

Protein Sequence:

>RC205244 protein sequence
Red=Cloning site Green=Tags(s)

MATSLHEGPTNQLDLLIRAVEASVHSSNAHCTDKTIEAAEALLHMESPTCLRDSRSPVEVFVPPCVSTPE
FIHAAMRPDVITETVVEVSTEESEPMDTSP IPTSPDSHEPMKKKVVGRPKTQQSPI SNGSPELGIKKKP
REGKGNNTYLWEFLDLLQDKNTCPRYIKWTQREKGFKLVDSKAVSKLWGKHKNKPDMMNYETMGRALRY
YYQRGILAKVEGQRLVYQFKDMPKNIIVIDDDKSETCNEDLAGTTDEKSLERVSLSAESLLKAASSVRS
KNSSPINCRAEKGVARVNVITSPGHDASSRPTTTASVSATAAPRTVRVAMQVPVVMVMTSLGQKISTVAV
QSVNAGAPLITSTPTTATSPKVVIQTIPTVMPASTENGDKITMQPAKIIITIPATQLAQCLQTKSNLTG
SGSINIVGTPLAVRALTPVSI AHGTPVMRLSMPTQQASGQTPPRVISA VIKGPEVKSEAVAKKQEHVKT
LQLVEEKPADGNKTVTHVVVVSAPSAIALPVTMKTGLVTEK

TRTRPLEQKLI SEEDLAANDILDYKDDDDKV

Chromatograms:

https://cdn.origene.com/chromatograms/mk6286_f04.zip

Restriction Sites:

Sgfl-MluI

Cloning Scheme:


ACCN: NM_006874

ORF Size: 1599 bp

OTI Disclaimer: The molecular sequence of this clone aligns with the gene accession number as a point of reference only. However, individual transcript sequences of the same gene can differ through naturally occurring variations (e.g. polymorphisms), each with its own valid existence. This clone is substantially in agreement with the reference, but a complete review of all prevailing variants is recommended prior to use. [More info](#)

OTI Annotation: This clone was engineered to express the complete ORF with an expression tag. Expression varies depending on the nature of the gene.

Components: The ORF clone is ion-exchange column purified and shipped in a 2D barcoded Matrix tube containing 10ug of transfection-ready, dried plasmid DNA (reconstitute with 100 ul of water).

- Reconstitution Method:**
1. Centrifuge at 5,000xg for 5min.
 2. Carefully open the tube and add 100ul of sterile water to dissolve the DNA.
 3. Close the tube and incubate for 10 minutes at room temperature.
 4. Briefly vortex the tube and then do a quick spin (less than 5000xg) to concentrate the liquid at the bottom.
 5. Store the suspended plasmid at -20°C. The DNA is stable for at least one year from date of shipping when stored at -20°C.

RefSeq: [NM_006874.4](#)

RefSeq Size: 3092 bp

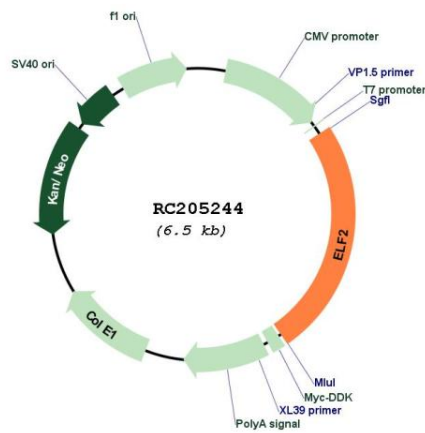
RefSeq ORF: 1602 bp

Locus ID: 1998

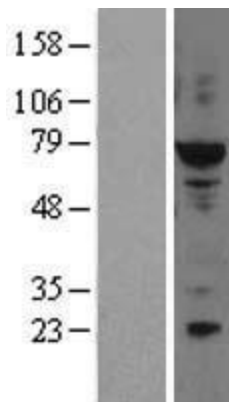
UniProt ID: [Q15723](#)

Cytogenetics: 4q31.1

Domains: ETS
Protein Families: Druggable Genome, Transcription Factors
MW: 57.4 kDa
Gene Summary: Isoform 1 transcriptionally activates the LYN and BLK promoters and acts synergistically with RUNX1 to transactivate the BLK promoter.[UniProtKB/Swiss-Prot Function]

Product images:


Circular map for RC205244



Western blot validation of overexpression lysate (Cat# [LY416354]) using anti-DDK antibody (Cat# [TA50011-100]). Left: Cell lysates from untransfected HEK293T cells; Right: Cell lysates from HEK293T cells transfected with RC205244 using transfection reagent MegaTran 2.0 (Cat# [TT210002]).