

## Product datasheet for **RC205232**

### **ENOX1 (NM\_017993) Human Tagged ORF Clone**

#### **Product data:**

Product Type:	Expression Plasmids
Product Name:	ENOX1 (NM_017993) Human Tagged ORF Clone
Tag:	Myc-DDK
Symbol:	ENOX1
Synonyms:	bA64J21.1; cCNOX; CNOX; PIG38
Mammalian Cell Selection:	Neomycin
Vector:	pCMV6-Entry (PS100001)
E. coli Selection:	Kanamycin (25 ug/mL)



[View online »](#)

ORF Nucleotide  
Sequence:

>RC205232 ORF sequence  
Red=Cloning site Blue=ORF Green=Tags(s)

TTTTGTAATACGACTCACTATAGGGCGGCCGGAATTCGTCGACTGGATCCGGTACCGAGGAGATCTGCC  
GCC**CGGATCGCC**

ATGGTAGATGCAGGTGGAGTTGAGAACATCACCCAGCTTCCCAGGAGCTTCCCTCAGATGATGGCTGCAG  
CAGCCGATGGTTTGGGGAGTATAGCGATAGACACGACCCAGCTCAACATGTCCGTGACAGATCCCACAGC  
CTGGGCTACAGCCATGAATAACCTGGGCATGGTCCCCTAGGGTTGCCTGGACAGCAGCTCGTGTCTGAC  
TCAATCTGTGTCCAGGCTTTGATCCAAGCCTCAACATGATGACTGGAATCACCCCCATTAACCCAAATGA  
TACCAGGCCTTGGACTGGTACCTCCCCACCACCAACAGAAGTGGCTGTTGTCAAAGAAAATATCCACTG  
CAAAAGCTGTACTCTTTTTCTCAAATCCAAATCTTCCACCTCCTTCCACAAGAGAACGACCTCCTGGG  
TGTAAGACCGTGTGTGCGGAGGATTACCAGAAAATGCTACTGAGGAAAATTTTCAAGAAGTCTTTGAAC  
AGTGCGGTGATATTACAGCAATTCGAAAAGCAAGAAGAATTTTGTACATTGCTTTGCAGAGGAATT  
CATGGTTGATAAAGCCATTTACCTTTCTGGTTATAGGATGCGATTAGGGTCTAGCACCGACAAAAAGGAT  
TCAGGCCGCCCTTCAATGTGGACTTTGCCAGGCCAGGGATGACTTCTATGAGTGGGAATGCAAGCAGAGGA  
TGGCTGCCCGGGAGGAGCGGCACCGGCGCAAGCTGGAGGAGGACCGGCTCAGGCCCCATCCCCGCCTGC  
CATAATGCACTACTCGGAGCACGAAGCCGCTCTGCTGGCTGAAAAGCTGAAAAGATGATAGCAAGTTTTCA  
GAGGCTATCACAGTGTGCTTTCTGGATTGAACGAGGGGAAGTGAATCGGCGCTCTGCAAACCAGTTCT  
ATTCATGGTGCAGTCGGCCAACAGCCACGTCCGCCGGCTAATGAATGAAAAAGCCACCCATGAGCAAGA  
GATGGAGGAAGCCAAGGAGAATTTAAAAATGCCTTAAGTGGGATTCTCACTCAATTTGAGCAGATTGTG  
GCCGTTTTCAACGCTTCTACCAGACAAAAGCTTGGGACCATTTCTCGAAAGCCCAGCGCAAGAACATAG  
ACATTTGGCGAAAGCATTCTGAGGAGCTCCGGAATGCTCAAAGTGAAGCAGCTCATGGGCATCCGCCGCGA  
AGAAGAAAATGAAAATGTCTGATGATGAGAACTGTGACAGCCCTACAAAGAAAATGAGAGTCGATGAATCA  
GCCCTGGCTGCCAGGCCTACGCTCTGAAAGAGGAGAATGACAGTCTCCGCTGGCAGCTGGATGCCTACA  
GGAATGAGGTGGAGCTGCTGAAACAAGAAAAAGAACAGCTTTTCCGAACAGAAGAAAACCTCACCAAGGA  
CCAGCAACTGCAGTTTCTGCAGCAAACCATGCAAGGCATGCAGCAGCAATTGCTAACCATCCAGGAGGAG  
TTAAACAACAAAAGTCAAGATTGGAACAAGCAAAGGAGCAGTCCCATACACAAGCGTTACTAAAAG  
TCCTGCAGGAACAATTAAGGTACCAAGGAATTGGTCGAGACCAATGGCCACAGCCATGAGGATTCAAA  
TGAATCAATGTGTTGACAGTTGCATTAGTCAACCAAGACCGAGAGAACAATATTGAGAAAAGAAGCCAA  
GGCTTAAATCAGAGAAAGAAGCTCTGCTAATAGGTATCATATCAACGTTTCTTACGTCCATCCTTTTG  
GAGCCAACATAGAATATCTTTGGTCATACATGCAGCAGCTGGACTCCAAGATATCTGCAAATGAAATAGA  
AATGCTTTTGATGAGGCTGCCACGCATGTTCAAACAGGAATTCACGGGTGTGGGAGCCACGCTGGAAAAA  
AGATGGAAGTTGTGTGCCTTTGAAGGAATTAAGTACC

**ACGCGT**ACGCGGCCGCTCGAGCAGAAACTCATCTCAGAAGAGGATCTGGCAGCAAATGATATCCTGGATT  
ACAAGGATGACGACGATAAGGTTTAA

**Protein Sequence:** >RC205232 protein sequence  
Red=Cloning site Green=Tags(s)

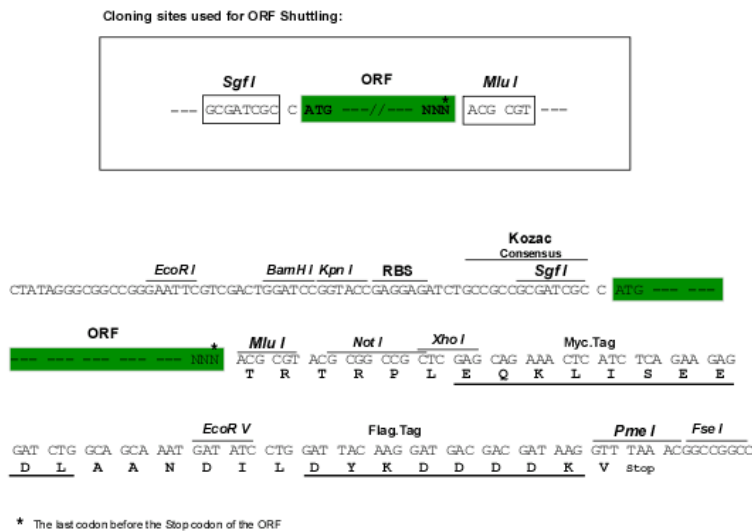
MVDAGGVENITQLPQELPQMMAAADGLGSIADITTTQLNMSVTDPTAWATAMNNLGMVPVGLPGQQLVSD  
 SICVPGFDP SLNMMTGITPINMIPGLGLVPPPPPTEVAVVKEI IHCKSCTLFPQNP LPPPSTRERPPG  
 CKTVFVGLPENATEEIIQEVEFQCGDITAIRKSKNFCHIRFAEEFMVDKAIYLSGYRMRLGSSTDKK  
 SGRLHVDFAQARDDFYEW ECKQRM RAREERHRRKLEEDRLRPPSPPAIMHYSEHEAALLAEKLDKDSKFS  
 EAITVLLSWIERGEVNR SANQFY SMVQS ANSHVRR LMNEKATHEQE MEEAKENFKNALTGILTQFEQIV  
 AVFNASTRQKAWDHF SQAQRKNIDIWRKHSEELRNAQSEQLMGIRREEEMEMSDDENCDSP TKMRVDES  
 ALAAQAYALKEENDSLRWQLDAYRNEVELL KQEKEQLFRTEENLTKDQQLQFLQQT MQGMQQQLLTIQEE  
 LNNKSELEQAKEEQSHTQALLKVLQEQLKGT KELVETNGHSHEDSNEINVL TVALVNQDRENNIEKRSQ  
 GLKSEKEALLIGIISTFLHVHPFGANIEYLWSYMQQLDSKISANEIEMLLMRLPRMFKEFTGVGATLEK  
 RWKLCAFEGIKTT

TRTRPLEQKLISEEDLAANDILDYKDDDDKV

**Chromatograms:** [https://cdn.origene.com/chromatograms/mk6196\\_b07.zip](https://cdn.origene.com/chromatograms/mk6196_b07.zip)

**Restriction Sites:** SgfI-MluI

**Cloning Scheme:**



**ACCN:** NM\_017993

**ORF Size:** 1929 bp

**OTI Disclaimer:** The molecular sequence of this clone aligns with the gene accession number as a point of reference only. However, individual transcript sequences of the same gene can differ through naturally occurring variations (e.g. polymorphisms), each with its own valid existence. This clone is substantially in agreement with the reference, but a complete review of all prevailing variants is recommended prior to use. [More info](#)

**OTI Annotation:** This clone was engineered to express the complete ORF with an expression tag. Expression varies depending on the nature of the gene.

**Components:** The ORF clone is ion-exchange column purified and shipped in a 2D barcoded Matrix tube containing 10ug of transfection-ready, dried plasmid DNA (reconstitute with 100 ul of water).

**Reconstitution Method:**

1. Centrifuge at 5,000xg for 5min.
2. Carefully open the tube and add 100ul of sterile water to dissolve the DNA.
3. Close the tube and incubate for 10 minutes at room temperature.
4. Briefly vortex the tube and then do a quick spin (less than 5000xg) to concentrate the liquid at the bottom.
5. Store the suspended plasmid at -20°C. The DNA is stable for at least one year from date of shipping when stored at -20°C.

**RefSeq:** [NM\\_017993.5](#)

**RefSeq Size:** 3047 bp

**RefSeq ORF:** 1932 bp

**Locus ID:** 55068

**UniProt ID:** [Q8TC92](#)

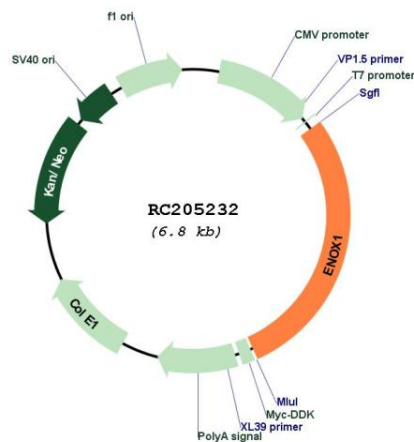
**Cytogenetics:** 13q14.11

**Domains:** RRM

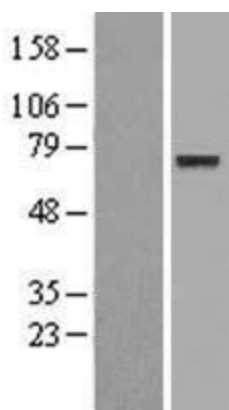
**MW:** 73.3 kDa

**Gene Summary:** The protein encoded by this gene is involved in plasma membrane electron transport pathways. The encoded protein has both a hydroquinone (NADH) oxidase activity and a protein disulfide-thiol interchange activity. The two activities cycle with a periodicity of 24 minutes, with one activity being at its peak when the other is at its lowest. [provided by RefSeq, Dec 2016]

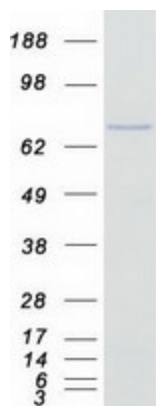
### Product images:



Circular map for RC205232



Western blot validation of overexpression lysate (Cat# [LY426824]) using anti-DDK antibody (Cat# [TA50011-100]). Left: Cell lysates from untransfected HEK293T cells; Right: Cell lysates from HEK293T cells transfected with [RC226055] using transfection reagent MegaTran 2.0 (Cat# [TT210002]).



Coomassie blue staining of purified Enox1 protein (Cat# [TP305232]). The protein was produced from HEK293T cells transfected with Enox1 cDNA clone (Cat# RC205232) using MegaTran 2.0 (Cat# [TT210002]).