

Product datasheet for **RC205229**

ZNF334 (NM_199441) Human Tagged ORF Clone

Product data:

Product Type:	Expression Plasmids
Product Name:	ZNF334 (NM_199441) Human Tagged ORF Clone
Tag:	Myc-DDK
Symbol:	ZNF334
Mammalian Cell Selection:	Neomycin
Vector:	pCMV6-Entry (PS100001)
E. coli Selection:	Kanamycin (25 ug/mL)



[View online »](#)

ORF Nucleotide
Sequence:

>RC205229 ORF sequence
Red=Cloning site Blue=ORF Green=Tags(s)

TTTTGTAATACGACTCACTATAGGGCGGCCGGAATTCGTCGACTGGATCCGGTACCGAGGAGATCTGCC
GCC**CGCATCGCC**

ATGCTGGAGAACTACAGCAACTTGGTCTCTGTGGGTATCATGTTAGCAAACCAGATGTGATTTTCAAAT
TGGAGCAAGGAGAAGAGCCATGGATAGTGGAGGAATTCTCAAATCAGAACTACCCAGACATTGATGATGC
CTTAGAGAAGAACAAGGAAATCCAAGATAAACATTTGACACAACTGTATTCTTCAGCAACAAAACACTG
ATTACAGAAAGAGAGAATGTATTTGGGAAAACCTTAATCTGGGCATGAATAGTGTTCCTCAAGAAAA
TGCCCTATAAATGTAATCCAGGAGGAAACAGTTTGAAAACCTAATTCAGAAGTAATGTTGCCAAAGAAAA
CAAAGAAAACAGAAAGATTCCTGATGGATACAGTGGATTTGGGAAGCATGAGAAAAGTCATTTGGGAATG
AAAAAATACAGATACAATCCAATGAGGAAAGCCAGCAATCAAACGAAAACTTATTCTGCACCAGAAC
TTCAGATTTTGAACAACCGTTTGACTATAATAATGTGGGAAAACCTTCTTCAAGAGGGCAATTCTCAT
TACACAAAAGGGGAGACAGACTGAAAGGAAACCAATGAATGTAATGAATGTAGGAAAACCTTTTCTAAG
AGATCTACCTCATTGTACATCAGAGAATTCATACAGGGGAGAAAACCGTATGTTTGTAGTGATTGTAGGA
AACTTTTCTGTGTGAAGACAAGCCTCACTCGACACCGAAGAATTCATACTGGAGAGAGACCTATGAATG
CAGTGAATGCAGGAAAACCTTATTGACAAATCTGCCCTTATTGTACACCAGAAAATTCATGGAGGGGAG
AAATCCTATGAGTGAATGAATGTGGAAAGACCTTTTTTCGGAAGTCAGCCCTGGCTGAACATTTACGGT
CACACACAGGGGAGAAGCCTTACGAATGCAAGGAATGTGGAAATGCCTTCAGCAAGAAAATCGTATCTTGT
TGTACATCAAAGAACTCACAGAGGAGAGAAGCCAAATGAATGAAGGAATGTGGGAAAACCTTCTTCTGT
CAGTCAGCCCTTACTGCGCATCAGAGAATTCACACAGGGGAAAAACCTATGAATGTAGTGAATGTGAGA
AAACCTTCTTTTGTCAATCTGCCCTCAATGTGCATCGAAGAAGTCATACAGGAGAGAAGCCCTATGAATG
CAGTCAATGTGGAAAATTTTTATGTACGAAATCAGCCCTCATTGCACATCAGATAACTCATAGAGGAAAG
AAGTCTTATGAATGAATGAATGTGGGAAATTTTTCTGCCATAAGTCAACACTCACTATACATCAGAGAA
CACACACAGGAGAGAAACATGGTGTGTTAATAAATGTGGTAGAATCTCCATTGTGAAGTCAAACCTGCAG
TCAGTGTAAAGAGAATGAACACAAAGGAGAATCTTTATGAGTGTAGTGAACATGGGCATGCCGTGAGAAA
AACTCACACCTCATTGTACATCAGAGAATATATGGGAGAGACCATATGAATGCAATGAATGTGGGAGAA
CCTACTGCAGGAAGTCAGCCCTGACTCACCATCAGAGAACACACAGGACAGAGACCCTATGAGTGTA
TGAATGTGGGAAAACCTTCTGTCAGAAGTCTCCTTTGTTGAACATCAGCGAACTCACACTGGGGAGGAA
CCATATGAATGAATGAATGTGGGAAATCCTTCTGCCATAAGTCAGCCTCAGAGTCCATAGAAGAATTC
ACACAGGAGAGAAAACATATGAATGTAATCAATGTGGGAAAACCTACCGTCGCCTGTGGACTCTCACTGA
ACATCAGAAAATACACACAGGAGAGAAAACCTTATGAATGTAACAAATGTGAGAAAACATTTGCAACAAA
TCAAACCTTCTTTTACATCAGAAATCCACAAGGAA

ACGCGTACGCGGCCGCTCGAGCAGAAACTCATCTCAGAAGAGGATCTGGCAGCAAATGATATCCTGGATT
ACAAGGATGACGACGATAAGGTTTAA

Protein Sequence: >RC205229 protein sequence
Red=Cloning site Green=Tags(s)

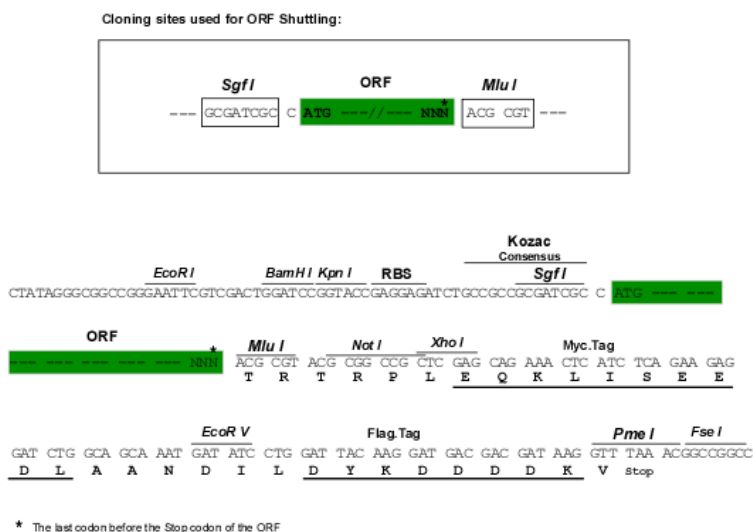
MLENYSNLVSVGYHVSKPDVIFKLEQGEEPWIVEEF SNQNPDIIDDALEKNKEIQDKHLTQTVFFSNKTL
ITERENVFGKTLNLGMNSVPSRKMPYKCNPGNSLKTNSEVIVAKKSKENRKIPDGYSGFGKHEKSHLGM
KKYRYNPMRKASNQENLILHQNIQILKQPFDYKCGKTFKRAILITQKGRQTERKPNECNECRKTF SK
RSTLIVHQRIHTGEKPYVCSDCRKTFRVKTSLTRHRIHTGERPYECSECRKTFIDKSALIVHQIHGGE
KSYECNECGKTFFRKSALAEHFRSHTGEKPYECKEGNAFSKSYLVVHQRTHRGEKPNCKECCGKTF FC
QSALTAHQRIHTGEKPYECSECEKTFFCQSALNVHRSHTGEKPYECSQCGKFLCTKSALIAHQITHRGK
KSYECNECGKFFCHKSTLTIHQRTHTGEKHGVFNKCGRISIVKSNCQCKRMNTKENLYECSEHGHA VSK
NSHLIVHQRTIWERPYECNECGRTYCRKSALTHHQRTHTGQRPYECNECGKTF CQKFSFVEHQRTHTGEE
PYECNECGKSFCHKSAFRVHRIHTGEKQYECNQCGKTYRRLWLTTEHQKIHTGEKPYECNKCEKTFRNK
SNFLLHQKSHKE

TRTRPLEQKLISEEDLAANDILDYKDDDDKV

Chromatograms: https://cdn.origene.com/chromatograms/mk6542_f09.zip

Restriction Sites: SgfI-MluI

Cloning Scheme:



ACCN: NM_199441

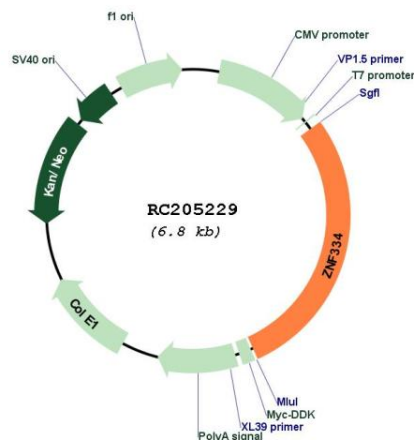
ORF Size: 1926 bp

OTI Disclaimer: The molecular sequence of this clone aligns with the gene accession number as a point of reference only. However, individual transcript sequences of the same gene can differ through naturally occurring variations (e.g. polymorphisms), each with its own valid existence. This clone is substantially in agreement with the reference, but a complete review of all prevailing variants is recommended prior to use. [More info](#)

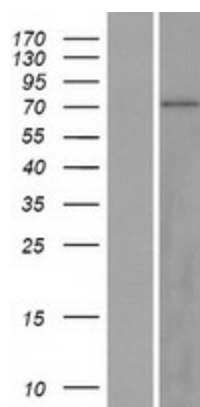
OTI Annotation: This clone was engineered to express the complete ORF with an expression tag. Expression varies depending on the nature of the gene.

Components:	The ORF clone is ion-exchange column purified and shipped in a 2D barcoded Matrix tube containing 10ug of transfection-ready, dried plasmid DNA (reconstitute with 100 ul of water).
Reconstitution Method:	<ol style="list-style-type: none">1. Centrifuge at 5,000xg for 5min.2. Carefully open the tube and add 100ul of sterile water to dissolve the DNA.3. Close the tube and incubate for 10 minutes at room temperature.4. Briefly vortex the tube and then do a quick spin (less than 5000xg) to concentrate the liquid at the bottom.5. Store the suspended plasmid at -20°C. The DNA is stable for at least one year from date of shipping when stored at -20°C.
RefSeq:	<u>NM_199441.1, NP_955473.1</u>
RefSeq Size:	4932 bp
RefSeq ORF:	1929 bp
Locus ID:	55713
Cytogenetics:	20q13.12
Protein Families:	Transcription Factors
MW:	75 kDa
Gene Summary:	This gene encodes a member of the C2H2 zinc finger family. The encoded protein contains a Krueppel-associated box, fourteen C2H2 zinc finger domains, and four C2H2-type/integrase DNA-binding domains. Decreased expression of this gene may be a marker for rheumatoid arthritis. Alternative splicing results in multiple transcript variants that encode different protein isoforms. [provided by RefSeq, Jul 2012]

Product images:



Circular map for RC205229



Western blot validation of overexpression lysate (Cat# [LY404565]) using anti-DDK antibody (Cat# [TA50011-100]). Left: Cell lysates from untransfected HEK293T cells; Right: Cell lysates from HEK293T cells transfected with RC205229 using transfection reagent MegaTran 2.0 (Cat# [TT210002]).