

Product datasheet for **RC205226**

CCDC87 (NM_018219) Human Tagged ORF Clone

Product data:

Product Type:	Expression Plasmids
Product Name:	CCDC87 (NM_018219) Human Tagged ORF Clone
Tag:	Myc-DDK
Symbol:	CCDC87
Mammalian Cell Selection:	Neomycin
Vector:	pCMV6-Entry (PS100001)
E. coli Selection:	Kanamycin (25 ug/mL)



[View online »](#)

ORF Nucleotide Sequence:

>RC205226 ORF sequence
 Red=Cloning site Blue=ORF Green=Tags(s)

TTTTGTAATACGACTCACTATAGGGCGGCCGGAATTCGTCGACTGGATCCGGTACCGAGGAGATCTGCC
 GCC**CGATCGCC**

ATGATGGAGCCCCGAAGCCCGAGCCTGAGCTCCAGCGTTTTACCACCGGCTGCTGCGTCCGCTGTGCG
 TCTTCCCCTAGGACGACGTCCCAGAGCCTCAGAAGCGCCCCCGCAGGAGGGCCGGATTCTGCAAGTC
 CTTCCCTCTGGCGAAGCTGACGGTGGCGTCTGTCAGCCAGGTGGCCAAAGCTGCTGGCCGCGCAGCGGG
 ATAGCAGCGGGAGTGCCTCCTGAGGCCGACTACGTCTCATCAAGGTCATCCTGGACGAGCTGAAGTGCA
 GCTGGCGGGAGCCCGCCGCAACTTAGCTGAGCCACAAAAACAACCAGAAGCTGCGGAAGCGGCTCGA
 GGCCTACGTGCTGCTGAGCAGCGAGCAGCTCTTCTTGCCTACCTGCACCTGCTGGTACCATGTCGACT
 CCCAGGGGGTCTTCACTGAATCAGCCACCCTCACCCGGTTGGCCGCGAGCTCGCCAGGGACTGCACAC
 TCTTCTTACTAGTCCCAACGTCTACCGTGGCCTGCTTGGCGACTTCCAGGCCCTGCTGAGGGCAGAGCA
 GGCTCTGGGGATGTGGACAAGCTGCACCTGTCTGCCCCGCTGGGACGTTCAAGCTGTGCCCTATCCCC
 TGGCCTCACAGCACTGGCTTAGCCCAAGTGCAGTGTCTAACCTCAACCTGAACCTACCTCATCCAACCTCA
 GCCGTCCACCAGAGTTTCTCAATGAGCCAGGAAGGATGGATCCAGTGAAGGAATTGAAGTCCATCCCTCG
 GTTGAAGAGGAAAAAGCCTTTCCACTGGCTGCCCTCCATAGGAAAAGAAGAGAAAATCGACATCAGTTCC
 TCACAGATGGTGTGCTGCCAGCTATCCTGTGGCCCCACCAGCAGGGCTTCCCCTCGCTTTCTGCC
 CTGAGCTCCGGAGAGGCCAATCCATGCCCTCCCTGCGTGGAGGGCTGGAGGCTGGCAGATGAGTTGGGCT
 TCCTCCACTCCCCTCGCCCCTAACCCCGTGGTCTTGGCTACAGAGAGCAAACCAGAGCTGACTGGG
 CTCATCGTGGCTGAGGATCTGAAGCAGTTGATAAAGAAGATGAAGTTGGAGGGGACTCGTACCCACCA
 TGGACTCAGGCCCTGCCTCCTCCTGGGGTTGTGACCCGTACCCAGCTGCAGGGCATCGCTGGAGCA
 GCTGGAGAAGATGTTGAGGAACCTCCAGGAGGAAGAAGCCTCTGGGCAGTGGGACCCCGAGCCCCCAA
 TCTTTTCACTTACCCACAGCCAGTGACCATTACTTTGAAGCTTAGAAATGAGGTGCTGGTCCAGGCGG
 CTGCCGTACGGTCTCTGATAGAAACTTCTAGACTCTTCCACATTGAGGGGGCCGAGCCCTGTATAA
 CCATCTGGCTGGTGAAGTGGATCCCAAAGCCATTGAAAAATGGATATTGATAACTTTGTTGGCAGTACT
 ACCAGGGAGGTCTACAAGGAGTTGATGAGCCATGTCTTCTGACCATTACATTTTGATCAAGGGCCCC
 TAGTTGAGCCTGCAGCAGATAAAGACTGGTCGACCTTCTGTCTCAGCCTTCTACGTCAAGAAAAACA
 GCCTCAAATCATCAACCCTGAGCTGGTTGGACTTACTCCAGAGAGCAAACACTTTACAGTCCAATACT
 AAGAAGATGCCCTCCCTCCATCACTCCAAGCTACCAAAAGCTGGGAGAAGTGGTCAAACAAGGCCTCCT
 TGATGAACTCATGAAAACACCTTGCTGTGGATGACTACTTCAAGTACCTCACCAACCATGAAACAGA
 TTTCTTTCATGTCATCTTCAAATGCATGAAGAAGAGGTTCTGTGGAGATTGTGGCCCCCTGCCAGAGAG
 TCCCTAGAGATTGAGCACCCTCCCCATTGCTAGAAGATGAAGAACCAGACTTTGTGCCAGGAGAGTGGG
 ATTGGAACACTGTGCTAGAGCACAGGCTAGGAGCTGGGAAGACACCCACCTGGGAGAACCCCAAAAAT
 TCTGAGCCTGCAGAAGCATCTGGAACAAGTGGTCTGTGCTTGGAGTCCCTGACAAGGACCAGGTGGAC
 ATGACCATTAATATAGCTCAAAGCCCGCCTGAGGCAGCTGCCTTTCATTGGTGAATGCCTGGGAGCGGG
 CCCTGAAGCCATTGAGCTGCGGGAGGCATTGCTGGCGAGACTAGAGTGGTTTGGGGACAAGCTTCCAA
 TCCCAACCGCTTCTTCAAAAAGACCAACTTGAGCTCCAGTCACTTCTGGAGGAGAATCAGGTCCGAAGC
 CATCTCCACAGGAAGCTCAACTTAATGGAGTCTTCTTTGGTTTCCCTCCTAGAGGAGATAGAGTTAATCT
 TTGGCGAGCCAGTGATCTTCAAGGGGCGGCCCTACCTGGACAAGATGAAGAGTGACAAAAGTGGAGATGCT
 CTATTGGCTGCAACAGCAGCGGGGTTTCGCCACCTGGTCTCGGCCCTGAAGGATCCCCACCAGTCAACC
 CTGTTCCAGGAGCTCAGCAGCCAGCCT

ACCGTACGCGGCCGCTCGAGCAGAACTCATCTCAGAAGAGGATCTGGCAGCAAATGATATCCTGGATT
 ACAAGGATGACGACGATAAGGTTTAA

Protein Sequence: >RC205226 protein sequence
Red=Cloning site Green=Tags(s)

MMEPPKPEPELQRFYHRLLRPLSLFPTRTTSPEPQKRPPQEGRILQSFPLAKLTVASLCSQVAKLLAGSG
IAAGVPPEARLRLIKVILDELKCSWREPPAELSLSHKNNQKLRKRLEAYVLLSSEQLFLRYLHLLVTMST
PRGVFTESATLTRLAASLARDCTLFLTSPNVYRGLLADFQALLRAEQASGDVDKLPVCPAGTFKLCPIIP
WPHSTGLAQVQCSNLLNLYLIQLSRPPEFLNEPGRMDPVKELKSIPRLKRKKPFHWLPSIGKKREIDISS
SQMVSLPSYPVAPTSRASPSFCELRGQSMPSLREGWRLADELGLPPLPSRPLTPLVLATESKPELTG
LIVAEDLKQLIKKMKLEGTRYPPPLDGLPPLGVTTRHPAAGHRLLEELEKMLRNLEEEASGQWDPQPPK
SFPLHPQPVTITLKLNEVVVQAAAVRVSDRNFLDSFHIEGAGALYNHLAGELDPKAIKMDIDNFVGST
TREVYKELMSHVSSDHLHFDQGPLEVPAADKDWSTFLSSAFLRQEKQPQIINPELVGLYSQRANTLQSNT
KKMPSLPSLQATKSWEKWSNKASLMNSWKTTLSVDDYFKYLTNHETDFLHVIFQMHEEEVPEIVAPARE
SLEIQHPPLLEDEEPDFVPGEDWNTVLEHRLGAGKTPHLGEPHKILSLQKHLEQLWSVLEVPDKDQVD
MTIKYSSKARLRQLPSLVNAWERALKPIQLREALLARLEWFEGQASNPFRFFKKTNLSSSHFLEENQVRS
HLHRKLNLMESSLVSLLEEIELIFGEPVIFKGRPYLDKMKSDKVEMLYWLQQRRVRHLVSALKDPHQST
LFRSSAASL

TRTRPLEQKLISEEDLAANDILDYKDDDDKV

Chromatograms: https://cdn.origene.com/chromatograms/mk6313_g06.zip

Restriction Sites: Sgfl-Mlul

Cloning Scheme:


ACCN: NM_018219

ORF Size: 2547 bp

OTI Disclaimer: The molecular sequence of this clone aligns with the gene accession number as a point of reference only. However, individual transcript sequences of the same gene can differ through naturally occurring variations (e.g. polymorphisms), each with its own valid existence. This clone is substantially in agreement with the reference, but a complete review of all prevailing variants is recommended prior to use. [More info](#)

OTI Annotation: This clone was engineered to express the complete ORF with an expression tag. Expression varies depending on the nature of the gene.

Components: The ORF clone is ion-exchange column purified and shipped in a 2D barcoded Matrix tube containing 10ug of transfection-ready, dried plasmid DNA (reconstitute with 100 ul of water).

Reconstitution Method:

1. Centrifuge at 5,000xg for 5min.
2. Carefully open the tube and add 100ul of sterile water to dissolve the DNA.
3. Close the tube and incubate for 10 minutes at room temperature.
4. Briefly vortex the tube and then do a quick spin (less than 5000xg) to concentrate the liquid at the bottom.
5. Store the suspended plasmid at -20°C. The DNA is stable for at least one year from date of shipping when stored at -20°C.

RefSeq: [NM_018219.3](#)

RefSeq Size: 2915 bp

RefSeq ORF: 2550 bp

Locus ID: 55231

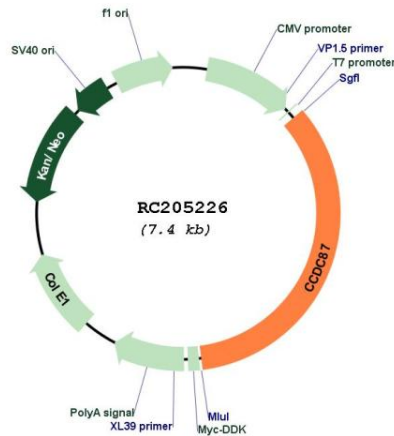
UniProt ID: [Q9NVE4](#)

Cytogenetics: 11q13.2

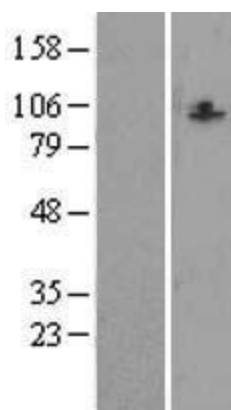
MW: 96.4 kDa

Gene Summary: Plays a role in spermatogenesis, where it is important for normal sperm head morphology. Also required for the acrosome reaction and thus normal male fertility.[UniProtKB/Swiss-Prot Function]

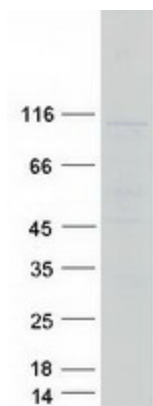
Product images:



Circular map for RC205226



Western blot validation of overexpression lysate (Cat# [LY413200]) using anti-DDK antibody (Cat# [TA50011-100]). Left: Cell lysates from untransfected HEK293T cells; Right: Cell lysates from HEK293T cells transfected with RC205226 using transfection reagent MegaTran 2.0 (Cat# [TT210002]).



Coomassie blue staining of purified CCDC87 protein (Cat# [TP305226]). The protein was produced from HEK293T cells transfected with CCDC87 cDNA clone (Cat# RC205226) using MegaTran 2.0 (Cat# [TT210002]).