

Product datasheet for **RC205222**

KLHL26 (NM_018316) Human Tagged ORF Clone

Product data:

Product Type:	Expression Plasmids
Product Name:	KLHL26 (NM_018316) Human Tagged ORF Clone
Tag:	Myc-DDK
Symbol:	KLHL26
Mammalian Cell Selection:	Neomycin
Vector:	pCMV6-Entry (PS100001)
E. coli Selection:	Kanamycin (25 ug/mL)



[View online »](#)

ORF Nucleotide Sequence:

>RC205222 ORF sequence
 Red=Cloning site Blue=ORF Green=Tags(s)

TTTTGTAATACGACTCACTATAGGGCGGCCGGAATTCGTCGACTGGATCCGGTACCGAGGAGATCTGCC
 GCC**CGGATCGCC**

ATGGCGGAGTCCGGCGGTAGCAGCGGTGGTGTGGTGGCGGGCGCTTTCGGCGGGGCCCGGGCCCCG
 AGCGCCGAACAGCACGGCCGACAAGAACGGGGCCCTCAAGTGACCTTCTCGGCACCCAGCCACAGCAC
 CAGCCTCCTGCAGGGCCTGGCCACCCTCCGCGCTCAGGGCCAGCTCCTCGATGTTGTGCTGACTATTAAC
 AGAGAGGCCTTTCCTGCACACAAGGTCTGCTGGCTGCCTGCAGCGACTACTTCAGGGCCATGTTACCCG
 GCGGCATGCGGGAGGCAAGCCAGGACGTATCGAGCTGAAGGGCGTGTGGCCCGTGGCCTGCGGCACAT
 CATCGACTTCGCCTACAGCGCCGAGGTGACACTGGACTGGACTGCGTGCAGGACGTGCTGGGCGCGCC
 GTGTTCTGCAGATGCTGCCGTGGTGGAGCTGTGCGAGGAGTTCCTGAAGGGCGCCATGAGCGTGGAGA
 CCTGCCTCAACATCGGCCAGATGGCCACCCTTCAGCCTGGCCTCGCTGCGAGAGTCCGGTGGATGCCTT
 CACCTTCCGGCACTTCTGCAGATCGCCGAGGAGGAGATTTCTGCGCCTGCCACTGGAGCGCCTGGTC
 TTCTTCTGCAGAGCAACCGGCTGCAGAGCTGTGCCGAGATCGACTGTTCCGCGCGGCCGTCGGCTGGC
 TGACGATGACCCGGCCCGCGCCGCGCCAGCCACGTGCTCTGCCACATTCGCTTCCCGCTCATGCA
 GTCGTCCGAGCTGGTGGACAGCGTGCAGACGCTGGACATCATGGTGGAGGACGTGCTGTGCCCCAGTAT
 CTGCTGGAGGCCTTCAACTACCAGTGTGCTGCCCTCCGGCAGCAGAGATGCAGTCTCCGCGCACTGCCG
 TGCGCTCGGATGTGCCCTCGCTCGTCACCTTCCGGCGCACGCCCTACACCGACAGCGACCGCTCGGTGAG
 CAGCAAGTCTACCAGTGCCTGAGCCGGGAGCCGCCACTTCCGCGAGCTCACGGAGATGGAGGTAGGC
 TGCAGCCACACGTGCGTGGCCGTGCTGGACAATTTGTGTACGTGGCCGGGGGCGAGCACCTGCAGTACC
 GCAGCGCGGAGGGCGCAGTGGACGCTGCTACCGCTACGACCCCACTGAATCGTGGCTGCCCTGCA
 GGCCATGCAGGAAAGCCGATCCAGTTCAGTGAACGTGCTGTGCGGCATGGTGTACGCCACGGGCGGC
 CGCAACCGAGCCGCGAGCCTGGCCTCCGTGGAGCGGTACTGCCCCCGGCCAATGAGTGGGGCTACGCCCT
 GCTCGTGAAGCGCCGTACCTGGGGCCATGCTGGGGCCGCTCAGGGGGCCGCTCTACATCTCGGGTGG
 CTACGGGATCTCAGTGGAGGACAAGAAGCCCTGCACTGCTACGACCCCGTGGCCGACAGTGGGAGTTC
 AAGGCGCCATGAGCGAACCCCGCTGCTACACGCCATGGTGGTGGCCGGCGCCGATCTATGCCCTCG
 GGGCCGATGGACCACGTGGACCCTGCTTCGACGTGCTGGCTGTGGAGTACTATGTGCCGGAGACGGA
 CCAGTGGACCAGCATGAGCCCCATGCGGGCCGGCCAGTACAGGGCCGGCTGCTGCCTGCTGGAGAGGAAG
 ATCTACATCGTGGGGGCTACAACCTGGCGTCTCAACAACGTACGGGCATCGTACAGGTGTACAACCGG
 ACACCGACGAGTGGGAGCGGGACCTGCACTTCCGGAGTCTTCGAGGCATAGCCTGCGCCCCGCTCCT
 GCTGCCCGGGCCGGGACCAGGAGG

ACGCGTACGCGGCCGCTCGAGCAGAACTCATCTCAGAAGAGGATCTGGCAGCAAATGATATCCTGGATT
 ACAAGGATGACGACGATAAGGTTTAA

Protein Sequence:

>RC205222 protein sequence
 Red=Cloning site Green=Tags(s)

MAESGSSGGAGGGGAFGAGPGPERPNSTADKNGALKCTFSAPSHSTSLQGLATLRAQQQLLDVLTIN
 REAFPANHVVLAACSDYFRAMFTGGMREASQDVIKGV SARGLRHIIDFAYS AEVTLDLDCVQDVLGAA
 VFLQMLPVVELCEEFLKAAMSVETCLNIGQMATTFFSLASLRESVDAFTFRHFLQIAEEEDFLRPLERLV
 FFLQSNRLQS CAEIDL FRAAVRWLQHDPARRPRASHVLCHIRFPLMQSSELVDSVQTLDIMVEDVLCRQY
 LLEAFNYQVLPFRQHMQSPRTAVRSDVPSLVTFGGTPYTDSDRSVSSKVYQLPEPGARHFRELTEMEVG
 CSHTCVAVLDNFVYVAGGQHLQYRSGEGAVDACRYRDPHLNRWLRQAMQESRIQFLNLVLCGMVYATGG
 RNRAGSLASVERYCPRRNEWGYACSLKRRTWGHAGAASGGRLYISGGYGISVEDKKALHCYDVPADQWEF
 KAPMSEPRVLHAMVAGGRIYALGGRMDHVDRCFDVLAVEYVPETDQWTSMSPMRAGQSEAGCCLLERK
 IYIVGGYNWRLNNVTGIVQVYNTDDEWERDLHFPE SFAGIACAPVLLPRAGTRR

TRTRPLEQKLISEEDLAANDILDYKDDDDKV

Restriction Sites:

SgfI-MluI

Cloning Scheme:


ACCN: NM_018316

ORF Size: 1845 bp

OTI Disclaimer: The molecular sequence of this clone aligns with the gene accession number as a point of reference only. However, individual transcript sequences of the same gene can differ through naturally occurring variations (e.g. polymorphisms), each with its own valid existence. This clone is substantially in agreement with the reference, but a complete review of all prevailing variants is recommended prior to use. [More info](#)

OTI Annotation: This clone was engineered to express the complete ORF with an expression tag. Expression varies depending on the nature of the gene.

Components: The ORF clone is ion-exchange column purified and shipped in a 2D barcoded Matrix tube containing 10ug of transfection-ready, dried plasmid DNA (reconstitute with 100 ul of water).

Reconstitution Method:

1. Centrifuge at 5,000xg for 5min.
2. Carefully open the tube and add 100ul of sterile water to dissolve the DNA.
3. Close the tube and incubate for 10 minutes at room temperature.
4. Briefly vortex the tube and then do a quick spin (less than 5000xg) to concentrate the liquid at the bottom.
5. Store the suspended plasmid at -20°C. The DNA is stable for at least one year from date of shipping when stored at -20°C.

RefSeq: [NM_018316.3](#)

RefSeq Size: 3122 bp

RefSeq ORF: 1848 bp

Locus ID: 55295

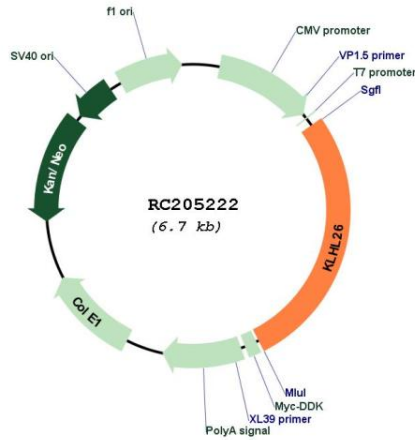
UniProt ID: [Q53HC5](#)

Cytogenetics: 19p13.11

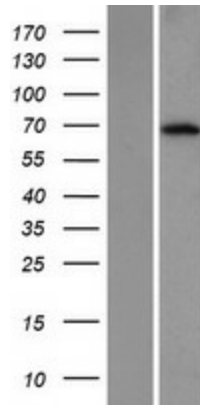
Domains: BTB, Kelch

MW: 68.2 kDa

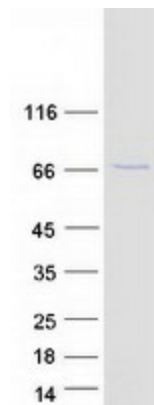
Product images:



Circular map for RC205222



Western blot validation of overexpression lysate (Cat# [LY413159]) using anti-DDK antibody (Cat# [TA50011-100]). Left: Cell lysates from untransfected HEK293T cells; Right: Cell lysates from HEK293T cells transfected with RC205222 using transfection reagent MegaTran 2.0 (Cat# [TT210002]).



Coomassie blue staining of purified KLHL26 protein (Cat# [TP305222]). The protein was produced from HEK293T cells transfected with KLHL26 cDNA clone (Cat# RC205222) using MegaTran 2.0 (Cat# [TT210002]).