

Product datasheet for **RC205221**

KRT23 (NM_015515) Human Tagged ORF Clone

Product data:

Product Type:	Expression Plasmids
Product Name:	KRT23 (NM_015515) Human Tagged ORF Clone
Tag:	Myc-DDK
Symbol:	KRT23
Synonyms:	CK23; HAIK1; K23
Mammalian Cell Selection:	Neomycin
Vector:	pCMV6-Entry (PS100001)
E. coli Selection:	Kanamycin (25 ug/mL)



[View online »](#)

ORF Nucleotide Sequence:

>RC205221 ORF sequence
 Red=Cloning site Blue=ORF Green=Tags(s)

TTTTGTAATACGACTCACTATAGGGCGGCCGGAATTCGTCGACTGGATCCGGTACCGAGGAGATCTGCC
 GCC**CGGATCGCC**

ATGAACTCCGGACACAGCTTCAGCCAGACCCCCTCGGCCTCCTCCATGGCGCCGGAGGTGGCTGGGGCC
 GGCCAGGAGCTTCCCCAGGGCTCCACCGTCCATGGCGGTGCGGGGGAGCCCGCATCTCCCTGTCTT
 CACCACGCGGAGCTGCCACCCCCTGGAGGGTCTTGGGGTTCTGGAAGAAGCAGCCCCCTACTAGGCGGA
 AATGGGAAGGCCACCATGCAGAATCTCAACGACCGCTGGCTCCTACGTGGAGAAGGTTGCGCCCTGG
 AGGAGGCCAACATGAAGCTGAAAGCCGCATCCTGAAATGGCACCAGCAGAGAGATCCTGGCAGTAAGAA
 AGATTATTCACAGTATGAGGAAAACATCACACCTGCAGGAGCAGATAGTGGATGGTAAGATGACCAAT
 GCTCAGATTATTCTTCTCATTGACAATGCCAGGATGGCAGTGGATGACTTCAACCTCAAGTATGAAAATG
 AACACTCCTTTAAGAAAGACTTGGAAATGAAGTCGAGGGCCTCCGAAGGACCTTAGACAACCTGACCAT
 TGTCAACAAGACCTAGAACAGGAGGTGGAAGGAATGAGGAAAGAGCTCATTCTCATGAAGAAGCACCAT
 GAGCAGGAAATGGAGAAGCATCATGTGCCAAGTGAATCAATGTCAATGTGAAGGTGGATACGGGTCCCA
 GGAAGATCTGATTAAGTCTGGAGGATATGAGACAAGAATATGAGCTTATAATAAAGAAGAAGCATCG
 AGACTTGGACACTTGGTATAAAGAACAGTCTGCAGCCATGTCCCAGGAGGCAGCCAGTCCAGCCACTGTG
 CAGAGCAGACAAGGTGACATCCACGAACTGAAGCGCACATTCCAGGCCCTGGAGATTGACCTGCAGACAC
 AGTACAGCACGAAATCTGCTTTGGAAAACATGTTATCCGAGACCCAGTCTCGGTACTCCTGCAAGCTCCA
 GGACATGCAAGAGATCATCTCCACTATGAGGAGGAAGTACGCGAGTACGCCATGAACTGGAGCGGCAG
 AACATGAATACCAAGTCTGCTGGGCATCAAAACCCACCTGGAGAAGGAAATCACCACGTACCGACGGC
 TCCTGGAGGGAGAGAGTGAAGGGACACGGGAAGAATCAAAGTCGAGCATGAAAGTGTTCGCAACTCCAAA
 GATCAAGGCCATAACCCAGGAGACCATCAACGGAAGATTAGTTCTTTGTCAAGTGAATGAAATCCAAAAG
 CACGCA

ACGCGTACGCGGCCGCTCGAGCAGAAACTCATCTCAGAAGAGGATCTGGCAGCAATGATATCCTGGATT
 ACAAGGATGACGACGATAAGGTTTAA

Protein Sequence:

>RC205221 protein sequence
 Red=Cloning site Green=Tags(s)

MNSGHSFSQTPSASFHGAGGGWGRPRSFPRAPT VHGGAGGARISLSFTTRSCPPPGGSWGSGRSSPLLGG
 NGKATMQNLNDRLASVVEKVRAL EENMKLESRLKWHQQRDPGSKKDYSQYEENITHLQEIVDGKMTN
 AQIILLIDNARMAVDDFNLYENEHSFKKDL EIEVEGLRRLDNL TIVTDLQEVEGMRKELILMKKHH
 EQEMEKHHVPSDFNVNVKVDTPREDL IKVLEDMRQEYEL IIKKKHRDLDTWYKEQSAAMSQEAASPATV
 QSRQGD IHELKRTFQALEIDLQTQYSTKSALENML SETQSRYSCKLQDMQEII SHYEEEL TQLRHELERQ
 NNEYQVLLGIKTHLEKEITTYRRLLEGESEGTREESKSSMKVFA TPKIKAITQETINGRLVLCQVNEIQK
 HA

TRTRPLEQKLISEEDLAANDILDYKDDDDKV

Chromatograms:

https://cdn.origene.com/chromatograms/mk6072_f02.zip

Restriction Sites:

SgfI-MluI

Cloning Scheme:


ACCN: NM_015515

ORF Size: 1266 bp

OTI Disclaimer: The molecular sequence of this clone aligns with the gene accession number as a point of reference only. However, individual transcript sequences of the same gene can differ through naturally occurring variations (e.g. polymorphisms), each with its own valid existence. This clone is substantially in agreement with the reference, but a complete review of all prevailing variants is recommended prior to use. [More info](#)

OTI Annotation: This clone was engineered to express the complete ORF with an expression tag. Expression varies depending on the nature of the gene.

Components: The ORF clone is ion-exchange column purified and shipped in a 2D barcoded Matrix tube containing 10ug of transfection-ready, dried plasmid DNA (reconstitute with 100 ul of water).

Reconstitution Method:

1. Centrifuge at 5,000xg for 5min.
2. Carefully open the tube and add 100ul of sterile water to dissolve the DNA.
3. Close the tube and incubate for 10 minutes at room temperature.
4. Briefly vortex the tube and then do a quick spin (less than 5000xg) to concentrate the liquid at the bottom.
5. Store the suspended plasmid at -20°C. The DNA is stable for at least one year from date of shipping when stored at -20°C.

RefSeq: [NM_015515.2](#)

RefSeq Size: 2228 bp

RefSeq ORF: 1269 bp

Locus ID: 25984

UniProt ID: [Q9C075](#)

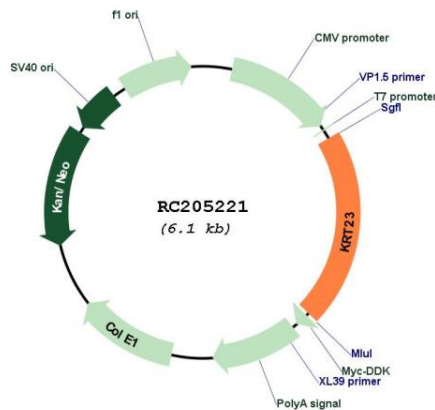
Cytogenetics: 17q21.2

Domains: filament

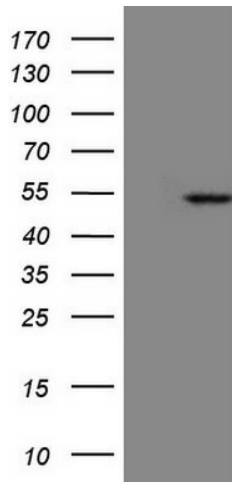
MW: 48.2 kDa

Gene Summary: The protein encoded by this gene is a member of the keratin family. The keratins are intermediate filament proteins responsible for the structural integrity of epithelial cells and are subdivided into cytokeratins and hair keratins. The type I cytokeratins consist of acidic proteins which are arranged in pairs of heterotypic keratin chains. The type I cytokeratin genes are clustered in a region of chromosome 17q12-q21. Alternative splicing results in multiple transcript variants. [provided by RefSeq, Sep 2013]

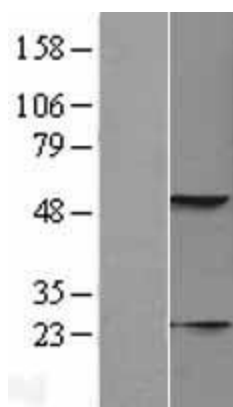
Product images:



Circular map for RC205221



HEK293T cells were transfected with the pCMV6-ENTRY control (Cat# [PS100001], Left lane) or pCMV6-ENTRY KRT23 (Cat# RC205221, Right lane) cDNA for 48 hrs and lysed. Equivalent amounts of cell lysates (5 ug per lane) were separated by SDS-PAGE and immunoblotted with anti-KRT23 (Cat# [TA808818])(1:2000). Positive lysates [LY402445] (100ug) and [LC402445] (20ug) can be purchased separately from OriGene.



Western blot validation of overexpression lysate (Cat# [LY402445]) using anti-DDK antibody (Cat# [TA50011-100]). Left: Cell lysates from untransfected HEK293T cells; Right: Cell lysates from HEK293T cells transfected with RC205221 using transfection reagent MegaTran 2.0 (Cat# [TT210002]).