

## Product datasheet for RC205220L4

### DUSP1 (NM\_004417) Human Tagged Lenti ORF Clone

#### Product data:

Product Type:	Expression Plasmids
Product Name:	DUSP1 (NM_004417) Human Tagged Lenti ORF Clone
Tag:	mGFP
Symbol:	DUSP1
Synonyms:	CL100; HVH1; MKP-1; MKP1; PTPN10
Mammalian Cell Selection:	Puromycin
Vector:	pLenti-C-mGFP-P2A-Puro (PS100093)
E. coli Selection:	Chloramphenicol (34 ug/mL)
ORF Nucleotide Sequence:	The ORF insert of this clone is exactly the same as(RC205220).
Restriction Sites:	SgfI-MluI
Cloning Scheme:	

Cloning sites used for ORF Shuttling:



\* The last codon before the Stop codon of the ORF.

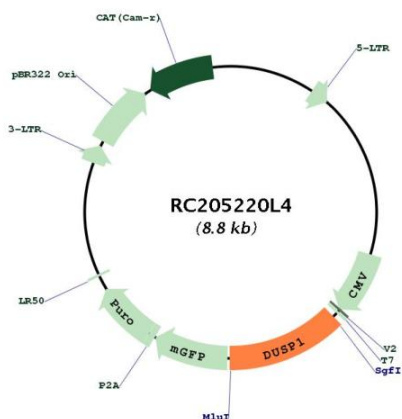
ACCN:	NM_004417
ORF Size:	1101 bp



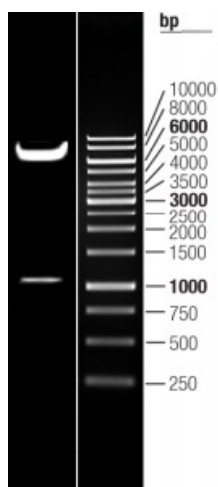
[View online »](#)

<b>OTI Disclaimer:</b>	The molecular sequence of this clone aligns with the gene accession number as a point of reference only. However, individual transcript sequences of the same gene can differ through naturally occurring variations (e.g. polymorphisms), each with its own valid existence. This clone is substantially in agreement with the reference, but a complete review of all prevailing variants is recommended prior to use. <a href="#">More info</a>
<b>OTI Annotation:</b>	This clone was engineered to express the complete ORF with an expression tag. Expression varies depending on the nature of the gene.
<b>Components:</b>	The ORF clone is ion-exchange column purified and shipped in a 2D barcoded Matrix tube containing 10ug of transfection-ready, dried plasmid DNA (reconstitute with 100 ul of water).
<b>Reconstitution Method:</b>	<ol style="list-style-type: none"><li>1. Centrifuge at 5,000xg for 5min.</li><li>2. Carefully open the tube and add 100ul of sterile water to dissolve the DNA.</li><li>3. Close the tube and incubate for 10 minutes at room temperature.</li><li>4. Briefly vortex the tube and then do a quick spin (less than 5000xg) to concentrate the liquid at the bottom.</li><li>5. Store the suspended plasmid at -20°C. The DNA is stable for at least one year from date of shipping when stored at -20°C.</li></ol>
<b>RefSeq:</b>	<a href="#">NM_004417.2</a>
<b>RefSeq Size:</b>	2015 bp
<b>RefSeq ORF:</b>	1104 bp
<b>Locus ID:</b>	1843
<b>UniProt ID:</b>	<a href="#">P28562</a>
<b>Cytogenetics:</b>	5q35.1
<b>Domains:</b>	DSPc, RHOD, PTPc_motif
<b>Protein Families:</b>	Druggable Genome, Phosphatase
<b>Protein Pathways:</b>	MAPK signaling pathway
<b>MW:</b>	39.1 kDa
<b>Gene Summary:</b>	The protein encoded by this gene is a phosphatase with dual specificity for tyrosine and threonine. The encoded protein can dephosphorylate MAP kinase MAPK1/ERK2, which results in its involvement in several cellular processes. This protein appears to play an important role in the human cellular response to environmental stress as well as in the negative regulation of cellular proliferation. Finally, the encoded protein can make some solid tumors resistant to both chemotherapy and radiotherapy, making it a target for cancer therapy. [provided by RefSeq, Aug 2017]

Product images:



Circular map for RC205220L4



Double digestion of RC205220L4 using SgfI and MluI