

Product datasheet for RC205201

GPRC5B (NM_016235) Human Tagged ORF Clone

Product data:

Product Type:	Expression Plasmids
Product Name:	GPRC5B (NM_016235) Human Tagged ORF Clone
Tag:	Myc-DDK
Symbol:	GPRC5B
Synonyms:	RAIG-2; RAIG2
Mammalian Cell Selection:	Neomycin
Vector:	pCMV6-Entry (PS100001)
E. coli Selection:	Kanamycin (25 ug/mL)
ORF Nucleotide Sequence:	>RC205201 ORF sequence Red=Cloning site Blue=ORF Green=Tags(s)

TTTTGTAATACGACTCACTATAGGGCGCCGGGAATTCGTCGACTGGATCCGGTACCGAGGAGATCTGCC
GCC**CGATCGCC**

ATGTTTCGTGGCATCAGAGAGAAAGATGAGAGCTCACCAGGTGCTCACCTTCTCCTGCTCTTCGTGATCA
CCTCGTGGCCTCTGAAAACGCCAGCACATCCCGAGGCTGTGGGCTGGACCTCCTCCCTCAGTACGTGTC
CCTGTGCGACCTGGACGCCATCTGGGCATTGTGGTGGAGGCGGTGGCCGGGGCGGGCCCTGATCACA
CTGCTCCTGATGCTCATCTCCTGGTGGGCTGCCCTTCAAGGAGAAGGAGAAGAAGAGCCCTGTGG
GCCTCCACTTTCTGTTCTCCTGGGACCTGGGCCTTTGGGCTGACGTTTGCCTTCATCATCCAGGA
GGACGAGACCATCTGCTCTGTCCGCCGCTTCTCTGGGGCGTCCCTTTGCGCTCTGCTTCTCCTGCCTG
CTGAGCCAGGCATGGCGCGTGGCAGGCTGGTGGCGCATGGCACGGGCCCCGCGGGCTGGCAGCTGGTGG
GCCTGGGCTGTGCCTGATGCTGGTGAAGTCATCATCGCTGTGGAGTGGCTGGTCTCACCGTGTGCG
TGACACAAGGCCAGCCTGCGCCTACGAGCCATGGACTTTGTGATGGCCCTCATCTACGACATGGTACTG
CTTGTGGTCACCTGGGCTGGCCCTTCACTCTGTGCGGAAGTTCAAGAGGTGAAGCTGAACGGGG
CCTTCTCCTCATCACAGCCTTCTCTGTGCTCATCTGGGTGGCCTGGATGACCATGTACCTCTTCGG
CAATGTCAAGCTGCAGCAGGGGGATGCCTGGAACGACCCACCTTGCCATCACGCTGGCGGCCAGCGGC
TGGGTCTTCGTATCTTCCAGCCATCCCTGAGATCCACTGCACCCTTCTGCCAGCCCTGCAGGAGAACA
CGCCAACTACTTCGACACGTCGACGCCAGGATGCGGGAGACGGCCTTCGAGGAGGACGTGCAGCTGCC
GCGGGCCTATATGGAGAACAAGCCTTCTCCATGGATGAACACAATGCAGCTCTCCGAACAGCAGGATTT
CCCAACGGCAGCTTGGGAAAAGACCCAGTGGCAGCTTGGGAAAAGACCCAGCGCTCCGTTTAGAAGCA
ACGTGTATCAGCCAAGTGCAGTGGCGTCTCAACGGTGGGACCATCCCAACTGCTCCGCCAAGTCA
CACAGGAAGACACCTTTGG

ACGCGTACGCGGCCGCTCGAGCAGAACTCATCTCAGAAGAGGATCTGGCAGCAAATGATATCCTGGATT
ACAAGGATGACGACGATAAGGTTTAA



- Reconstitution Method:**
1. Centrifuge at 5,000xg for 5min.
 2. Carefully open the tube and add 100ul of sterile water to dissolve the DNA.
 3. Close the tube and incubate for 10 minutes at room temperature.
 4. Briefly vortex the tube and then do a quick spin (less than 5000xg) to concentrate the liquid at the bottom.
 5. Store the suspended plasmid at -20°C. The DNA is stable for at least one year from date of shipping when stored at -20°C.

RefSeq: [NM_016235.3](#)

RefSeq Size: 2870 bp

RefSeq ORF: 1212 bp

Locus ID: 51704

UniProt ID: [Q9NZH0](#)

Cytogenetics: 16p12.3

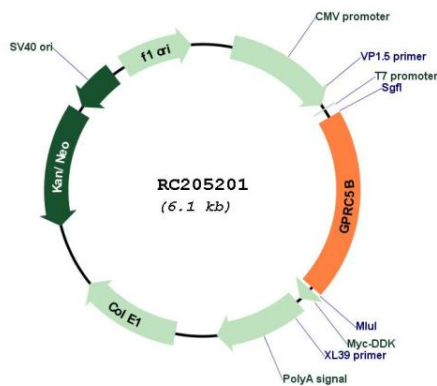
Domains: 7tm_3

Protein Families: Druggable Genome

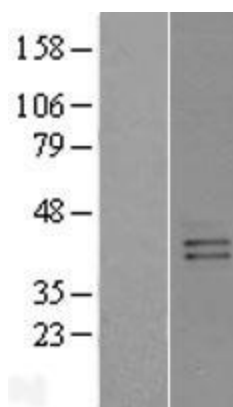
MW: 44.8 kDa

Gene Summary: This gene encodes a member of the type 3 G protein-coupled receptor family. Members of this superfamily are characterized by a signature 7-transmembrane domain motif. The encoded protein may modulate insulin secretion and increased protein expression is associated with type 2 diabetes. Alternative splicing results in multiple transcript variants. [provided by RefSeq, Feb 2015]

Product images:



Circular map for RC205201



Western blot validation of overexpression lysate (Cat# [LY402523]) using anti-DDK antibody (Cat# [TA50011-100]). Left: Cell lysates from untransfected HEK293T cells; Right: Cell lysates from HEK293T cells transfected with RC205201 using transfection reagent MegaTran 2.0 (Cat# [TT210002]).