

Product datasheet for **RC205190**

LIM domain only 3 (LMO3) (NM_018640) Human Tagged ORF Clone

Product data:

Product Type: Expression Plasmids
Product Name: LIM domain only 3 (LMO3) (NM_018640) Human Tagged ORF Clone
Tag: Myc-DDK
Symbol: LIM domain only 3
Synonyms: RBTN3; RBTNL2; Rhom-3; RHOM3
Mammalian Cell Selection: Neomycin
Vector: pCMV6-Entry (PS100001)
E. coli Selection: Kanamycin (25 ug/mL)
ORF Nucleotide Sequence: >RC205190 ORF sequence
Red=Cloning site Blue=ORF Green=Tags(s)

TTTTGTAATACGACTCACTATAGGGCGCCGGGAATTCGTCGACTGGATCCGGTACCGAGGAGATCTGCC
GCC**CGATCGCC**

ATGCTCTCAGTCCAGCCAGACACCAAGCCGAAAGGTTGTGCTGGCTGCAACCGAAAGATCAAGGACCGGT
ATCTTCTAAAGGCACTGGACAAATACTGGCATGAAGACTGCCTGAAGTGTGCCTGCTGTGACTGTCGCTT
GGGAGAGGTGGGCTCCACCCTGTACACTAAAGCTAATCTTATCCTTTGTCGCAGAGACTATCTGAGGCTC
TTTGGTGAACGGGAACTGCGCTGCCTGTAGTAAGCTCATCCCTGCCTTTGAGATGGTGTGCGTGCCA
AGGACAATGTTTACCACCTGGACTGCTTTGCATGTCAGCTTTGTAATCAGAGATTTTGTGTTGGAGACAA
ATTTTTCTAAAGAATAACATGATCCTTTGCCAGACGGACTACGAGGAAGGTTTAAATGAAAGAAGGTTAT
GCACCCAGGTTCCG

ACGCGTACGCGGCCGCTCGAGCAGAACTCATCTCAGAAGAGGATCTGGCAGCAAATGATATCCTGGATT
ACAAGGATGACGACGATAAGGTTTAA

Protein Sequence: >RC205190 protein sequence
Red=Cloning site Green=Tags(s)
MLSVQPDTPKPGCAGCNRKIKDRYLLKALDKYWHEDCLKACCCDRLGEVSTLYTKANLILCRRDYLR
FGVTGNCAACSKLIPAFEMVMRAKDNVYHLDCFACQLCNQRFVGDKFFLKNMILCQTDYEEGLMKEGY
APQVR

TRTRPLEQKLISEEDLAANDILDYKDDDDKV

Chromatograms: https://cdn.origene.com/chromatograms/mk6026_c04.zip



[View online >](#)

Restriction Sites: SgfI-MluI

Cloning Scheme:



ACCN: NM_018640

ORF Size: 435 bp

OTI Disclaimer: The molecular sequence of this clone aligns with the gene accession number as a point of reference only. However, individual transcript sequences of the same gene can differ through naturally occurring variations (e.g. polymorphisms), each with its own valid existence. This clone is substantially in agreement with the reference, but a complete review of all prevailing variants is recommended prior to use. [More info](#)

OTI Annotation: This clone was engineered to express the complete ORF with an expression tag. Expression varies depending on the nature of the gene.

Components: The ORF clone is ion-exchange column purified and shipped in a 2D barcoded Matrix tube containing 10ug of transfection-ready, dried plasmid DNA (reconstitute with 100 ul of water).

Reconstitution Method:

1. Centrifuge at 5,000xg for 5min.
2. Carefully open the tube and add 100ul of sterile water to dissolve the DNA.
3. Close the tube and incubate for 10 minutes at room temperature.
4. Briefly vortex the tube and then do a quick spin (less than 5000xg) to concentrate the liquid at the bottom.
5. Store the suspended plasmid at -20°C. The DNA is stable for at least one year from date of shipping when stored at -20°C.

RefSeq: [NM_018640.5](#)

RefSeq Size: 3850 bp

RefSeq ORF: 438 bp

Locus ID: 55885

UniProt ID: [Q8TAP4](#)

Cytogenetics: 12p12.3

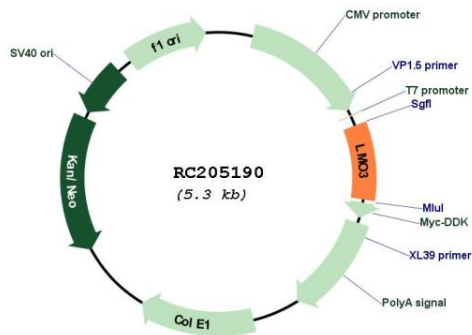
Domains: LIM

Protein Families: Transcription Factors

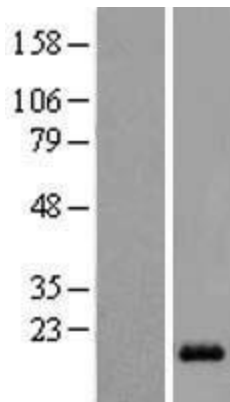
MW: 16.6 kDa

Gene Summary: The protein encoded by this gene belongs to the rhombotin family of cysteine-rich LIM domain oncogenes. This gene is predominantly expressed in the brain. Related family members, LMO1 and LMO2 on chromosome 11, have been reported to be involved in chromosomal translocations in T-cell leukemia. Many alternatively spliced transcript variants have been found for this gene. [provided by RefSeq, Aug 2011]

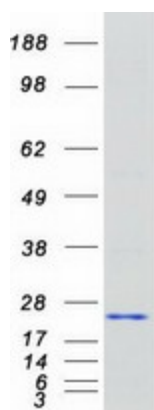
Product images:



Circular map for RC205190



Western blot validation of overexpression lysate (Cat# [LY402699]) using anti-DDK antibody (Cat# [TA50011-100]). Left: Cell lysates from untransfected HEK293T cells; Right: Cell lysates from HEK293T cells transfected with RC205190 using transfection reagent MegaTran 2.0 (Cat# [TT210002]).



Coomassie blue staining of purified LMO3 protein (Cat# [TP305190]). The protein was produced from HEK293T cells transfected with LMO3 cDNA clone (Cat# RC205190) using MegaTran 2.0 (Cat# [TT210002]).