

Product datasheet for **RC205189**

KLHL1 (NM_020866) Human Tagged ORF Clone

Product data:

Product Type:	Expression Plasmids
Product Name:	KLHL1 (NM_020866) Human Tagged ORF Clone
Tag:	Myc-DDK
Symbol:	KLHL1
Synonyms:	MRP2
Mammalian Cell Selection:	Neomycin
Vector:	pCMV6-Entry (PS100001)
E. coli Selection:	Kanamycin (25 ug/mL)



[View online »](#)

ORF Nucleotide Sequence:

>RC205189 ORF sequence
 Red=Cloning site Blue=ORF Green=Tags(s)

TTTTGTAATACGACTCACTATAGGGCGGCCGGGAATTCGTCGACTGGATCCGGTACCGAGGAGATCTGCC
 GCC**CGGATCGCC**

ATGTCAGGCTCTGGGCGAAAAGACTTCGATGTGAAGCACATTCTGCGACTCCGCTGGAACTCTTCAGCC
 ACCCGTCTCCTTCCACCGCGGCCCGGCCGGGGGAGGCTGCCTGCAACAGGACGGCAGTGGCAGCTTTGA
 GCACTGGGGACCCAGCCAGAGTCGCTGCTCAAAAGCCAAGAGAGAAGCGGTGTGAGCACTTTCTGGAAG
 AAGCCTTCTCCTCTTCTCCTTTCATCGTCTCCCCGCTCCTTCTCCTCTTCTTCAATCCGCTGAATG
 GCACCTGCTTCCAGTTGCCACGAGGCTGCAGCAAGGGGCTCCTGGCAGGGCACTCAGCAGCCAGCCAG
 GACTCTCTTACGTGGAGTCACTAGAGGAGGAGTGGTGCCAGGCATGGACTTTCCTGGACCACACGAA
 AAAGGGCTGGTTCTGCAAGAGCTCAAAGTGAGCCAGACAACCTAGCCAGGCAACAGGTGAAGGATGTG
 GACACAGGCTGCATCAACCGGCCATTCAATGACACCTCAAAGTGATTTGGACTCCAGTAGCTCTGAAGA
 ATTCTATCAAGCTGTTTCATGCTGAGCAAACCTTCAGAAAGATGGAAGTTATTTGAAGCAGCAGCAA
 CTTTGTGATGTTATCCTGATTGTTGGGAACCGAAAGATACCTGCACATAGGCTTGTCTGAGTTCAGTCT
 CCGACTATTTTGGCGCCATGTTTACAAGTGATGTTTGTGAAGCCAAGCAAGAGGAGATCAAAATGGAAGG
 CATAGACCCCAATGCTCTCTGGACCTTGTCCAATTTGCATATACAGGCTGCTTGGAAATTTAAAGAGGAC
 ACCATTGAGAACCTTCTTGTGCAGCGTGCCTTTCAGCTTCCACAGGTGGTGGAAAGTGTGCTGCCACT
 TCCTCATGAAGCTTTTGCATCCATCTAACTGTTTAGGAATTCGAGCCTTCGCAGATGCTCAAGGATGCAT
 TGAGTTAATGAAGGTGGCCACAGCTACACAATGGAAAACATAATGGAAGTTATCAGAAATCAAGAGTTT
 TTACTCCTTCCAGCTGAGGAGCTCCATAAACTACTGGCCAGTGATGATGCAATGTTCTGATGAAGAAA
 CCATCTTCCATGCATTGATGATGTGGTCAAGTATGACATGCAGAGTAGGTGCAATGACCTGAGCATGCT
 TCTTGCCTTTATAAGACTGCCACTGCTTCCGCCACAGATATTGGCTGACCTAGAAAATCATGCATTATTT
 AAGAATGATGTGGAATGTCAAAAGCTGATTCTAGAAGCAATGAAATACCATCTATTGCCAGAAAAGAGAA
 CTTTAATGCAAAGTCCGAGAACTAAACCCAGAAAATCTACAGTCGGAACCTTTGTATGCTGTAGGAGGAAT
 GGATAACAACAAAGGAGCTACAACATAGAGAAAATGATCTGAGAACAATCTGTGGATCCAGGCAGGG
 ATGATGAATGGCAGAAGGCTGCAGTTGGTGTGGCTGTTATTGATGACAACTCTTTGTAATTGGAGGTC
 GAGATGGCTTAAAGACATTGAACACTGTTGAATGTTACAATCCCAAAACCAAGACATGGACTGTCTTACC
 ACCAATGTCAACACACAGACATGGTCTAGGTGTAACAGTACTTGAAGGCCCTATTTATGCTGTGGGAGGC
 CATGATGGCTGGAGCTATCTGAATACAGTGAAAGGTGGGATCCACAGAGTCAACAATGGACATTTGTAG
 CCAGTATGTCAATTGCTCGGAGCACAGTTGGTGTAGCAGCATTGAATGGCAAGTTGTATTCAAGTTGGAGG
 TCGTGATGGAAGTTCTGTTTGAAGTCAATGGAATATTATGATCCTCATACAAAATAGTGGAAACATGTGT
 GCTCCCATGTGTAAGAGGAGAGGGGGTGTCCGAGTGGCCACATGTGACGGTTTTCTTTATGACAGTAGGAG
 GTCATGATGCTCCTGCTTCAAACTACTGTTCCCGGCTACTGGATTATGTAGAAAGATATGATCCCAAAAC
 AGACACTTGGACCATGGTGGCTCCTTTGAGTATGCCAGAGATGCTGTTGGGGTCTGTCTCCTTGGTGAC
 AGATTATATGCTGTTGGTGGCTATGATGGACAGACATACCTCAACACTATGGAATCCTATGACCCACAAA
 CTAATGAGTGGACACAGATGGCTTCTTGAATATTGGGAGAGCAGGTGCCTGTGTGGTAGTCATCAAGCA
 ACCT

ACGCGTACGCGGCCGCTCGAGCAGAAACTCATCTCAGAAGAGGATCTGGCAGCAAATGATATCCTGGATT
 ACAAGGATGACGACGATAAGGTTTAA

Protein Sequence: >RC205189 protein sequence
Red=Cloning site Green=Tags(s)

```

MSGSGRKDFDVKHILRLRWKLFSHSPSTGGPAGGGCLQQDGSFSFEHWGPSQSRLKLSQERSGVSTFWK
KPSSSSSSSSSSSSSSFNPLNGTLLPVATRLQQGAPGGTQQPARTLFYVESLEEEVVPGMDFPGPHE
KGLVLQELKVEPDNSSQATGEGCGHRLSSTGHSMTTPQSDLDSSSSEEFYQAVHHAETFRKMESYLKQQQ
LCDVILIVGNRKIPAHRLVLSVSDYFAAMFTSDVCEAKQEEIKMEGIDPNALWDLVQFAYTGCLELKED
TIENLLAAACLQLPQVVEVCCFLMKLLHPSNCLGIRAFADAQGCIELMKVAHSYTMENIMEVIRNQEFL
LLLPAEELHKLLASDDVNPDEETIFHALMMWKYDMQSRCNDLSMLLAFIRLPLLPQILADLENHALF
KNDVEQCQLILEAMKYHLLPERRTLMSRPTKPRKSTVGTLYAVGGMDNNKGATTIEKYDLRTNLWIQAG
MMNGRRLQFVAVIDDKLFVIGGRDGLKTLNTEVCYNPKTKTWTVLPMMSTHRHGLGVTVLEGPYAVGG
HDGWSYLNTERWDPQSQQWTFVASMIAIRSTVGVAALNGKLYSVGGRDGSSCLSSMEYDPHTNKWNMC
APMCKRRGGVGVATCDGFLYAVGGHDAPASNHCSRLLDYVERYDPKTDWTMVAPLSMPRDAVGVCLLGD
RLYAVGGYDGTYLNTMESYDPQTNEWTQMASLNI GRAGACVVVIKQP
    
```

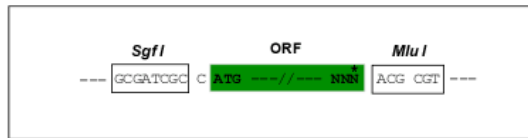
TRTRPLEQKLISEEDLAANDILDYKDDDDKV

Chromatograms: https://cdn.origene.com/chromatograms/mk6027_d03.zip

Restriction Sites: SgfI-MluI

Cloning Scheme:

Cloning sites used for ORF Shuttling:



* The last codon before the Stop codon of the ORF

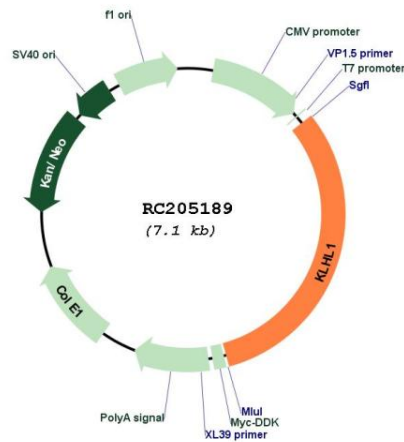
ACCN: NM_020866

ORF Size: 2244 bp

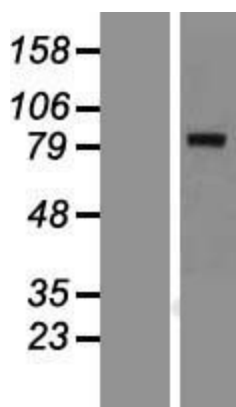
OTI Disclaimer: The molecular sequence of this clone aligns with the gene accession number as a point of reference only. However, individual transcript sequences of the same gene can differ through naturally occurring variations (e.g. polymorphisms), each with its own valid existence. This clone is substantially in agreement with the reference, but a complete review of all prevailing variants is recommended prior to use. [More info](#)

OTI Annotation: This clone was engineered to express the complete ORF with an expression tag. Expression varies depending on the nature of the gene.

Components:	The ORF clone is ion-exchange column purified and shipped in a 2D barcoded Matrix tube containing 10ug of transfection-ready, dried plasmid DNA (reconstitute with 100 ul of water).
Reconstitution Method:	<ol style="list-style-type: none"> 1. Centrifuge at 5,000xg for 5min. 2. Carefully open the tube and add 100ul of sterile water to dissolve the DNA. 3. Close the tube and incubate for 10 minutes at room temperature. 4. Briefly vortex the tube and then do a quick spin (less than 5000xg) to concentrate the liquid at the bottom. 5. Store the suspended plasmid at -20°C. The DNA is stable for at least one year from date of shipping when stored at -20°C.
RefSeq:	<u>NM_020866.3</u>
RefSeq Size:	4159 bp
RefSeq ORF:	2247 bp
Locus ID:	57626
UniProt ID:	<u>Q9NR64</u>
Cytogenetics:	13q21.33
Domains:	BTB, Kelch
MW:	82.7 kDa
Gene Summary:	The KLHL1 protein belongs to a family of actin-organizing proteins related to Drosophila Kelch (Nemes et al., 2000 [PubMed 10888605]).[supplied by OMIM, Feb 2010]

Product images:


Circular map for RC205189



Western blot validation of overexpression lysate (Cat# [LY412235]) using anti-DDK antibody (Cat# [TA50011-100]). Left: Cell lysates from untransfected HEK293T cells; Right: Cell lysates from HEK293T cells transfected with RC205189 using transfection reagent MegaTran 2.0 (Cat# [TT210002]).