

Product datasheet for **RC205187**

MDM1 (NM_017440) Human Tagged ORF Clone

Product data:

Product Type:	Expression Plasmids
Product Name:	MDM1 (NM_017440) Human Tagged ORF Clone
Tag:	Myc-DDK
Symbol:	MDM1
Mammalian Cell Selection:	Neomycin
Vector:	pCMV6-Entry (PS100001)
E. coli Selection:	Kanamycin (25 ug/mL)



[View online »](#)

ORF Nucleotide Sequence:

>RC205187 ORF sequence
 Red=Cloning site Blue=ORF Green=Tags(s)

TTTTGTAATACGACTCACTATAGGGCGGCCGGGAATTCGTCGACTGGATCCGGTACCGAGGAGATCTGCC
 GCC**CGCATCGCC**

ATGCCGGTGCCTTCAAGGGCTGAGTGAATACCAGAGGAACCTCCTGTGAAAAAGTCTTATTTGTCAG
 AGTCTTGAATTCCTCCGTGGGGCGAAAGTACCCATGGGCTGGACTTAGATCAGATCAATTAGGCATCAC
 GAAAGAGCCAAGTTTTATTTCAAAAAGAAGAGTCCCTTACCATGACCCACAGATTTCAAAATCTCTGGAG
 TGGAAATGGAGCTATCTCAGAGAGCAATGTGGTTGCATCACCAGAACCAGAAGCCCCGAAACACCAAAAT
 CACAAGAAGCAGAACAAAAGGATGTTATTCAAGAAAGAGTTCACTCACTAGAAGCTTCCAGGGTTCCCAA
 AAGAACCAGATCTCACTCTGCAGACTCCAGAGCTGAAGGGGCTTCAGATGTGAAAAATAATGAGGGTGT
 ACAAACCATACACCAGTTAATGAAAATGTGGAAGTGAACATTCTACCAAGTTCTTTAGAAAAATGTAG
 ATAAATGGGTTGGATAGACTTCTGCGTAAGAAAGCTGGATTGACTGTTGTTCCCTTCATATAATGCCTTGA
 AAATTCGAATATCAAAGGCAGTTTGTGGGAAGACTTCTAAAGAACTGCTCCAGCTTTTCAGCCCAAT
 CAGGTTTTCCACAATAAAAGCCAGTTTGTTCACCATTCAAAGGTAACCTAGTCATCCATGAAACTGAAT
 ACAAAGAAATTTCAAGGGTTTATCTCCAGTGAAGAACCAAAATTAAGAAATGATTTGAGAGAAAAACAG
 AAATCTTGAAACAGTGTCTCCTGAAAGGAAGAGTAATAAAATAGACGATCGTTTAAAAATGGAAAGCAGAG
 ATGGAATTAAGACTTACACCAGCCTAAAAGGAAGCTTACTCCTTGAAACATCAAAGGCTTGGGAAGG
 TGAATTCGAATATAGAGCAAAATTTCTGAGCCAGCTCAGTATTTATATAAAGCTGGGGCTTGGACACA
 TGTAAGGGAAACATGCCAAATCAGGTTAAGAACTCCGAGAAAAGGCTGAGTTTTATAGGAAGCGAGTT
 CAGGGGACGCATTTTTCTCGGGACCATCTGAATCAGATTTTATCTGATAGCAACTGCTGTTGGGATGCT
 CCTCAACCACAAGCTCAGAAGGAACCGTTAGTAGCAACATCAGAGCATTAGATCTTGCTGGAGATCCTAC
 AAGCCATAAGACTTTGCAGAAATGTCCTTCTACAGAACCAGAAGAAAAAGGAAATATCGTGGAAAGAACAG
 CCCCAGAAAAATACCACGGAGAAATGGGTGTGTGAGCTCCACCATACCCGTTAGAAGGCGGCTGGCTT
 GGGATACAGAGAACAAGTGAAGACGTACAGAAAACAGCCCGGGGAGAAAGAGGAGGAGGACGACAAATGA
 AGAGGAAGGGGACAGGAAAACGGGCAAGCAGGCTTTTATGGGAGAGCAAGAGAAGTTGGATGTACATGAG
 AAATCTAAGGCAGATAAGATGAAAGAAGGGTCAAGTCTTCTGTATCCTCAGAAAAGGAGGCCGGCTTC
 TACTCCCAAGCTGAGAGAACTTGGTGAATCCAGAGGACTCATCATGATCTCACTACTCCAGCTGTTGG
 TGGTGCTGTTTTAGTGTCTCCATCTAAGATGAAGCCTCCAGCCCTAGAACAGAGGAAAAGAAATGACCTCT
 CAGGATGTTTTAGAACTTCAAAGAATGATTTTACTAAGAAAGAAAGCTGTGCTGTATCCCTACTGACTT
 CTCCAGCTGCTGTATAAAAACAGTTGATCCTCTGCCTTTGCGGGAAGATTCTGAAGACAATATCCACAA
 ATTTGCTGAGGCAACTTCCAGTTTTCAAAAATCCAAAATACCCAACAATCCCCTGGACAGTTGCCCT
 TCTCCACCACATGTTCCATCCTACTGGCATCCCTCTCGACGAATTCAGGGCTCTCTTAGAGATCCAGAGT
 TTCAGCACAATGTGGAAAAGCAAGGATGAACAATTTGCAGTTACCTCAACATGAAGCCTTTAATGATGA
 AGATGAGGACAGATTGTCTGAGATTTCTGCTCGCTCTGCAGCTTCTAGTCTCCGGGCTTTTCAAACCTCG
 GCACGAGCTAAGAAAAGGAAGGAGAATTTCTGGGGTAAAAA

ACGCGTACGCGGCCGCTCGAGCAGAACTCATCTCAGAAGAGGATCTGGCAGCAATGATATCCTGGATT
 ACAAGGATGACGACGATAAGGTTTAA

Protein Sequence: >RC205187 protein sequence
Red=Cloning site Green=Tags(s)

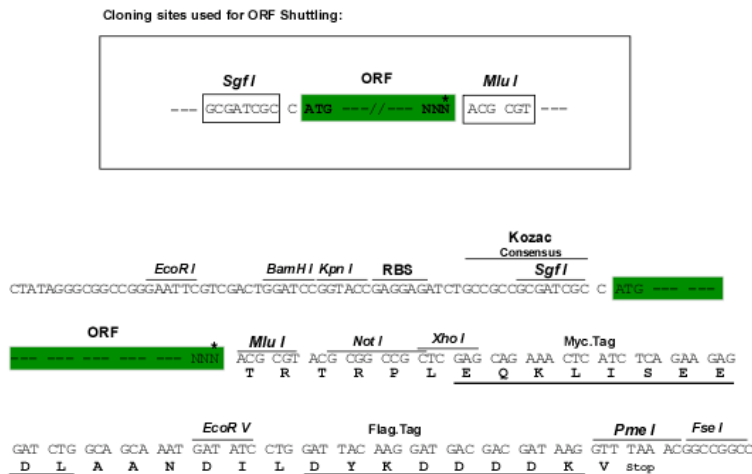
MPVRFKGLSEYQRNFWKKSYSLESCNSSVGRKYPWAGLRSDQLGITKEPSFISKRRVPHYHDPQISKSLE
 WNGAISESNVVASPEPEAPETPKSQEAEQKDVIQERVHSLASRVPKRTRSHSADSRAEGASDVENNEG
 TNHTPVNENVELEHSTKVLSENVNGLDRLLRKKAGLTVVPSYNALRNSEYQRQFVWKTSKETAPAF
 QVFHNKSKQFVPPFKGNSVIHETEKRNFKGLSPVKEPKLRNDLRENRLNLETVSPERKSNKIDDR
 LKLEAE
 MELKDLHQPKRKLTWPWKHQRLLGKVNSEYRAKFLSPAQYLKAGAWTHVKGMPNQVKELREKAE
 FYRKR
 VQGTHFSRDHLNQILSDSNCCWDVSSSTTSSEGTVSSNIRALDLAGDPTSHKTLQKCPSTEPEEK
 GNIVVEEQ
 PQKNTTEKLGVSAPTIPVRRRLAWDTENTSEDVQKQPGEKEEEDNNEEGDRKTGKQAFMGEQ
 EKLDVHE
 KSKADMKMEGSDSSVSSEKGGRLPTPKLRELGGIQRTHHDLTPAVGGAVLVSPSKMKPPALEQ
 RKRMTS
 QDCLETSKNDFTKKEGRAVLLTSPAAGIKTVDPPLPREDSNIIHKFAEATLPVSKIPKYPTNPP
 GQLP
 SPHPVPSYWHPSRRIQGSRLDPEFQHNVGKARMNNLQLPQHEAFNDEDEDRLSEISARSAAS
 SLRAFQTL
 ARAKKRKENFWGKT

TRTRPLEQKLISEEDLAANDILDYKDDDDKV

Chromatograms: https://cdn.origene.com/chromatograms/mk6536_d03.zip

Restriction Sites: SgfI-MluI

Cloning Scheme:



* The last codon before the Stop codon of the ORF

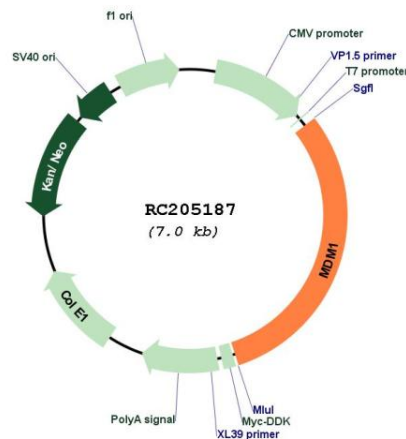
ACCN: NM_017440

ORF Size: 2142 bp

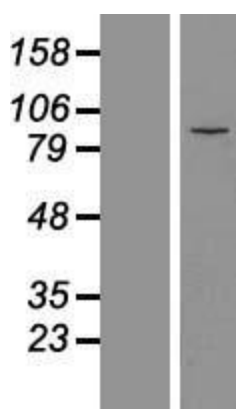
OTI Disclaimer: The molecular sequence of this clone aligns with the gene accession number as a point of reference only. However, individual transcript sequences of the same gene can differ through naturally occurring variations (e.g. polymorphisms), each with its own valid existence. This clone is substantially in agreement with the reference, but a complete review of all prevailing variants is recommended prior to use. [More info](#)

OTI Annotation: This clone was engineered to express the complete ORF with an expression tag. Expression varies depending on the nature of the gene.

Components:	The ORF clone is ion-exchange column purified and shipped in a 2D barcoded Matrix tube containing 10ug of transfection-ready, dried plasmid DNA (reconstitute with 100 ul of water).
Reconstitution Method:	<ol style="list-style-type: none"> 1. Centrifuge at 5,000xg for 5min. 2. Carefully open the tube and add 100ul of sterile water to dissolve the DNA. 3. Close the tube and incubate for 10 minutes at room temperature. 4. Briefly vortex the tube and then do a quick spin (less than 5000xg) to concentrate the liquid at the bottom. 5. Store the suspended plasmid at -20°C. The DNA is stable for at least one year from date of shipping when stored at -20°C.
RefSeq:	<u>NM_017440.3</u>
RefSeq Size:	2976 bp
RefSeq ORF:	2145 bp
Locus ID:	56890
UniProt ID:	<u>Q8TC05</u>
Cytogenetics:	12q15
Protein Families:	Druggable Genome
MW:	80.7 kDa
Gene Summary:	This gene encodes a microtubule-binding nuclear protein that localizes to the centrioles of dividing cells and differentiating multiciliated cells and negatively regulates centriole duplication. The encoded protein is closely associated with the centriole barrel, and resides in the centriole lumen. Naturally-occurring mutations in the orthologous mouse gene are associated with age-related retinal degeneration. [provided by RefSeq, Feb 2019]

Product images:


Circular map for RC205187



Western blot validation of overexpression lysate (Cat# [LY413754]) using anti-DDK antibody (Cat# [TA50011-100]). Left: Cell lysates from untransfected HEK293T cells; Right: Cell lysates from HEK293T cells transfected with RC205187 using transfection reagent MegaTran 2.0 (Cat# [TT210002]).