

## Product datasheet for **RC205184**

### PLSCR4 (NM\_020353) Human Tagged ORF Clone

#### Product data:

Product Type:	Expression Plasmids
Product Name:	PLSCR4 (NM_020353) Human Tagged ORF Clone
Tag:	Myc-DDK
Symbol:	PLSCR4
Synonyms:	TRA1
Mammalian Cell Selection:	Neomycin
Vector:	pCMV6-Entry (PS100001)
E. coli Selection:	Kanamycin (25 ug/mL)
ORF Nucleotide Sequence:	>RC205184 ORF sequence Red=Cloning site Blue=ORF Green=Tags(s)

TTTTGTAATACGACTCACTATAGGGCGGCCGGAATTCGTCGACTGGATCCGGTACCGAGGAGATCTGCC  
GCC**CGATCGCC**

ATGTCAGGTGTGGTACCCACAGCCCTGAACAGCCTGCAGGTGAAATGGAAAATCAAACAAAACCACCAG  
ATCCAAGCCTGATGCTCCTCCTGAATACAATTCTCATTTTTACCAGGACCCCTGGAACAGCTGTCCC  
TCCACCTACTGGTACCCAGGAGGCTTGCCTATGGGATACTACAGTCCACAGCAACCCAGTACCTCCCT  
TTGTACCAGCCAGTTGGTGGTATCCATCCTGTCCGGTATCAGCCTGGCAAATATCCTATGCCAAATCAGT  
CTGTTCCAATAACATGGATGCCAGGGCCAACTCCTATGGCAAATGCCCTCCTGGTCTGGAATACTTAGT  
TCAGTTGGACAACATACATGTTCTTCAGCATTTTGAGCCTCTGGAAATGATGACATGTTTTGAAACTAAT  
AATAGATATGATATTAACAACTCAGACCAGATGGTTTACATTGTAACCGAAGACACAGATGACTTTA  
CCAGGAATGCCTATCGGACACTAAGGCCCTTCGTCTCCGGGTCAGTATTGATGGGCCGAGAAATCAT  
GACAATGCAGAGACCCCTCAGATGCACCTGCTGTTGCTTCTGTTGCCCTCTGCCAGACAAGAGCTGGAG  
GTGCAGTGTCTCCTGGTGTACCATTTGGCTTTGTTGCGGAACATTGGAACCTGTGCAGGGCGGTGACA  
GCATCCAAAATGAGAAGAAAGAAAATGTGATGAGAGTTTCGTGGCCATGCTCAACCTATGGCTGTGGTTC  
AGATTCTGTTTTGAGGTCAAATCCCTTGATGGCATATCCAACATCGGCAGTATTATCCGGAAGTGAAT  
GGTTTGTATCAGCAATGGCAGATGCTGACCATTTTGACATTCCTCCACTAGACCTGGATGTGAAGA  
TGAAAGCCATGATTTTTGGAGCTTGCTTCTCATTGACTTCATGTATTTTGAAGATCTCCACCACAACG  
TTCAAGA

**ACGCGT**ACGCGGCCGCTCGAGCAGAACTCATCTCAGAAGAGGATCTGGCAGCAAATGATATCCTGGATT  
ACAAGGATGACGACGATAAGGTTTAA



[View online »](#)

**Protein Sequence:** >RC205184 protein sequence  
Red=Cloning site Green=Tags(s)

MSGVVPTAPEQPAGEMENQTKPPDPRPDAPPEYNHFLPGPPGTAVPPPTGYPGGLPMGYSPQPSTFP  
 LYQPVGGIHPVRYQPGKYMPNQSVPIITWMPGTPMANCPPGLEYLVLQLDNIHVLQHFEPLEMMTCFETN  
 NRYDIKNNSDQMVIYIVTEDTDDFTRNAYRTLRFVLRVTDGCMGREIMTMQRPFRCTCCFCPCPSARQELE  
 VQCPPGVTIGFVAEHWNL CRAVYSIQNEKKENVMRVRGPCSTYGGSDSVFEVKSLDGISNIGSIIKRWK  
 GLLSAMADADHFDIHFPLDL DVKMKAMIFGACFLIDFMYFERSPPQSR

TRTRPLEQKLISEEDLAANDILDYKDDDDKV

**Chromatograms:** [https://cdn.origene.com/chromatograms/mk6316\\_h04.zip](https://cdn.origene.com/chromatograms/mk6316_h04.zip)

**Restriction Sites:** SgfI-MluI

**Cloning Scheme:**

Cloning sites used for ORF Shuttling:



\* The last codon before the Stop codon of the ORF

**ACCN:** NM\_020353

**ORF Size:** 987 bp

**OTI Disclaimer:** The molecular sequence of this clone aligns with the gene accession number as a point of reference only. However, individual transcript sequences of the same gene can differ through naturally occurring variations (e.g. polymorphisms), each with its own valid existence. This clone is substantially in agreement with the reference, but a complete review of all prevailing variants is recommended prior to use. [More info](#)

**OTI Annotation:** This clone was engineered to express the complete ORF with an expression tag. Expression varies depending on the nature of the gene.

**Components:** The ORF clone is ion-exchange column purified and shipped in a 2D barcoded Matrix tube containing 10ug of transfection-ready, dried plasmid DNA (reconstitute with 100 ul of water).

**Reconstitution Method:**

1. Centrifuge at 5,000xg for 5min.
2. Carefully open the tube and add 100ul of sterile water to dissolve the DNA.
3. Close the tube and incubate for 10 minutes at room temperature.
4. Briefly vortex the tube and then do a quick spin (less than 5000xg) to concentrate the liquid at the bottom.
5. Store the suspended plasmid at -20°C. The DNA is stable for at least one year from date of shipping when stored at -20°C.

**RefSeq:** [NM\\_020353.3](#)

**RefSeq Size:** 3312 bp

**RefSeq ORF:** 990 bp

**Locus ID:** 57088

**UniProt ID:** [Q9NRQ2](#)

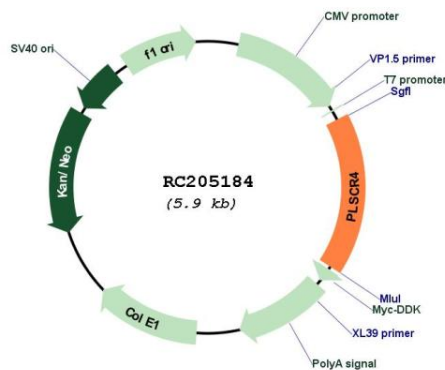
**Cytogenetics:** 3q24

**Domains:** Scramblase

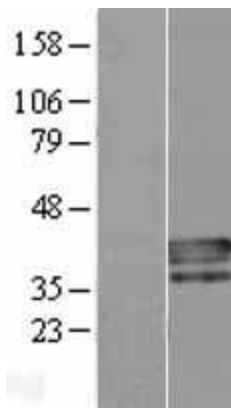
**MW:** 37 kDa

**Gene Summary:** May mediate accelerated ATP-independent bidirectional transbilayer migration of phospholipids upon binding calcium ions that results in a loss of phospholipid asymmetry in the plasma membrane. May play a central role in the initiation of fibrin clot formation, in the activation of mast cells and in the recognition of apoptotic and injured cells by the reticuloendothelial system.[UniProtKB/Swiss-Prot Function]

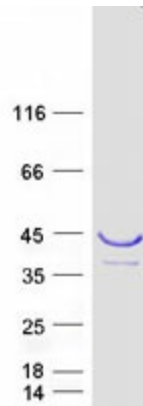
### Product images:



Circular map for RC205184



Western blot validation of overexpression lysate (Cat# [LY426943]) using anti-DDK antibody (Cat# [TA50011-100]). Left: Cell lysates from untransfected HEK293T cells; Right: Cell lysates from HEK293T cells transfected with [RC225478] using transfection reagent MegaTran 2.0 (Cat# [TT210002]).



Coomassie blue staining of purified PLSCR4 protein (Cat# [TP305184]). The protein was produced from HEK293T cells transfected with PLSCR4 cDNA clone (Cat# RC205184) using MegaTran 2.0 (Cat# [TT210002]).