

Product datasheet for **RC205178**

TBC1D15 (NM_022771) Human Tagged ORF Clone

Product data:

Product Type:	Expression Plasmids
Product Name:	TBC1D15 (NM_022771) Human Tagged ORF Clone
Tag:	Myc-DDK
Symbol:	TBC1D15
Synonyms:	RAB7-GAP
Mammalian Cell Selection:	Neomycin
Vector:	pCMV6-Entry (PS100001)
E. coli Selection:	Kanamycin (25 ug/mL)



[View online »](#)

ORF Nucleotide
Sequence:

>RC205178 representing NM_022771
Red=Cloning site Blue=ORF Green=Tags(s)

TTTTGTAATACGACTCACTATAGGGCGGCCGGGAATTCGTCGACTGGATCCGGTACCGAGGAGATCTGCC
GCCGCGATCGCC

ATGGCGGCGCGGGTGTGTGAGCGGGAAGATTATATATGAACAAGAAGGAGTATATATTCACTCATCTT
GTGAAAAGACCAATGACCAAGACGGCTTGATTTTCAGGAATATTACGTGTTTTAGAAAAGGATGCCGAAGT
AATAGTGGACTGGAGACCATTGGATGATGCATTAGATTCTCTAGTATTCTCTATGCTAGAAAGGACTCC
AGTTTCAGTTGTAGAATGGACTCAGGCCCAAAAAGAAAGAGGTCATCGAGGATCAGAACATCTGAACAGTT
ACGAAGCAGAATGGGACATGGTTAATACAGTTTCATTTAAAAGGAAACCACATACCAATGGAGATGCTCC
AAGTCATAGAAATGGGAAAAGCAATGGTCATTCTGTTTCAGTTTGACAGACCTGAAATCAATCAAGCAA
AACAAAGAGGGTATGGGCTGGTCTATTTGGTATTCTGTCTAAAGGATGACGTCGTTCTCCCTGCTCTAC
ACTTTTCATCAAGGAGATAGCAAACACTGATTGAATCTCTTGAAAATATGTGGTATTGTGTGAATCTCC
ACAGGATAAAAAGAACACTTCTTGTGAATTGTCAGAATAAGAGTCTTTCACAGTCTTTTGAAAATCTTCTT
GATGAGCCAGCATATGGTTTAATACAAGCAGGACTGCTAGACAGAAGAAAGCTGTTGTGGGCCATTACC
ACTGGAATAAAATTTAAAAGGACCCTTATACGGCAACTATGATAGGATTTTCAAAGTCACAAACTACAT
TTTTGACAGTTTGAGAGGCAGCGATCCCTCTACACATCAACGACCACCTTCAGAAATGGCAGATTTTCTT
AGTGATGCTATTCCAGGTCTAAAGATAAATCAACAAGAAGAACCAGGATTTGAAGTCATCACAAGAATTG
ATTTGGGGGAACGCCCTGTTGTTCAAAGGAGAGAACCAGGATCACTGGAAGAATGGACTAAGAACATTGA
TTCTGAAGGAAGAATTTAAATGTAGATAATATGAAGCAGATGATATTTAGAGGGGGACTTAGTCATGCA
TTGAGAAAAGCAAGCATGGAATTTCTTCTGGGTTATTTTCCCTGGGACAGTACCAAGGAGGAAAGAACC
AATTACAAAAGCAAAAACACTGATGAATACTTCAGAATGAAACTGCAGTGGAAATCCATCAGCCAGGAACA
AGAGAAAAGAAATTCGAGGTTAAGAGATTATAGAAGTCTTATCGAAAAGATGTTAACAGAACAGATCGA
ACAAACAAGTTTTATGAAGGCCAAGATAATCCAGGTTGATTTTACTTCATGACATTTTGTGACCTACT
GTATGTATGATTTGATTTAGGATATGTTCAAGGAATGAGTGATTTACTTTCCCTCTTTTATATGTGAT
GGAAAATGAAGTGGATGCCTTTTGGTGTCTTGCCTCTTACATGGACCAAATGCATCAGAATTTTGAAGAA
CAAATGCAAGGCATGAAGACCCAGCTAATTCAGCTGAGTACCTTACTTCGATTGTTAGACAGTGGATTTT
GCAGTTACTTAGAATCTCAGGACTCTGGATACCTTTATTTTGTTCAGGTGGCTTTTAAATCAGATTCAA
AAGGGAATTTAGTTTTCTAGATATCTTCGATTATGGGAGGTAATGTGGACCGAACTACCATGTACAAAT
TTCCATCTTCTCTGTGTGCTATTCTGGAATCAGAAAAGCAGCAAATATGGAAAAGCATTATGGCT
TCAATGAAATACTTAAGCATATCAATGAATTGCCATGAAAATTGATGTGGAAAGATATACTCTGCAAGGC
AGAAGCAATTTCTCTACAGATGGTAAAATGCAAGGAATTGCCACAAGCAGTCTGTGAGATCCTTGGGCTT
CAAGGCAGTGAAGTTACAACACCAGATTAGACGTTGGTGAAGACGAAAATGTTGTGATGACTCCTTGTG
CTACATCTGCATTTCAAAGTAATGCCTTGCCTACACTCTCTGCCAGTGGAGCCAGAAATGACAGCCCAAC
ACAGATACCAGTGTCTCAGATGTCTGCAGATTAACACCTGCA

ACGCGTACGCGGCCGCTCGAGCAGAACTCATCTCAGAAGAGGATCTGGCAGCAAATGATATCCTGGATT
ACAAGGATGACGACGATAAGGTTTAA

Protein Sequence: >RC205178 representing NM_022771
 Red=Cloning site Green=Tags(s)

MAAAGVVGKIIYEQEGVYIHSSCGKTNDQDGLISGILRVLEKDAEVIVDWRPLDDALDSSSILYARKDS
 SSVVETQAPKERGHRGSEHLNSYEAEDMVNTVSFKRKPHTNGDAPSHRNGKSKWSFLFSLTDLKSIKQ
 NKEGMGWSYLVFCLKDDVVLPAHFHQGDSKLLIESLEKYVVLCESPQDKRLLVNCQNKSLSQSFENLL
 DEPAYGLIQAGLLDRRLLWAIHHWKKIKKDPYATMIGFSKVTNYIFDSLGRSDPSTHQRPPEMADFL
 SDAIPGLKINQQEPEGFEVITRIDLGERPVVQRREPVSLEEWTKNIDSEGRILNVNMQMIFRGGLSHA
 LRKQAWKFLLYGFPWDSTKEERTQLQKQKTDEYFRMKLQWKSISQEQEKRSRLRDYRSLIEKDVNRTDR
 TNKFYEGQDNPLILLHDILMTYCMYDFDLGYVQGMSDLLSPLLYVMENEVDAFWCFASYMDQMHQNFEE
 QMQGMKTQLIQLSTLLRLLDSGFCSYLESQDSGYLYFCFRWLLIRFKREFSFLDILRLWEVMWTELPCTN
 FHLLCCAILSEKQQIMEKHYGFNEILKHINELSMKIDVEDILCKAEAISLQMVCKELPQAVCEILGL
 QGSEVTPDSVGEDENVVMTPCPTSAFQSNALPTLSASGARNDSPQIPVSSDVCRLTPA

TRTRPLEQKLISEEDLAANDILDYKDDDDKV

Chromatograms: https://cdn.origene.com/chromatograms/mk8079_a07.zip

Restriction Sites: Sgfl-MluI

Cloning Scheme:



ACCN: NM_022771

ORF Size: 2073 bp

OTI Disclaimer: Due to the inherent nature of this plasmid, standard methods to replicate additional amounts of DNA in E. coli are highly likely to result in mutations and/or rearrangements. Therefore, OriGene does not guarantee the capability to replicate this plasmid DNA. Additional amounts of DNA can be purchased from OriGene with batch-specific, full-sequence verification at a reduced cost. Please contact our customer care team at custsupport@origene.com or by calling 301.340.3188 option 3 for pricing and delivery.

The molecular sequence of this clone aligns with the gene accession number as a point of reference only. However, individual transcript sequences of the same gene can differ through naturally occurring variations (e.g. polymorphisms), each with its own valid existence. This clone is substantially in agreement with the reference, but a complete review of all prevailing variants is recommended prior to use. [More info](#)

OTI Annotation: This clone was engineered to express the complete ORF with an expression tag. Expression varies depending on the nature of the gene.

Components: The ORF clone is ion-exchange column purified and shipped in a 2D barcoded Matrix tube containing 10ug of transfection-ready, dried plasmid DNA (reconstitute with 100 ul of water).

Reconstitution Method:

1. Centrifuge at 5,000xg for 5min.
2. Carefully open the tube and add 100ul of sterile water to dissolve the DNA.
3. Close the tube and incubate for 10 minutes at room temperature.
4. Briefly vortex the tube and then do a quick spin (less than 5000xg) to concentrate the liquid at the bottom.
5. Store the suspended plasmid at -20°C. The DNA is stable for at least one year from date of shipping when stored at -20°C.

RefSeq: [NM_022771.5](#)

RefSeq Size: 3228 bp

RefSeq ORF: 2076 bp

Locus ID: 64786

UniProt ID: [Q8TC07](#)

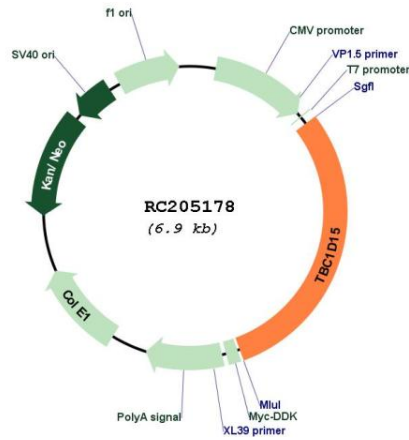
Cytogenetics: 12q21.1

Domains: TBC

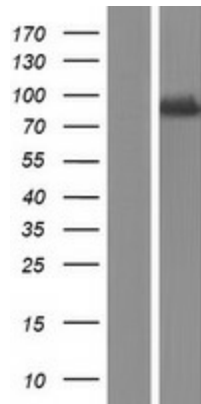
MW: 82 kDa

Gene Summary: This gene encodes a member of the Ras-like proteins in brain-GTPase activating protein superfamily that share a conserved Tre-2/Bub2/Cdc16 domain. The encoded protein interacts with Ras-like protein in brain 5A and may function as a regulator of intracellular trafficking. Alternate splicing results in multiple transcript variants. [provided by RefSeq, Apr 2009]

Product images:



Circular map for RC205178



Western blot validation of overexpression lysate (Cat# [LY411562]) using anti-DDK antibody (Cat# [TA50011-100]). Left: Cell lysates from untransfected HEK293T cells; Right: Cell lysates from HEK293T cells transfected with RC205178 using transfection reagent MegaTran 2.0 (Cat# [TT210002]).