

Product datasheet for **RC205176**

CEP76 (NM_024899) Human Tagged ORF Clone

Product data:

Product Type:	Expression Plasmids
Product Name:	CEP76 (NM_024899) Human Tagged ORF Clone
Tag:	Myc-DDK
Symbol:	CEP76
Synonyms:	C18orf9; HsT1705
Mammalian Cell Selection:	Neomycin
Vector:	pCMV6-Entry (PS100001)
E. coli Selection:	Kanamycin (25 ug/mL)



[View online »](#)

**ORF Nucleotide
Sequence:**

>RC205176 ORF sequence
 Red=Cloning site Blue=ORF Green=Tags(s)

TTTTGTAATACGACTCACTATAGGGCGGCCGGAATTCGTCGACTGGATCCGGTACCGAGGAGATCTGCC
 GCC**CGGATCGCC**

ATGTCGCTGCCTCCGAGAAAGCCTCCGAGCTGAAGCAGCTCATCCACCAGCAGCTGAGCAAGATGGATG
 TCCATGGTAGAATAAGAGAAATCCTTGCTGAGACTATACGGGAAGAATTGGCACCTGATCAACAGCATT
 ATCAACAGAAGATTTGATCAAAGCCCTTAGACGTCGAGGAATCATTGACGATGTGATGAAAGAACCTAAT
 TTTGTTACTGACAGTGTTGAGCAAGAACTCCCTTCCTCTCCAAAACAACCTATTTGTTTTGATAGACAAT
 CGACATTAATAAAAACTAATATTGATCCAACACGGAGGTATCTTTACCTCAGGTTTTGGGTGAAAAAGC
 TTTCTTGGAACTCTGCAAGAACCTGAGCCTTTACCTGGACAAGTTTGTCAACGTTTACTTTATGTTTA
 CATTATCGAAACCAACGTTTTCTGTTCTAAACCTGTTCCATGTGCCTGTGAACCAGATTTTCATGATGGCT
 TTTTACTTGAAGTACACAGAGAAAGCTTGGGTGATGGAAGTGAATGGCTGATTCACAACAATGTTATC
 AATAAGTGATCCAATTCATATGGTGCTAATCAAAACAGACATATTTGGTGAGACGACTTTAGTAGCATCA
 TATTTTCTGGAATGGCGATCGGTTTTGGGCTCAGAAAATGGAGTGACCAGTCTGACTGTGGAACCTATGG
 GTGTAGGCACAGAATCAAAGTTTCTGTGGGAATTTTAAATATAAAACTTGAAATGTATCCACCCTCAA
 TCAAACGTTATCTCAAGAAGTAGTGAACACACAGCTTGCTTTGGAACGTGAGAAAAGTGCAGAGAAAGAG
 CGATTATTTCTGTATATGCTAAGCAGTGGTGGAGAGAAATTTGCAAAATTCGACCCTCACACAACCTCAC
 GACTGGTTAAGATTTTGCACAGGATGAAAATGGGATAAATAGACCAGTCTGTTCTATGTTAAACCACT
 TCGAGCTGGACGGCTTCTTGATACTCCAAGGCAAGCAGCAAGATTTGTTAATGTCCTTGGTTATGAACGA
 GCCCTGTTATTGGAGGAGGAGGTAACAGGAGCAGTGGTGCACCTCTGCTGGCCTTCTCTGTAGAAACA
 AGGGTGACTGTGAAGATCACGCTAACCTTCTGTGCAGCCTTCTTCTTGGATATGGATTAGAAGCCTTTGT
 TTGTGTTGGGACCAAGGCAAAGGAGTACCTCATGCATGGGTTATGACTTGTGGAACCTGATGGGGCCATC
 ACTTTTTGGGAGAGTTTAAACAGGACACAGGTACATCCATAAACCTACCAATCCTGATGAACCTCCAGTTG
 CTGAACAGCCCAAACCACTGTACCCATATCGAACAATTGGTTGTGTTTTCAACCATCAGATGTTCTGGG
 AAATTGTCAACCCTCTGATGCAGTAGAAACCTGTGATTTGATTTGAACGATGAATCCAAATGGAACCC
 ATGAGTGAGGAAGCAATTAATCTGTGTGTCTCCTGGAGCTACAACATCCCTTCTCCCTTTCCACCTC
 TGTGTGCATCCACAATTGACGCGTCAGTAACAAGTAATGAAATGAAATGCAGCTGAGGCTCCTGGTGTC
 AGAACACAGGAAGGATCTTGGCCTCACTACTGTTTGGGAAGACCAGCTCTCCTACCTTTTATCACCAGCT
 TTGGCTTCTTATGAATTTGAGCGTACAACAAGTATATCAGCAGGCAATGAAGAATTTCAAGATGCCATAA
 GAAGGGCTGTACCTGATGGTCACACATTTAAAGGGTTCCAATACATTTTGTGTATAGAAATGCAAGACG
 TGCATTTGCCACATGTCTTCGATCTCCTTCTGTGAAGAAATAATCTGTTGCCGTGGAGACCAAGTGCGA
 CTGGCAGTTCTGTCCGAGTATTTACTTACCCTGAATCTGCATGTGCTGTTGGATCATGTTTGCTTGTA
 AATATCGCTCGGTATTA

AG**CGGACCG**ACGCGTACGCGGCCGCTCGAGCAGAAACTCATCTCAGAAGAGGATCTGGCAGCAAATGATATCC
 TGGATTACAAGGATGACGACGATAAGGTTTAA

Protein Sequence: >RC205176 protein sequence
Red=Cloning site Green=Tags(s)

```

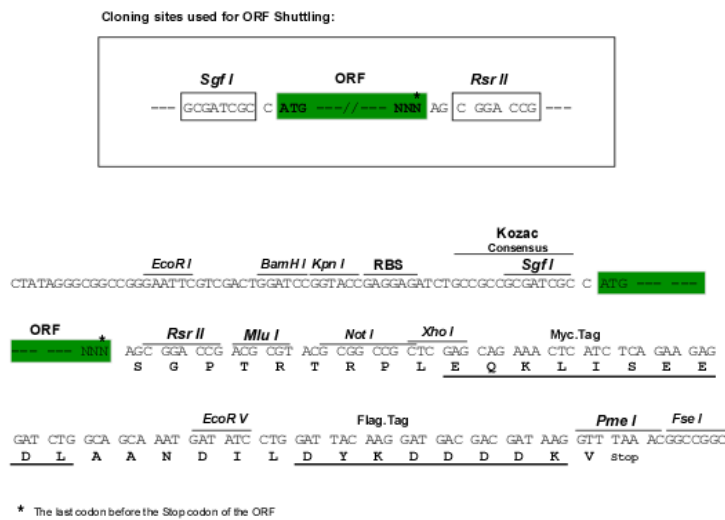
MSLPPEKASELKQLIHQQLSKMDVHGRIREILAETIREELAPDQQHLSTEDLIKALRRRGIIDDMKELN
FVTDSVEQELPSSPKQPICFDRQSTLKKTNIDPTRRYLYLQVLGGKAFLEHLQEPEPLPGQVCSTFTLCL
HYRNQFRFRSKVPVPCACEPDFHDFGLLEVHRESLGDGTRMADSTTMLSISDPIHMVLIKTDIFGETTLVAS
YFLEWRSVLGSENGVTSLTVELMGVGTESKVSVGILNIKLEMYPPLNQTLSQEVVNTQLALERQKTAEK
RLFLVYAKQWREYLQIRPSHNSRLVKIFAQDENGINRPVCSYVKPLRAGRLLDTPRQAARFVNVLGYER
APVIGGGGKQEQWCTLLAFLCRNKGDCEHDHANLLCSLLLGYGLEAFVVCVGTAKAGVPHAWMTCTGDGAI
TFWESLTGHRYIHKPTNPDEPPVAEQPKPLYPYRTIGCVFNHQMFLGNCQPSDAVETCVFDLNDESKWKP
MSEEAIKSVCAPGATTSLPPFPPLCASTIDASVTSNEIEMQLRLLVSEHRKDLGLTTVWEDQLSYLLSPA
LASYEFERTTSSISAGNEEFQDAIRRAVPDGHFTKGFPIHFVYRNARRAFATCLRSPFCEEIICCRGDQVR
LAVRVRVFTYPESACAVWIMFACKYRSVL
    
```

SGPTRTRPLEQKLI SEEDLAANDILDYKDDDDKV

Chromatograms: https://cdn.origene.com/chromatograms/mk6619_a12.zip

Restriction Sites: SgfI-RsrII

Cloning Scheme:



ACCN: NM_024899

ORF Size: 1977 bp

OTI Disclaimer: The molecular sequence of this clone aligns with the gene accession number as a point of reference only. However, individual transcript sequences of the same gene can differ through naturally occurring variations (e.g. polymorphisms), each with its own valid existence. This clone is substantially in agreement with the reference, but a complete review of all prevailing variants is recommended prior to use. [More info](#)

OTI Annotation: This clone was engineered to express the complete ORF with an expression tag. Expression varies depending on the nature of the gene.

Components: The ORF clone is ion-exchange column purified and shipped in a 2D barcoded Matrix tube containing 10ug of transfection-ready, dried plasmid DNA (reconstitute with 100 ul of water).

Reconstitution Method:

1. Centrifuge at 5,000xg for 5min.
2. Carefully open the tube and add 100ul of sterile water to dissolve the DNA.
3. Close the tube and incubate for 10 minutes at room temperature.
4. Briefly vortex the tube and then do a quick spin (less than 5000xg) to concentrate the liquid at the bottom.
5. Store the suspended plasmid at -20°C. The DNA is stable for at least one year from date of shipping when stored at -20°C.

RefSeq: [NM_024899.4](#)

RefSeq Size: 2947 bp

RefSeq ORF: 1980 bp

Locus ID: 79959

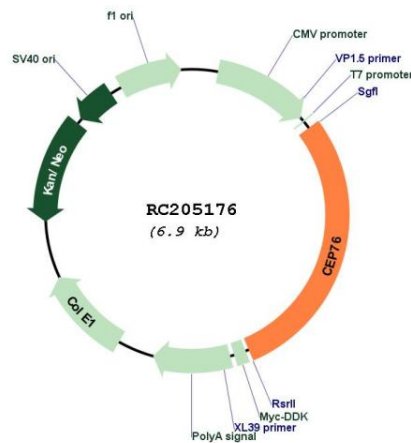
UniProt ID: [Q8TAP6](#)

Cytogenetics: 18p11.21

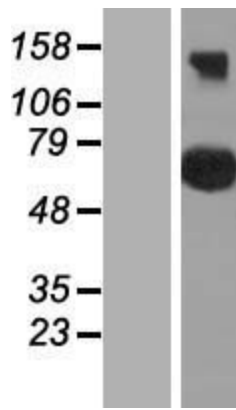
MW: 74.4 kDa

Gene Summary: This gene encodes a centrosomal protein which regulates centriole amplification by limiting centriole duplication to once per cell cycle. Alternative splicing results in multiple transcript variants. [provided by RefSeq, Dec 2012]

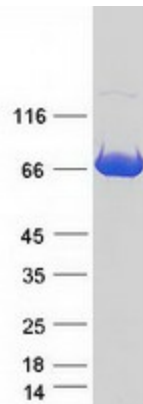
Product images:



Circular map for RC205176



Western blot validation of overexpression lysate (Cat# [LY411001]) using anti-DDK antibody (Cat# [TA50011-100]). Left: Cell lysates from untransfected HEK293T cells; Right: Cell lysates from HEK293T cells transfected with RC205176 using transfection reagent MegaTran 2.0 (Cat# [TT210002]).



Coomassie blue staining of purified CEP76 protein (Cat# [TP305176]). The protein was produced from HEK293T cells transfected with CEP76 cDNA clone (Cat# RC205176) using MegaTran 2.0 (Cat# [TT210002]).