

Product datasheet for **RC205173**

MANSC1 (NM_018050) Human Tagged ORF Clone

Product data:

Product Type:	Expression Plasmids
Product Name:	MANSC1 (NM_018050) Human Tagged ORF Clone
Tag:	Myc-DDK
Symbol:	MANSC1
Synonyms:	9130403P13Rik; LOH12CR3
Mammalian Cell Selection:	Neomycin
Vector:	pCMV6-Entry (PS100001)
E. coli Selection:	Kanamycin (25 ug/mL)



[View online »](#)

ORF Nucleotide Sequence:

>RC205173 ORF sequence
 Red=Cloning site Blue=ORF Green=Tags(s)

TTTTGTAATACGACTCACTATAGGGCGGCCGGAATTCGTCGACTGGATCCGGTACCGAGGAGATCTGCC
 GCC**CGCATCGCC**

ATGTTCTTCGGGGGAGAAGGGAGCTTGACTTACACTTTGGTAATAATTTGCTTCCTGACACTAAGGCTGT
 CTGCTAGTCAGAATTGCCTCAAAAAGAGTCTAGAAGATGTTGTCATTGACATCCAGTCATCTCTTTCTAA
 GGGAAATCAGAGGCAATGAGCCCATATACTTCAACTCAAGAAGACTGCATTAATTTCTTGCTGTTCAACA
 AAAACATATCAGGGGACAAAGCATGTAACCTGATGATCTTCGACACTCGAAAAACAGCTAGACAACCCA
 ACTGCTACCTATTTTTCTGTCCAACGAGGAAGCCTGTCCATTGAAACCAGCAAAAGGACTTATGAGTTA
 CAGGATAATTACAGATTTTCCATCTTTGACCAGAAATTTGCCAAGCCAAGAGTTACCCAGGAAGATTCT
 CTCTTACATGGCCAATTTTACAAGCAGTCACTCCCTAGCCCATCATCACAGATTATCAAAGCCCA
 CCGATATCTCATGGAGAGACACTTTTCTCAGAAGTTGGATCCTCAGATCACTTGGAGAACTATTTAA
 GATGGATGAAGCAAGTGCCAGCTCCTTGCTTATAAGGAAAAAGGCCATTCTCAGAGTTCACAATTTTCC
 TCTGATCAAGAAATAGCTCATCTGCTGCCTGAAAATGTGAGTGGCTCCAGCTACGGTGGCAGTTGCTT
 CTCCACATACCACCTCGGCTACTCCAAAGCCCGCCACCCTTCTACCCACCAATGCTTCAGTGACACCTTC
 TGGGACTTCCCAGCCACAGCTGGCCACCACAGCTCCACCTGTAACCAGTGTCACTTCTCAGCCTCCCACG
 ACCCTCATTTTCTACAGTTTTTACACGGGCTGCGGCTACACTCCAAGCAATGGCTACAACAGCAGTTCTGA
 CTACCACCTTTCAGGCACCTACGGACTCGAAAGGCAGCTTAGAAACCATACCGTTTACAGAAATCTCAA
 CCTAAGTTTGAACACAGGAATGTGATAACCCACTGCACTTTCTATGTCAAATGTGGAGTCTTCCACT
 ATGAATAAACTGCTTCTGGAAGGTAGGGAGGCCAGTCCAGGCAGTTCTCCAGGGCAGTGTCCAG
 AAAATCAGTACGGCCTTCCATTTGAAAAATGGCTTCTTATCGGGTCCCTGCTTTTTGGTGTCTGTTCTCT
 GGTGATAGGCCTCGTCTCTGGGTAGAATCCTCTCGGAATCACTCCGCAGGAAACGTTACTCAAGACTG
 GATTATTTGATCAATGGGATCTATGTGGACATC

ACGCGTACGCGGCCGCTCGAGCAGAAACTCATCTCAGAAGAGGATCTGGCAGCAAATGATATCCTGGATT
 ACAAGGATGACGACGATAAGGTTTAA

Protein Sequence:

>RC205173 protein sequence
 Red=Cloning site Green=Tags(s)

MFFGGEGSLTYTLVLIICFLTLRLSASQNCLKKSLEDVVIDIQSSLSKIRGNEPIYSTQEDCINSCCST
 KNISGDKACNLMIFDTRKTARQPNCYLFFCPNEEACPLKPAKGLMSYRIITDFPSLTRNLPSQELPQEDS
 LLHGQFSQAVTPLAHHHTDYSKPTDISWRDTLSQKFGSSDHLEKLFKMDEASAQLLAYKEKGHSQSSQFS
 SDQEIAHLLPENVSALPATVAVASPHTTSATPKPATLLPTNASVTPSGTSQPQLATTAPPVTTVTSQPPT
 TLIISTVFTRAAATLQAMATTAVLTTTFQAPTDSKGSLETIPFTEISNLTNLTGNVYNPTALSMSNVESST
 MNKTASWEGREASPGSSSQSVPENQYGLPFKWLWLLIGSLLFGVLFVIGLVLLGRILSESLRKRYSRL
 DYLINGIYVDI

TRTRPLEQKLISEEDLAANDILDYKDDDDKV

Chromatograms:

https://cdn.origene.com/chromatograms/mk6315_b10.zip

Restriction Sites:

SgfI-MluI

Cloning Scheme:


ACCN: NM_018050

ORF Size: 1293 bp

OTI Disclaimer: The molecular sequence of this clone aligns with the gene accession number as a point of reference only. However, individual transcript sequences of the same gene can differ through naturally occurring variations (e.g. polymorphisms), each with its own valid existence. This clone is substantially in agreement with the reference, but a complete review of all prevailing variants is recommended prior to use. [More info](#)

OTI Annotation: This clone was engineered to express the complete ORF with an expression tag. Expression varies depending on the nature of the gene.

Components: The ORF clone is ion-exchange column purified and shipped in a 2D barcoded Matrix tube containing 10ug of transfection-ready, dried plasmid DNA (reconstitute with 100 ul of water).

Reconstitution Method:

1. Centrifuge at 5,000xg for 5min.
2. Carefully open the tube and add 100ul of sterile water to dissolve the DNA.
3. Close the tube and incubate for 10 minutes at room temperature.
4. Briefly vortex the tube and then do a quick spin (less than 5000xg) to concentrate the liquid at the bottom.
5. Store the suspended plasmid at -20°C. The DNA is stable for at least one year from date of shipping when stored at -20°C.

RefSeq: [NM_018050.2](#), [NP_060520.2](#)

RefSeq Size: 2297 bp

RefSeq ORF: 1296 bp

Locus ID: 54682

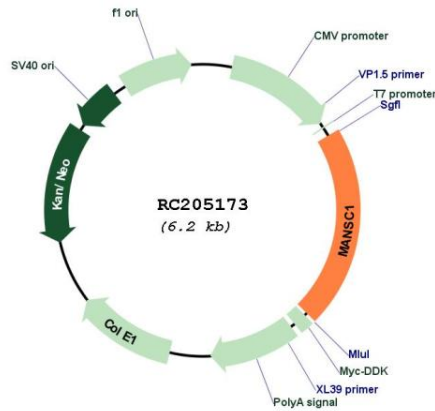
UniProt ID: [Q9H8J5](#)

Cytogenetics: 12p13.2

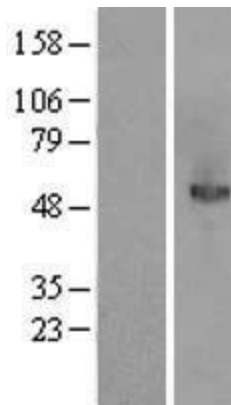
Protein Families: Transmembrane

MW: 46.8 kDa

Product images:



Circular map for RC205173



Western blot validation of overexpression lysate (Cat# [LY413360]) using anti-DDK antibody (Cat# [TA50011-100]). Left: Cell lysates from untransfected HEK293T cells; Right: Cell lysates from HEK293T cells transfected with RC205173 using transfection reagent MegaTran 2.0 (Cat# [TT210002]).