

## Product datasheet for **RC205171**

### **TMEM90B (SYNDIG1) (NM\_024893) Human Tagged ORF Clone**

#### Product data:

Product Type:	Expression Plasmids
Product Name:	TMEM90B (SYNDIG1) (NM_024893) Human Tagged ORF Clone
Tag:	Myc-DDK
Symbol:	TMEM90B
Synonyms:	C20orf39; DSPC2; IFITMD5; TMEM90B
Mammalian Cell Selection:	Neomycin
Vector:	pCMV6-Entry (PS100001)
E. coli Selection:	Kanamycin (25 ug/mL)
ORF Nucleotide Sequence:	>RC205171 ORF sequence Red=Cloning site Blue=ORF Green=Tags(s)

TTTTGTAATACGACTCACTATAGGGCGGCCGGAATTCGTCGACTGGATCCGGTACCGAGGAGATCTGCC  
GCC**CGATCGCC**

ATGGATGGCATCATTGAACAGAAGAGCATGCTGGTGCACAGTAAAATCAGTGATGCTGGCAAGAGGAATG  
GTTTAATTAACACCAGAACTTGATGGCCGAGAGCAGAGATGGTCTGGTGTCTGTTTACCAGCGCCCA  
GTACCAGAGCCACCGGTGGGGCCAGCACAGTGCCGGCCAGCCTGGACAGCAGCAGGAGTGAGCCGATG  
CAGCAGCTGCTGGACCCCAACACCCTGCAGCAGTCAGTGGAGTCCCGCTACCGGCCAACATCATCTCT  
ATTCAGAGGGCGTGCTGCGCTCCTGGGGGACGGTGTGGCCGCGACTGCTGCGAGACAACCTTCATCGA  
GGACCGGTGCGCCACCAAGACAGCCTCGAGTACCCGGATGGGAAGTTCATTGACCTCTCAGCTGATGAC  
ATAAAAATCCACACCCTGTCCTACGATGTGGAGGAGGAGGAGGAGTCCAGGAGCTGGAGAGCGACTACT  
CAAGCGACACAGAGAGTGAGGACAATTCCTCATGATGCCCCGCGGGACCACCTGGGCCTCAGTGTCTT  
CTCCATGCTCTGCTGCTTCTGGCCTCTGGGCATCGCAGCCTTCTACTTGTCCCATGAGACCAACAAGCC  
GTGGCCAAGGGGACTTGACCAGGCCAGCAGCTCCCGGGGGCCCTATTCTGGCAGTGCTGTCCA  
TCACCATGGGACTGGCGTCTATGTGGCGTGGCCGTGGCCCTCATCGCCTACCTCTCCAAGAACAACCA  
CTG

**ACGCGT**ACGCGGCCGCTCGAGCAGAACTCATCTCAGAAGAGGATCTGGCAGCAAATGATATCCTGGATT  
ACAAGGATGACGACGATAAGGTTTAA



[View online »](#)

**Protein Sequence:** >RC205171 protein sequence  
 Red=Cloning site Green=Tags(s)

MDGIIEQKSM LVH SKISDAGKR NGLINTRNLMAESRDGLVSVYPAPQYQSHRVGASTVPSLDSSRSEPM  
 QQLLDPNTLQQSVESRYRPNIILYSEGVLRSWGDGVAADCCE TTFIEDRSPTKDSLEYDPDGK FIDLSADD  
 IKIHTLSYDVEEEEEEFQELESDYSSDTESEDNFLMMPPRDHLGLSVFSMLCCFWPLGIAAFYLSHETNKA  
 VAKGDLHQASTSSRRALFLAVLSITIGTVVYVGVAVALIAYLSKNNHL

TRTRPLEQKLISEEDLAANDILDYKDDDDKV

**Chromatograms:** [https://cdn.origene.com/chromatograms/mk6313\\_a01.zip](https://cdn.origene.com/chromatograms/mk6313_a01.zip)

**Restriction Sites:** SgfI-MluI

**Cloning Scheme:**

Cloning sites used for ORF Shuttling:



\* The last codon before the Stop codon of the ORF

**ACCN:** NM\_024893

**ORF Size:** 774 bp

**OTI Disclaimer:** The molecular sequence of this clone aligns with the gene accession number as a point of reference only. However, individual transcript sequences of the same gene can differ through naturally occurring variations (e.g. polymorphisms), each with its own valid existence. This clone is substantially in agreement with the reference, but a complete review of all prevailing variants is recommended prior to use. [More info](#)

**OTI Annotation:** This clone was engineered to express the complete ORF with an expression tag. Expression varies depending on the nature of the gene.

**Components:** The ORF clone is ion-exchange column purified and shipped in a 2D barcoded Matrix tube containing 10ug of transfection-ready, dried plasmid DNA (reconstitute with 100 ul of water).

**Reconstitution Method:**

1. Centrifuge at 5,000xg for 5min.
2. Carefully open the tube and add 100ul of sterile water to dissolve the DNA.
3. Close the tube and incubate for 10 minutes at room temperature.
4. Briefly vortex the tube and then do a quick spin (less than 5000xg) to concentrate the liquid at the bottom.
5. Store the suspended plasmid at -20°C. The DNA is stable for at least one year from date of shipping when stored at -20°C.

**RefSeq:** [NM\\_024893.3](#)

**RefSeq Size:** 2523 bp

**RefSeq ORF:** 777 bp

**Locus ID:** 79953

**UniProt ID:** [Q9H7V2](#)

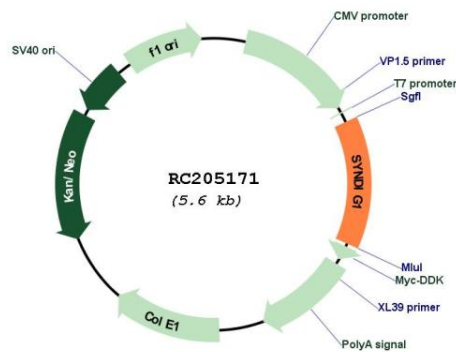
**Cytogenetics:** 20p11.21

**Protein Families:** Transmembrane

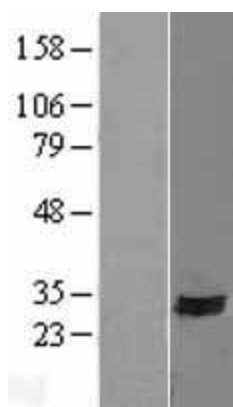
**MW:** 28.6 kDa

**Gene Summary:** This gene encodes a protein that belongs to the interferon-induced transmembrane family of proteins. A similar protein in rat is thought to regulate the development of excitatory synapses. [provided by RefSeq, Jul 2013]

## Product images:



Circular map for RC205171



Western blot validation of overexpression lysate (Cat# [LY410995]) using anti-DDK antibody (Cat# [TA50011-100]). Left: Cell lysates from untransfected HEK293T cells; Right: Cell lysates from HEK293T cells transfected with RC205171 using transfection reagent MegaTran 2.0 (Cat# [TT210002]).