

## Product datasheet for **RC205166**

### **GABA A Receptor beta 1 (GABRB1) (NM\_000812) Human Tagged ORF Clone**

#### **Product data:**

Product Type:	Expression Plasmids
Product Name:	GABA A Receptor beta 1 (GABRB1) (NM_000812) Human Tagged ORF Clone
Tag:	Myc-DDK
Symbol:	GABA A Receptor beta 1
Synonyms:	DEE45; EIEE45
Mammalian Cell Selection:	Neomycin
Vector:	pCMV6-Entry (PS100001)
E. coli Selection:	Kanamycin (25 ug/mL)



[View online »](#)

**ORF Nucleotide Sequence:**

>RC205166 representing NM\_000812  
 Red=Cloning site Blue=ORF Green=Tags(s)

TTTTGTAATACGACTCACTATAGGGCGGCCGGAATTCGTCGACTGGATCCGGTACCGAGGAGATCTGCC  
 GCC**CGGATCGCC**

ATGTGGACAGTACAAAATCGAGAGAGTCTGGGGCTTCTCTTTCCCTGTGATGATTACCATGGTCTGTT  
 GTGCACACAGCACCAATGAACCCAGCAACATGTCATACGTGAAAGAGACAGTGGACAGATTGCTCAAAGG  
 ATATGACATTCGCTTGCAGCCGGACTTCGAGGGCCCCCGTCGACGTTGGGATGCGGATCGATGTCGCC  
 AGCATAGACATGGTCTCCGAAGTGAATATGGATTATACACTCACCATGTATTTCCAGCAGTCTTGAAAG  
 ACAAAGGCTTTCTTATTCTGGAATCCCACTGAACCTCACCTAGACAATAGGGTAGCTGACCAACTCTG  
 TGTACCAGACACCTACTTCTGAATGACAAGAAATCATTTGTGCATGGGGTACAGTGAATAATCGAATG  
 ATTCGACTGCATCCTGATGGAACAGTTCTCTATGGACTCCGAATCACAACCACAGCTGCATGATGATGG  
 ATCTTCGAAGATATCCACTGGATGAGCAGAAGTGCACCCTGGAGATCGAAAGTTATGGCTATACCACTGA  
 TGACATTAATTTACTGGAATGGAGGAGAAGGGGCAGTCACTGGTGTAAATAAAATCGAACTTCTCAA  
 TTTTCAATTGTTGACTACAAGATGGTGTCTAAGAAGGTGGAGTTCACAACAGGAGCGTATCCACGACTGT  
 CACTAAGTTTTCGTCTAAAGAGAAACATTGGTTACTTCAATTTGCAAACCTACATGCCTTCTACACTGAT  
 TACAATTTCTGCTGGGTGTCTTTTGGATCAACTATGATGCATCTGCAGCCAGAGTGCCTAGGAATC  
 ACGACGGTGTACAATGACAACCATCAGCACCCCTCAGGGAGACCCTGCCAAAGATCCCTTATGTCA  
 AAGCGATTGATATTTATCTGATGGGTGGCTTGTGTTGTCTGGCTCTGCTGGAGTATGCCTTTGT  
 AAATTACATCTTCTTTGGAAAGGCCCTCAGAAAAGGGAGCTAGCAAACAAGACCAGAGTGCCAATGAG  
 AAGAATAAATGGAGATGAATAAAGTCCAGGTCGACGCCACGGTAACATTCTCCTCAGCACCCCTGGAAA  
 TCCGGAATGAGACGAGTGGCTCGGAAGTCTCAGAGCGTGAGCGACCCCAAGGCCACCATGTACTCCTA  
 TGACAGCGCCAGCATCCAGTACCGCAAGCCCTGAGCAGCCGCGAGGCCCTACGGGCGCGCCCTGGACCGG  
 CACGGGGTACCCAGCAAGGGGCGCAACCCGAGGGTGCCTCCCAGCTCAAAGTCAAGATCCCGACTTGA  
 CTGATGTGAATTCATAGACAAGTGGTCCCGAATGTTTTTCCCCATCACCTTTTCTTTTTAATGTCGT  
 CTATTGGCTTTACTATGTACAC

**ACGGTACGCGGCCGCTCGAGCAGAAACTCATCTCAGAAGAGGATCTGGCAGCAATGATATCCTGGATT  
 ACAAGGATGACGACGATAAGGTTTAA**

**Protein Sequence:**

>RC205166 representing NM\_000812  
 Red=Cloning site Green=Tags(s)

MWTVQNRESLGLLSFPVMITMVCCAHOSTNEPSNMSYVKETVDRLLKGYDIRLRPDFGGPPVDVGMRIDVA  
 SIDMVSEVNMDYTLTMYFQQSWKDKRLSYSGIPLNLTLDNRVADQLCVPDITYFLNDKKSFVHGVTVKNRM  
 IRLHPDGTVLYGLRITTTAACMMDLRRYPLDEQNCTLEIESYGYTTDDIEFYWNGGEGAVTGVNKIELPQ  
 FSIVDYKMVSKKVEFTTGAYPRLSLSFRLKRNIGYFILQTYMPSTLITILSWVSFWINYDASAARVALGI  
 TTVLTMTTISTHLRETLPKIPYVKAIDIYLMGCFVFLALLEYAFVNYIFFGKGPQKKGASKQDQSANE  
 KNKLEMNKVQVDAHGNILLSTLEIRNETSGSEVLTSSVDPKATMYSYDSASIQYRKPLSSREAYGRALDR  
 HGVPKGRNRRRASQLKVKIPDLTDVNSIDKWSRMFFPITFLFNVVYWLYYVH

**TRTRPLEQKLISEEDLAANDILDYKDDDDKV**

**Chromatograms:**

[https://cdn.origene.com/chromatograms/mg2423\\_a11.zip](https://cdn.origene.com/chromatograms/mg2423_a11.zip)

**Restriction Sites:**

Sgfl-Mlul

**Cloning Scheme:**


**ACCN:** NM\_000812

**ORF Size:** 1422 bp

**OTI Disclaimer:** The molecular sequence of this clone aligns with the gene accession number as a point of reference only. However, individual transcript sequences of the same gene can differ through naturally occurring variations (e.g. polymorphisms), each with its own valid existence. This clone is substantially in agreement with the reference, but a complete review of all prevailing variants is recommended prior to use. [More info](#)

**OTI Annotation:** This clone was engineered to express the complete ORF with an expression tag. Expression varies depending on the nature of the gene.

**Components:** The ORF clone is ion-exchange column purified and shipped in a 2D barcoded Matrix tube containing 10ug of transfection-ready, dried plasmid DNA (reconstitute with 100 ul of water).

**Reconstitution Method:**

1. Centrifuge at 5,000xg for 5min.
2. Carefully open the tube and add 100ul of sterile water to dissolve the DNA.
3. Close the tube and incubate for 10 minutes at room temperature.
4. Briefly vortex the tube and then do a quick spin (less than 5000xg) to concentrate the liquid at the bottom.
5. Store the suspended plasmid at -20°C. The DNA is stable for at least one year from date of shipping when stored at -20°C.

**Note:** Plasmids are not sterile. For experiments where strict sterility is required, filtration with 0.22um filter is required.

**RefSeq:** [NM\\_000812.4](#)

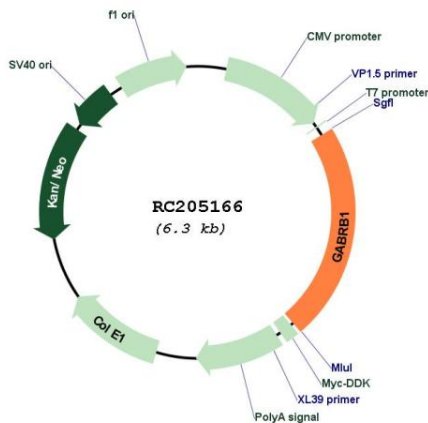
**RefSeq Size:** 1925 bp

**RefSeq ORF:** 1425 bp

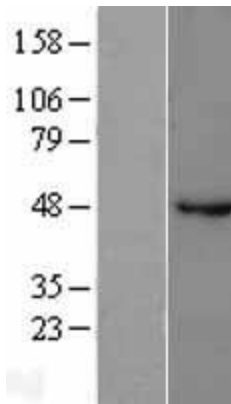
**Locus ID:** 2560

**UniProt ID:** [P18505](#)  
**Cytogenetics:** 4p12  
**Domains:** Neur\_chan\_memb, Neur\_chan\_LBD  
**Protein Families:** Druggable Genome, Ion Channels: Cys-loop Receptors, Transmembrane  
**Protein Pathways:** Neuroactive ligand-receptor interaction  
**MW:** 54.1 kDa  
**Gene Summary:** The gamma-aminobutyric acid (GABA) A receptor is a multisubunit chloride channel that mediates the fastest inhibitory synaptic transmission in the central nervous system. This gene encodes GABA A receptor, beta 1 subunit. It is mapped to chromosome 4p12 in a cluster comprised of genes encoding alpha 4, alpha 2 and gamma 1 subunits of the GABA A receptor. Alteration of this gene is implicated in the pathogenetics of schizophrenia. [provided by RefSeq, Jul 2008]

**Product images:**



Circular map for RC205166



Western blot validation of overexpression lysate (Cat# [LY400286]) using anti-DDK antibody (Cat# [TA50011-100]). Left: Cell lysates from untransfected HEK293T cells; Right: Cell lysates from HEK293T cells transfected with RC205166 using transfection reagent MegaTran 2.0 (Cat# [TT210002]).