

Product datasheet for RC205162

Angiotensin II Type 1 Receptor (AGTR1) (NM_009585) Human Tagged ORF Clone

Product data:

Product Type:	Expression Plasmids
Product Name:	Angiotensin II Type 1 Receptor (AGTR1) (NM_009585) Human Tagged ORF Clone
Tag:	Myc-DDK
Symbol:	Angiotensin II Type 1 Receptor
Synonyms:	AG2S; AGTR1B; AT1; AT1AR; AT1B; AT1BR; AT1R; AT2R1; HAT1R
Mammalian Cell Selection:	Neomycin
Vector:	pCMV6-Entry (PS100001)
E. coli Selection:	Kanamycin (25 ug/mL)
ORF Nucleotide Sequence:	>RC205162 ORF sequence Red=Cloning site Blue=ORF Green=Tags(s)

TTTTGTAATACGACTCACTATAGGGCGCCGGGAATTCGTCGACTGGATCCGGTACCGAGGAGATCTGCC
GCC**CGATCGCC**

ATGATTCTCAACTCTTCTACTGAAGATGGTATTAAGAATCCAAGATGATTGTCCCAAAGCTGGAAGGC
ATAATTACATATTTGTCATGATTCTACTTTATACAGTATCATCTTTGTGGTGGGAATATTTGGAAACAG
CTTGGTGGTGATAGTCATTTACTTTTATGAAGCTGAAGACTGTGGCCAGTGTCTTTCTTTGAATTTA
GCACTGGCTGACTTATGCTTTTACTGACTTTGCCACTATGGGCTGTCTACACAGCTATGGAATACCGCT
GGCCCTTTGGCAATTACCTATGTAAGATTGCTTCAGCCAGCGTCAGTTTCAACCTGTACGCTAGTGTGT
TCTACTCAGTGTCTCAGCATTGATCGATACCTGGCTATTGTTACCCCAATGAAGTCCCGCTTCGACGC
ACAATGCTGTAGCCAAAGTCACCTGCATCATCTTTGGCTGCTGGCAGGCTTGGCCAGTTTGGCAGCTA
TAATCCATCGAAATGATTTTTTATTGAGAACCAATATTACAGTTTGTCTTTCCATTATGAGTCCCA
AAATTCACCCCTCCGATAGGGCTGGCCCTGACCAAAAATACTGGGTTTCTGTTTCTTTTCTGATC
ATTCTTACAAGTTACTCTTATTTGGAAGCCGTAAGAAGGCTTATGAAATTCAGAAGAACAAACCA
GAAATGATGATATTTTAAAGATAATTGGAATTGTGCTTTTCTTTTCTTTTCTTTTCTGGATTCCCCACCA
AATATTCATTTTCTGGATGATTGATCAACTAGGCATCATACGTGACTGTAGAATTGCAGATATTGTG
GACACGGCCATGCCTATCACCATTTGTATAGCTTATTTTAAACAATTGCCTGAATCCTCTTTTATGGCT
TTCTGGGGAAAAATTTAAAGATATTTTCTCCAGCTTCTAAAATATATTTCCCCAAAAGCCAAATCCCA
CTCAAACCTTTTCAACAAAATGAGCAGCTTTCTACCGCCACTCAGATAATGTAAGCTCATCCACCAAG
AAGCTGCACCATGTTTTGAGTTGAG

ACGCGTACGCGGCCGCTCGAGCAGAAACTCATCTCAGAAGAGGATCTGGCAGCAATGATATCCTGGATT
ACAAGGATGACGACGATAAGGTTAA



[View online »](#)

Protein Sequence: >RC205162 protein sequence
Red=Cloning site Green=Tags(s)

```
MILNSSTEDGIKRIQDDCPKAGRHNHYIFVMIPTLYSIIIFVVGIFGNSLVVIVIIYFYMKLKTVASVFLNL
ALADLCFLLTLPLWAVYTAMEYRWPFGNYLCKIASASVSFNLVYASVLLTCLSIDRYLAIVHPMKSRLRR
TMLVAKVTCIIIWLLAGLASLPAIIHRNVFFIENTNITVCAFHYEQNSTLPIGLTKNILGFLFPFLI
ILTSTYTLIWKAVKKAYEIQKNKPRNDIDFKIIMAIIVLFFFVSWIPHQIFTFLDVLIQLGIIRDRIADIV
DTAMPITICIAFYNNCLNPLFYGFLLGKKFKRYFLQLLKYIPPKAKSHSNLSTKMSTLSYRHSNDVSSSTK
KPAPCFEVE
```

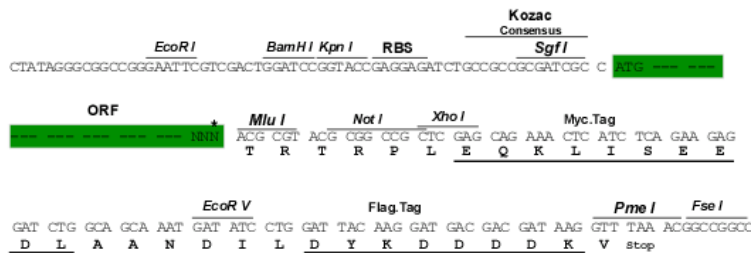
TRTRPLEQKLISEEDLAANDILDYKDDDDKV

Chromatograms: https://cdn.origene.com/chromatograms/mk6312_d03.zip

Restriction Sites: SgfI-MluI

Cloning Scheme:

Cloning sites used for ORF Shuttling:



* The last codon before the Stop codon of the ORF

ACCN: NM_009585

ORF Size: 1077 bp

OTI Disclaimer: The molecular sequence of this clone aligns with the gene accession number as a point of reference only. However, individual transcript sequences of the same gene can differ through naturally occurring variations (e.g. polymorphisms), each with its own valid existence. This clone is substantially in agreement with the reference, but a complete review of all prevailing variants is recommended prior to use. [More info](#)

OTI Annotation: This clone was engineered to express the complete ORF with an expression tag. Expression varies depending on the nature of the gene.

Components: The ORF clone is ion-exchange column purified and shipped in a 2D barcoded Matrix tube containing 10ug of transfection-ready, dried plasmid DNA (reconstitute with 100 ul of water).

Reconstitution Method:

1. Centrifuge at 5,000xg for 5min.
2. Carefully open the tube and add 100ul of sterile water to dissolve the DNA.
3. Close the tube and incubate for 10 minutes at room temperature.
4. Briefly vortex the tube and then do a quick spin (less than 5000xg) to concentrate the liquid at the bottom.
5. Store the suspended plasmid at -20°C. The DNA is stable for at least one year from date of shipping when stored at -20°C.

RefSeq: [NM_009585.4](#)

RefSeq Size: 2278 bp

RefSeq ORF: 1080 bp

Locus ID: 185

UniProt ID: [P30556](#)

Cytogenetics: 3q24

Domains: 7tm_1

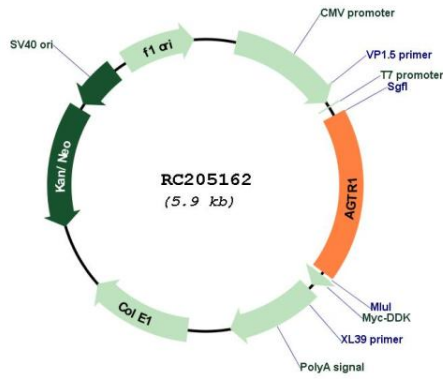
Protein Families: Druggable Genome, GPCR, Transmembrane

Protein Pathways: Calcium signaling pathway, Neuroactive ligand-receptor interaction, Renin-angiotensin system, Vascular smooth muscle contraction

MW: 41.1 kDa

Gene Summary: Angiotensin II is a potent vasopressor hormone and a primary regulator of aldosterone secretion. It is an important effector controlling blood pressure and volume in the cardiovascular system. It acts through at least two types of receptors. This gene encodes the type 1 receptor which is thought to mediate the major cardiovascular effects of angiotensin II. This gene may play a role in the generation of reperfusion arrhythmias following restoration of blood flow to ischemic or infarcted myocardium. It was previously thought that a related gene, denoted as AGTR1B, existed; however, it is now believed that there is only one type 1 receptor gene in humans. Alternative splicing of this gene results in multiple transcript variants. [provided by RefSeq, Aug 2020]

Product images:



Circular map for RC205162