

Product datasheet for **RC205156**

TSEN2 (NM_025265) Human Tagged ORF Clone

Product data:

| | |
|---------------------------|--|
| Product Type: | Expression Plasmids |
| Product Name: | TSEN2 (NM_025265) Human Tagged ORF Clone |
| Tag: | Myc-DDK |
| Symbol: | TSEN2 |
| Synonyms: | PCH2B; SEN2; SEN2L |
| Mammalian Cell Selection: | Neomycin |
| Vector: | pCMV6-Entry (PS100001) |
| E. coli Selection: | Kanamycin (25 ug/mL) |



[View online »](#)

ORF Nucleotide Sequence:

>RC205156 ORF sequence
 Red=Cloning site Blue=ORF Green=Tags(s)

TTTTGTAATACGACTCACTATAGGGCGGCCGGAATTCGTCGACTGGATCCGGTACCGAGGAGATCTGCC
 GCC**CGCATCGCC**

ATGGCAGAAGCAGTTTTCCATGCCCCAAAGAGGAAAAGAAGAGTGTATGAGACTTACGAGTCTCCATTGC
 CAATCCCTTTTGGTCAGGACCATGGTCCTGAAAGAATCAAGATATTCGTCGCTGAAATGATTAACAA
 CAATGTGATTGTGAGGAATGCGGAGGACATTGAGCAGCTCTATGGGAAAGGTTATTTTGGAAAAGGTATT
 CTTTCAAGAAGCCGTCCAAGCTTACAATTTAGATCCTAACTGGTTGCTAAATGGAAAGATATGAAGA
 CAAACATGCCTATCATCACATCAAAGAGGTATCAGCATAGTGTGAGTGGGCAGCAGAGCTGATGCGTAG
 ACAGGGGCAGGATGAGAGTACAGTGCAGCAATCCTCAAGGATTACACGAAACCGCTTGAGCATCCTCCT
 GTGAAAAGGAATGAAGAGGCTCAAGTGCATGACAAGCTTAACTCTGGAATGGTTTCCAACATGGAAGGCA
 CAGCAGGGGGAGAGAGACCTTCTGTGGTAAACGGGGACTCTGAAAGTCAGGTGGTGTGGGTGATCCCCG
 TGAGCCATTAGGCTGCCTGCAGGAGGGCTCTGGCTGCCACCAACAACAGAGAGCTTTGAGAAAAGCGTG
 CGAGAGGATGCCTCACCTCTGCCCATGTCTGTTGCTGCAACAAGATGCTCTCATCCTCCAGCGTGGCC
 TTCATCATGAAGACGGCAGCCAGCACATCGGCCTCCTGCATCCTGGGGACAGAGGGCCTGACCATGAGTA
 CGTGTGGTTCGAGGAAGCGGAGTGTGCCATGAGCGAGAGGGAGGCTGCCCAAAATGAGGAATTTGGTCAA
 AGAAACAGGTTAATATGCAGAAGAAATCCATATAGGATCTTTGAGTATTTGCAACTCAGCCTAGAAGAGG
 CCTTTTCTTGGTCTATGCTCTGGGATGTTAAGTATTTACTATGAGAAGGAGCCTTTAACGATAGTGAA
 GCTCTGAAAAGCTTTCACTGTAGTTCAGCCACGTTTCAAGACCTACATGGCCTACCATTACTTTTGA
 AGCAAGGGCTGGTGGCCAAAGTGGGACTCAAGTACGGGACAGATTTACTGCTATATCGAAAGGCCCTC
 CATTTTACCATGCAAGTTATTCTGTCTATTATCGAGCTAGTTGATGACCATTTTGAAGGCTCTCCGCGAG
 GCCTCTCAGTTGGAAGTCCCTGGCTGCCTTGAAGCAGAGTTTCCGTTAATGTCTCTAAGGAACCTTATGCTG
 TGCTATTTGATTAACCCCTACTATGACTGACAAAGAAATGGAGTCACCAGAATGTATGAAAAGGATTA
 AAGTTCAGGAGGTGATTCTGAGTCGATGGGTTTCTTACGAGAGAGGAGTGACCAAGACGATCTT

ACGCGTACGCGGCCGCTCGAGCAGAACTCATCTCAGAAGAGGATCTGGCAGCAAATGATATCCTGGATT
 ACAAGGATGACGACGATAAGGTTTAA

Protein Sequence:

>RC205156 protein sequence
 Red=Cloning site Green=Tags(s)

MAEAVFHAPKRKRVRVYETYESPLPIPFQDGHGPKLKEFKIFRAEMINNNVIVRNAEDIEQLYKGYFGKGI
 LSRSRPSFTISDPKLVAKWKDMKTNMPIITSKRYQHSVEWAAELMRRQGQDESTVRRILKDYTKPLEHPP
 VKRNEEAQVHDKLNSGMVSNMEGTAGGERPSVNVNGDSGKSGGVGDPREPLGCLQEGSGCHPTTESFEKSV
 REDASPLPHVCCCKQDALILQRGLHHEDGSQHIIGLLHPGDRGPDHEYVLVEEAECAMSEREAPNEELVQ
 RNRLICRRNPYRIFEYLQLSLEEAFFLVYALGCLSIYYEKEPLTIVKLWKAFTVVQPTFRTTYMAYHYFR
 SKGWPKVGLKYGTDLNLLYRKGPPFYHASYSVIEELVDDHFEGSLRRPLSWKSLAALSRVSVNVSKELML
 CYLIKPSTMTDKEMESPECMKRIKVQEVILSRVSSRERSDQDDL

TRTRPLEQKLISEEDLAANDILDYKDDDDKV

Chromatograms:

https://cdn.origene.com/chromatograms/mk6709_a06.zip

Restriction Sites:

Sgfl-Mlul

Cloning Scheme:


ACCN: NM_025265

ORF Size: 1395 bp

OTI Disclaimer: The molecular sequence of this clone aligns with the gene accession number as a point of reference only. However, individual transcript sequences of the same gene can differ through naturally occurring variations (e.g. polymorphisms), each with its own valid existence. This clone is substantially in agreement with the reference, but a complete review of all prevailing variants is recommended prior to use. [More info](#)

OTI Annotation: This clone was engineered to express the complete ORF with an expression tag. Expression varies depending on the nature of the gene.

Components: The ORF clone is ion-exchange column purified and shipped in a 2D barcoded Matrix tube containing 10ug of transfection-ready, dried plasmid DNA (reconstitute with 100 ul of water).

Reconstitution Method:

1. Centrifuge at 5,000xg for 5min.
2. Carefully open the tube and add 100ul of sterile water to dissolve the DNA.
3. Close the tube and incubate for 10 minutes at room temperature.
4. Briefly vortex the tube and then do a quick spin (less than 5000xg) to concentrate the liquid at the bottom.
5. Store the suspended plasmid at -20°C. The DNA is stable for at least one year from date of shipping when stored at -20°C.

RefSeq: [NM_025265.4](#)

RefSeq Size: 2402 bp

RefSeq ORF: 1398 bp

Locus ID: 80746

UniProt ID: [Q8NCE0](#)

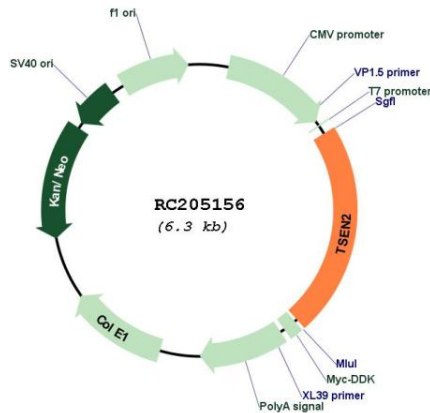
Cytogenetics: 3p25.2

Domains: tRNA_int_endo

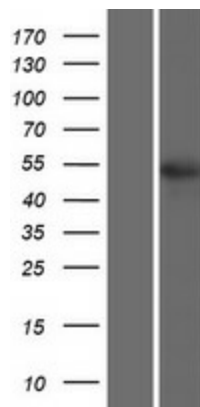
MW: 53.2 kDa

Gene Summary: This gene encodes one of the subunits of the tRNA splicing endonuclease. This endonuclease catalyzes the first step in RNA splicing which is the removal of introns. Mutations in this gene have been associated with pontocerebellar hypoplasia type 2. A pseudogene has been identified on chromosome 4. Multiple transcript variants encoding different isoforms have been found for this gene.[provided by RefSeq, Feb 2009]

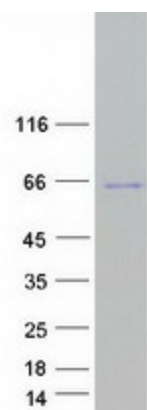
Product images:



Circular map for RC205156



Western blot validation of overexpression lysate (Cat# [LY428856]) using anti-DDK antibody (Cat# [TA50011-100]). Left: Cell lysates from untransfected HEK293T cells; Right: Cell lysates from HEK293T cells transfected with [RC226917] using transfection reagent MegaTran 2.0 (Cat# [TT210002]).



Coomassie blue staining of purified TSEN2 protein (Cat# [TP305156]). The protein was produced from HEK293T cells transfected with TSEN2 cDNA clone (Cat# RC205156) using MegaTran 2.0 (Cat# [TT210002]).