

Product datasheet for **RC205155**

OLIG1 (NM_138983) Human Tagged ORF Clone

Product data:

Product Type: Expression Plasmids
 Product Name: OLIG1 (NM_138983) Human Tagged ORF Clone
 Tag: Myc-DDK
 Symbol: OLIG1
 Synonyms: BHLHB6; BHLHE21
 Mammalian Cell Selection: Neomycin
 Vector: pCMV6-Entry (PS100001)
 E. coli Selection: Kanamycin (25 ug/mL)
 ORF Nucleotide Sequence: >RC205155 representing NM_138983
 Red=Cloning site Blue=ORF Green=Tags(s)

TTTTGTAATACGACTCACTATAGGGCGGCCGGAATTCGTCGACTGGATCCGGTACCGAGGAGATCTGCC
 GCC**CGATCGCC**

ATGTAATATGCGGTTTCCAGGCGCGGTGAACGCGGTCCCCGGGACCATGCTGCGGCCACAGCGGCCCG
 GAGACTTGCAGCTCGGGCCTCCCTCTACGAGCTGGTGGGCTACAGGCAGCCGCCCTCTCTCTCTCT
 CTCCACCTCTCCACCTCTCCACTTCTCTCTCTCCACGACGGCCCCCTCTCCCAAGGCTGCGCGC
 GAGAAGCCGGAGGCGCCGCGGAGCCTCCAGGCCCGGGCCGGGTGAGGCGCGCACCCGGGCGGACGCG
 CCCGGCCGGACGCCAAGGAGGAGCAGCAGCAGCTGCGGCGCAAGATCAACAGCCGCGAGCGGAAGCG
 CATGCAGGACCTGAACCTGGCCATGGACGCCCTGCGCGAGGTATCCTGCCTACTCAGCGCGCACTGC
 CAGGGCGCGCCCGCCGCAAGCTCTCAAGATAGCCACGCTGCTGCTCGCCCGCAACTACATCTACTGC
 TGGGCAGCTCGCTGCAGGAGCTGCGCCGCGCGTGGGCGAGGGCGCCGGGCCCGCCGCGCCGCGCTGCT
 GCTGGCCGGGCTGCCCTGCTCGCCGCGCGCCGGCTCCGTGCTGCTGGCGCCCGGCGCCGTAGGACCC
 CCCGACGCGTGCGCCCGCCAAGTACCTGTGCTGGCGTGGACGAGCCGCGTGCAGCCAGTTTCGCTC
 TCCCCGGCGGCGCAGGCGGCCCGGCTCTGCACCTGCGCCGTGTGCAAGTTCCCGCACCTGGTCCC
 GGCCAGCTGGGCTGGCCGCGTGCAGGCGCAATTCTCAAG

ACGCGTACGCGGCCGCTCGAGCAGAACTCATCTCAGAAGAGGATCTGGCAGCAAATGATATCCTGGATT
 ACAAGGATGACGACGATAAGGTTTAA



[View online »](#)

Protein Sequence: >RC205155 representing NM_138983
 Red=Cloning site Green=Tags(s)

MYAVSQARVNAVPGTMLRPQRPGLQLGASLYELVGYRQPPSSSSSSTSSTSSSSSTTAPLLPKAAR
 EKPEAPAEPPGPGSGAHPGGSARPDAAKEEQQLRRKINSRERKRMQDLNLAMDALREVILPYSAHC
 QGAPGRKLSKIATLLLLARNYILLGSSLQELRRALGEGAGPAAPRLLLAGLPLLAAPGSVLLAPGAVGP
 PDALRPAKYLSLALDEPPCGQFALPGGGAGGPGLECTCAVCKFPHLVPASLGLAAVQAQFSK

TRTRPLEQKLISEEDLAANDILDYKDDDDKV

Restriction Sites: SgfI-MluI

Cloning Scheme:

Cloning sites used for ORF Shuttling:



* The last codon before the Stop codon of the ORF

ACCN: NM_138983

ORF Size: 813 bp

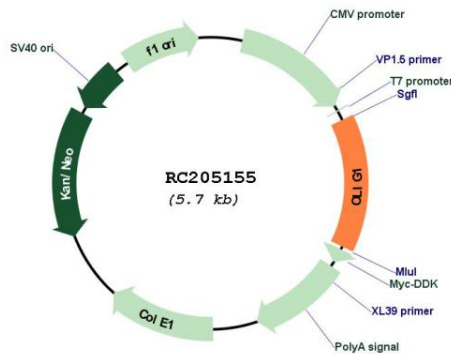
OTI Disclaimer: Due to the inherent nature of this plasmid, standard methods to replicate additional amounts of DNA in E. coli are highly likely to result in mutations and/or rearrangements. Therefore, OriGene does not guarantee the capability to replicate this plasmid DNA. Additional amounts of DNA can be purchased from OriGene with batch-specific, full-sequence verification at a reduced cost. Please contact our customer care team at custsupport@origene.com or by calling 301.340.3188 option 3 for pricing and delivery.

The molecular sequence of this clone aligns with the gene accession number as a point of reference only. However, individual transcript sequences of the same gene can differ through naturally occurring variations (e.g. polymorphisms), each with its own valid existence. This clone is substantially in agreement with the reference, but a complete review of all prevailing variants is recommended prior to use. [More info](#)

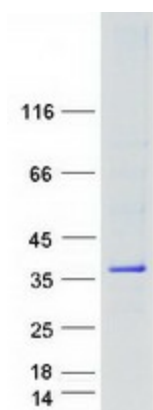
OTI Annotation: This clone was engineered to express the complete ORF with an expression tag. Expression varies depending on the nature of the gene.

- Components:** The ORF clone is ion-exchange column purified and shipped in a 2D barcoded Matrix tube containing 10ug of transfection-ready, dried plasmid DNA (reconstitute with 100 ul of water).
- Reconstitution Method:**
1. Centrifuge at 5,000xg for 5min.
 2. Carefully open the tube and add 100ul of sterile water to dissolve the DNA.
 3. Close the tube and incubate for 10 minutes at room temperature.
 4. Briefly vortex the tube and then do a quick spin (less than 5000xg) to concentrate the liquid at the bottom.
 5. Store the suspended plasmid at -20°C. The DNA is stable for at least one year from date of shipping when stored at -20°C.
- RefSeq:** [NM_138983.3](#)
- RefSeq Size:** 2293 bp
- RefSeq ORF:** 816 bp
- Locus ID:** 116448
- UniProt ID:** [Q8TAK6](#)
- Cytogenetics:** 21q22.11
- Protein Families:** Druggable Genome
- MW:** 27.9 kDa
- Gene Summary:** Promotes formation and maturation of oligodendrocytes, especially within the brain. Cooperates with OLIG2 to establish the pMN domain of the embryonic neural tube (By similarity).[UniProtKB/Swiss-Prot Function]

Product images:



Circular map for RC205155



Coomassie blue staining of purified OLIG1 protein (Cat# [TP305155]). The protein was produced from HEK293T cells transfected with OLIG1 cDNA clone (Cat# RC205155) using MegaTran 2.0 (Cat# [TT210002]).