

Product datasheet for RC205142

FIBIN (NM_203371) Human Tagged ORF Clone

Product data:

Product Type: Expression Plasmids
 Product Name: FIBIN (NM_203371) Human Tagged ORF Clone
 Tag: Myc-DDK
 Symbol: FIBIN
 Mammalian Cell Selection: Neomycin
 Vector: pCMV6-Entry (PS100001)
 E. coli Selection: Kanamycin (25 ug/mL)
 ORF Nucleotide Sequence: >RC205142 ORF sequence
 Red=Cloning site Blue=ORF Green=Tags(s)

TTTTGTAATACGACTCACTATAGGGCGGCCGGAATTCGTCGACTGGATCCGGTACCGAGGAGATCTGCC
 GCC**CGATCGCC**

ATGGTGTTTCTGAAGTTCTTCTGCATGAGTTTCTTCTGCCACCTGTGTCAAGGCTACTTCGATGGCCCC
 TCTACCCAGAGATGTCCAATGGGACTCTGCACCACTACTTCGTGCCCGATGGGGACTATGAGGAGAACGA
 TGACCCCGAGAAGTGCCAGCTGCTCTTCAGGGTGAGTGACCACAGGCGCTGCTCCAGGGGGAGGGGAGC
 CAGGTTGGCAGCCTGCTGAGCCTCACCTGCGGGAGGAGTTCACCGTGTGGGCCCCAGGTGGAGGATG
 CTGGGCGCGTGTGGAGGGCATCAGAAAAGCATCTCTACGACCTAGACGGGGAAGAGAGCTATGGCAA
 GTACCTGCGGCGGGAGTCCCACCAGATCGGGGATGCCTACTCCAACCTCGGACAAAATCCCTCACTGAGCTG
 GAGAGCAAGTTCAAGCAGGGCCAGGAACAGGACAGCCGGCAGGAGAGCAGGCTCAACGAGGACTTCTGG
 GAATGCTGGTCCACACAGGTCCTGCTGAAGGAGACTGGACATCTCTGTGGGCTCAGGGACAAATA
 CGAGCTGCTGGCCCTCACCATTAGGAGCCATGGGACCCGACTAGGTGGCTGAAAATGATTATCTTAA
 GTA

ACGCGTACGCGGCCGCTCGAGCAGAACTCATCTCAGAAGAGGATCTGGCAGCAAATGATATCTGGATT
 ACAAGGATGACGACGATAAGGTTTAA

Protein Sequence: >RC205142 protein sequence
 Red=Cloning site Green=Tags(s)

MVFLKFFCMSFFCHLCQGYFDGPLYPEMSNGTLHHYFVPDGDYEENDDPEKQLLFRVSDHRRCSQGEQS
 QVGSLLSLTLREEFTVLGRQVEDAGRVLEGISKISISYDLGDEESYGKYLRRSHQIGDAYSNSDKSLTEL
 ESKFKQGEQDSRQESRLNEDFLGMLVHTRSLKETLDISVGLRDKYELLALTIRSHGTRLGRLKNDYLK
 V

TRTRPLEQKLISEEDLAANDILDYKDDDDKV



Chromatograms: https://cdn.origene.com/chromatograms/mk6326_e01.zip

Restriction Sites: SgfI-MluI

Cloning Scheme:



ACCN: NM_203371

ORF Size: 633 bp

OTI Disclaimer: The molecular sequence of this clone aligns with the gene accession number as a point of reference only. However, individual transcript sequences of the same gene can differ through naturally occurring variations (e.g. polymorphisms), each with its own valid existence. This clone is substantially in agreement with the reference, but a complete review of all prevailing variants is recommended prior to use. [More info](#)

OTI Annotation: This clone was engineered to express the complete ORF with an expression tag. Expression varies depending on the nature of the gene.

Components: The ORF clone is ion-exchange column purified and shipped in a 2D barcoded Matrix tube containing 10ug of transfection-ready, dried plasmid DNA (reconstitute with 100 ul of water).

Reconstitution Method:

1. Centrifuge at 5,000xg for 5min.
2. Carefully open the tube and add 100ul of sterile water to dissolve the DNA.
3. Close the tube and incubate for 10 minutes at room temperature.
4. Briefly vortex the tube and then do a quick spin (less than 5000xg) to concentrate the liquid at the bottom.
5. Store the suspended plasmid at -20°C. The DNA is stable for at least one year from date of shipping when stored at -20°C.

RefSeq: [NM_203371.2](#)

RefSeq Size: 3024 bp

RefSeq ORF: 636 bp

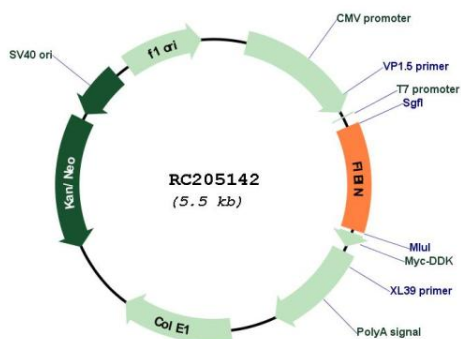
Locus ID: 387758

UniProt ID: Q8TAL6

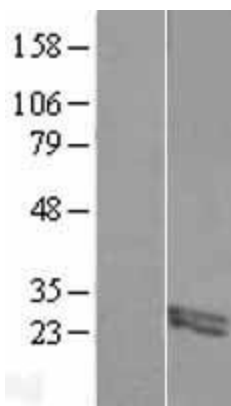
Cytogenetics: 11p14.2

MW: 24.3 kDa

Product images:



Circular map for RC205142



Western blot validation of overexpression lysate (Cat# [LY404306]) using anti-DDK antibody (Cat# [TA50011-100]). Left: Cell lysates from untransfected HEK293T cells; Right: Cell lysates from HEK293T cells transfected with RC205142 using transfection reagent MegaTran 2.0 (Cat# [TT210002]).