

Product datasheet for **RC205141**

IFNAR1 (NM_000629) Human Tagged ORF Clone

Product data:

Product Type:	Expression Plasmids
Product Name:	IFNAR1 (NM_000629) Human Tagged ORF Clone
Tag:	Myc-DDK
Symbol:	IFNAR1
Synonyms:	AVP; IFN-alpha-REC; IFNAR; IFNBR; IFRC
Mammalian Cell Selection:	Neomycin
Vector:	pCMV6-Entry (PS100001)
E. coli Selection:	Kanamycin (25 ug/mL)



[View online »](#)

ORF Nucleotide Sequence:

>RC205141 ORF sequence
 Red=Cloning site Blue=ORF Green=Tags(s)

TTTTGTAATACGACTCACTATAGGGCGGCCGGAATTCGTCGACTGGATCCGGTACCGAGGAGATCTGCC
 GCC**CGCATCGCC**

ATGATGGTCGTCCTCTGGGCGCGACACCTAGTGCTCGTCGCCGTGGCGCCATGGGTGTGTCCGCAG
 CCGCAGGTGGAATAAATCTAAAATCTCCTCAAAAAGTAGAGGTCGACATCATAGATGACAACTTTATCCT
 GAGGTGGAACAGGAGCGATGAGTCTGTCGGAATGTGACTTTTTTCATTTCGATTATCAAAAACTGGGATG
 GATAATTGGATAAAAATTGTCTGGGTGTCAGAATATTACTAGTACCAAATGCAACTTTTCTCACTCAAGC
 TGAATGTTTATGAAGAAATTAATTTGCGTATAAGAGCAGAAAAAGAAAACACTTCTTCATGGTATGAGGT
 TGACTCATTTACACCATTTGCGAAAGCTCAGATTGGTCTCCAGAAGTACATTTAGAAGCTGAAGATAAG
 GCAATAGTGATACACATCTCTCCTGGAACAAAAGATAGTGTATGTGGGCTTTGGATGGTTAAGCTTTA
 CATATAGCTTAGTTATCTGGAAAACTCTCAGGTGTAGAAGAAAGGATTGAAAAATTTTATTCCAGACA
 TAAAATTTATAAACTCTACCAGAGACTACTTATTGTCTAAAAGTTAAAGCAGCACTACTTACGTCATGG
 AAAATTTGGTGTCTATAGTCCAGTACATTGTATAAAGACCAGATTGAAAAATGAACTACCTCCACCAGAAA
 ATATAGAAGTCAGTGCCAAAATCAGAACTATGTTCTTAAATGGGATTATACATATGCAAAACATGACCTT
 TCAAGTTCAGTGGCTCCACGCCTTTTTAAAAAGGAATCCTGGAACCATTGTATAAATGGAACAAATA
 CCTGACTGTGAAAATGTCAAACTACCCAGTGTGTCTTTCCTCAAAACGTTTTCCAAAAGGAATTTACC
 TTCTCCGCGTACAAGCATCTGATGGAAATAACACATCTTTTTGGTCTGAAGAGATAAAGTTTGATACTGA
 AATAACAAGCTTTCCTACTTCTCCAGTCTTAAACATTAGATCCCTTAGTGATTTCATCCATATCTATATC
 GGTGCTCCAAAACAGTCTGGAACACGCCTGTGATCCAGGATTATCCACTGATTTATGAAATTTTTTT
 GGGAAAACACTTCAAATGCTGAGAGAAAAATTATCGAGAAAAAACTGATGTTACAGTTCCTAATTTGAA
 ACCACTGACTGTATATTGTGTGAAAGCCAGAGCACACACCATGGATGAAAAGCTGAATAAAAAGCAGTGTT
 TTTAGTGACGCTGTATGTGAGAAAAAAAACCAGGAAATACCTCTAAAATTTGGCTTATAGTTGGAATTT
 GTATTGCATTATTTGCTCTCCGTTTGTCTTTATGCTGCGAAAGTCTTCTTGAGATGCATCAATTATGT
 CTTCTTTCCATCACTTAAACCTTCTCCAGTATAGATGAGTATTTCTCTGAACAGCCATTGAAGAATCTT
 CTGCTTTCAACTTCTGAGGAACAAATCGAAAAATGTTTCATAATTGAAAAATAAGCACAAATTGCTACAG
 TAGAAGAACTAATCAAAGTATGAAGATCATAAAAAATACAGTTCCTCAAACTAGCCAAGATTGAGGAAA
 TTATTCTAATGAAGATGAAAGCGAAAGTAAAACAAGTGAAGAAGTACAGCAGGACTTTGTA

**ACGCGTACGCGGCCGCTCGAGCAGAACTCATCTCAGAAGAGGATCTGGCAGCAAATGATATCCTGGATT
 ACAAGGATGACGACGATAAGGTTTAA**

Protein Sequence:

>RC205141 protein sequence
 Red=Cloning site Green=Tags(s)

MMVLLGATTLVLVAVAPWVLSAAAGGKNLKSPQKVEVDIIDDNFILRWNRSDSVGNVTFSDYQKTGM
 DNWIKLSGCQNITSTKCNFSSLKLNVEEIKLRIRAEKENTSSWYEVDSFTPRKAQIGPPEVHLEAEDK
 AIVIHISPGTKDSVMWALDGLSFTYSLVIWKNSSGVEERIENIYSRHKIYKLSPEPTYCLKVKAALLTSW
 KIGVYSPVHCIKTTVENELPPPENIEVSVQNYVVKWDYTYANMTFQVQWLHAFKRNPNHLYKWKQI
 PDCENVKTTQCVFPQNVFQKGIYLLRVQASDGNNTSFWSEEIKFDTEIQAFLLPPVFNIRSLSDSFHIYI
 GAPKQSGNTPVIQDYPLIYEIIFWENTSNAERKIEKKTDTVTPNLKPLTVYCVKARAHTMDEKLNKSSV
 FSDAVCEKTKPGNTSKIWLIVGICIALFALPFVIYAAKVLRCINVFFPSLKPSSSIDEYFSEQPLKNL
 LLSTSEEQIEKCFIENISTIATVEETNQTDDEHKKYSSQTSQDSGNYSNEDESESKTSEELQQDFV

TRTRPLEQKLISEEDLAANDILDYKDDDDKV

Chromatograms:

https://cdn.origene.com/chromatograms/mk6015_g08.zip

Restriction Sites:

Sgfl-MluI

Cloning Scheme:

ACCN: NM_000629

ORF Size: 1671 bp

OTI Disclaimer: The molecular sequence of this clone aligns with the gene accession number as a point of reference only. However, individual transcript sequences of the same gene can differ through naturally occurring variations (e.g. polymorphisms), each with its own valid existence. This clone is substantially in agreement with the reference, but a complete review of all prevailing variants is recommended prior to use. [More info](#)

OTI Annotation: This clone was engineered to express the complete ORF with an expression tag. Expression varies depending on the nature of the gene.

Components: The ORF clone is ion-exchange column purified and shipped in a 2D barcoded Matrix tube containing 10ug of transfection-ready, dried plasmid DNA (reconstitute with 100 ul of water).

Reconstitution Method:

1. Centrifuge at 5,000xg for 5min.
2. Carefully open the tube and add 100ul of sterile water to dissolve the DNA.
3. Close the tube and incubate for 10 minutes at room temperature.
4. Briefly vortex the tube and then do a quick spin (less than 5000xg) to concentrate the liquid at the bottom.
5. Store the suspended plasmid at -20°C. The DNA is stable for at least one year from date of shipping when stored at -20°C.

RefSeq: [NM_000629.3](#)
RefSeq Size: 6099 bp

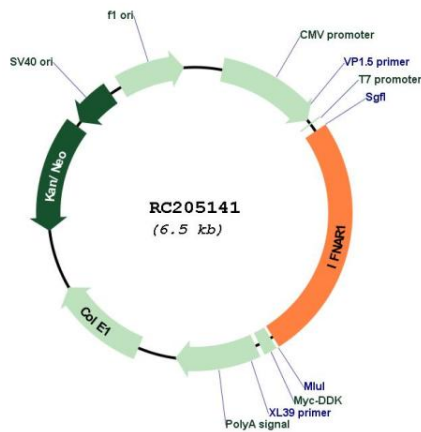
RefSeq ORF: 1674 bp

Locus ID: 3454

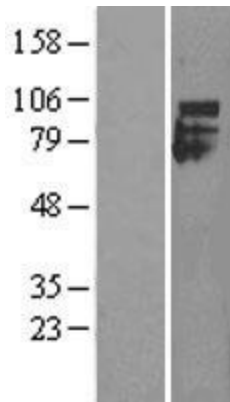
UniProt ID: [P17181](#)

Cytogenetics:	21q22.11
Protein Families:	Druggable Genome, Transmembrane
Protein Pathways:	Cytokine-cytokine receptor interaction, Jak-STAT signaling pathway, Natural killer cell mediated cytotoxicity, Toll-like receptor signaling pathway
MW:	63.5 kDa
Gene Summary:	The protein encoded by this gene is a type I membrane protein that forms one of the two chains of a receptor for interferons alpha and beta. Binding and activation of the receptor stimulates Janus protein kinases, which in turn phosphorylate several proteins, including STAT1 and STAT2. The protein belongs to the type II cytokine receptor family and functions as an antiviral factor. [provided by RefSeq, Jul 2020]

Product images:



Circular map for RC205141



Western blot validation of overexpression lysate (Cat# [LY400212]) using anti-DDK antibody (Cat# [TA50011-100]). Left: Cell lysates from untransfected HEK293T cells; Right: Cell lysates from HEK293T cells transfected with RC205141 using transfection reagent MegaTran 2.0 (Cat# [TT210002]).