

Product datasheet for RC205137

ERLIN1 (NM_006459) Human Tagged ORF Clone

Product data:

Product Type:	Expression Plasmids
Product Name:	ERLIN1 (NM_006459) Human Tagged ORF Clone
Tag:	Myc-DDK
Symbol:	ERLIN1
Synonyms:	C10orf69; Erlin-1; KE04; KEO4; SPFH1; SPG62
Mammalian Cell Selection:	Neomycin
Vector:	pCMV6-Entry (PS100001)
E. coli Selection:	Kanamycin (25 ug/mL)
ORF Nucleotide Sequence:	>RC205137 ORF sequence Red=Cloning site Blue=ORF Green=Tags(s)

TTTTGTAATACGACTCACTATAGGGCGGCCGGAATTCGTCGACTGGATCCGGTACCGAGGAGATCTGCC
GCC**CGATCGCC**

ATGACTCAAGCCCGGGTCTGGTGGCTGCAGTGGTGGGGTGGTGGCTGTCTGCTACGCCTCCATCC
ACAAGATTGAGGAGGGCCATCTGGCTGTGTACTACAGGGGAGGAGCTTTACTAACTAGCCCCAGTGGACC
AGGCTATCATATCATGTTGCCTTTCATTACTACGTTTCAGATCTGTGCAGACAACACTACAACTGATGAA
GTTAAAAATGTGCCTTGTGGAACAAGTGGTGGGGTTCATGATCTATATTGACCGAATAGAAGTGGTTAATA
TGTTGGCTCCTTATGCAGTGTGGATATCGTGAGGAACATACTGCAGATTATGACAAGACCTTAATCTT
CAATAAAATCCACCATGAGCTGAACCAAGTTCGCAAGTCCACACTTCAGGAAGTTTACATTGAATTG
TTTGATCAAATAGATGAAAACCTGAAGCAAGCTCTGCAGAAAGACTTAAACCTCATGGCCCCAGGTCTCA
CTATACAGGCTGTGCGTGTACAAAACCCAAAATCCCAGAAAGCCATAAGAAGAAATTTGAGTTAATGGA
GGCTGAGAAGACAAAACCTCCTTAGCTGCACAGAAAACAAAAGTTGTGGAAAAAGAAAGCTGAGACAGAG
AGGAAAAAGGCAGTTATAGAAGCAGAGAAGATTGCACAAGTGGCAAAAATTCGGTTTCAGCAGAAAGTGA
TGGAAAAAGAACTGAAAAGCGCATTCTGAAATCGAAGATGCTGCATTCTGGCCCGAGAGAAAGCGAA
AGCAGATGCTGAATATTATGCTGCACACAAATATGCCACCTCAAACAAGCACAAGTTGACCCCGGAATAT
CTGGAGCTCAAAAAGTACCAGGCCATTGCTTCTAACAGTAAGATCTATTTTGGCAGCAACATCCCTAACA
TGTTTCGTGGACTCCTCATGTGCTTTGAAATATTCAGATATTAGGACTGGAAGAGAAAAGCTCACTCCCTC
TAAGGAGGCTCTTGAACCTCTGGAGAGAACGTCATCCAAAACAAGAGACACAGGT

ACGCGTACGCGGCCGCTCGAGCAGAAAACCTCATCTCAGAAGAGGATCTGGCAGCAAATGATATCCTGGATT
ACAAGGATGACGACGATAAGGTTTAA



[View online »](#)

Protein Sequence: >RC205137 protein sequence
Red=Cloning site Green=Tags(s)

MTQARVLVAAVVGLVAVLLYASIHKIEEGHLAVYYRGGALLTSPSGPGYHIMLPFITTFRSVQTTLQTDE
 VKNVPCGTSGGVMIIYIDRIEVENMLAPYAVFDIVRNYTADYDKTLIFNKIHHELNQFCSAHTLQEVYIEL
 FDQIDENLKQALQKDLNLMAPGLTIQAVRVTKPKIPEAIRNFELMEAEKTKLLIAAQKQKVVEKEAETE
 RKKAVIEAEKIAQVAKIRFQKVMKEKETEKRISIEIEDAAFLAREKAKADAEYYAAHKYATSNKHKLTPEY
 LELKKYQAIASNSKIYFGSNIPNMFVSSCALKYSDIRGRESSLPSKEALEPSGENVIQNKESTG

TRTRPLEQKLISEEDLAANDILDYKDDDDKV

Chromatograms: https://cdn.origene.com/chromatograms/mk6326_c09.zip

Restriction Sites: SgfI-MluI

Cloning Scheme:



ACCN: NM_006459

ORF Size: 1038 bp

OTI Disclaimer: The molecular sequence of this clone aligns with the gene accession number as a point of reference only. However, individual transcript sequences of the same gene can differ through naturally occurring variations (e.g. polymorphisms), each with its own valid existence. This clone is substantially in agreement with the reference, but a complete review of all prevailing variants is recommended prior to use. [More info](#)

OTI Annotation: This clone was engineered to express the complete ORF with an expression tag. Expression varies depending on the nature of the gene.

Components: The ORF clone is ion-exchange column purified and shipped in a 2D barcoded Matrix tube containing 10ug of transfection-ready, dried plasmid DNA (reconstitute with 100 ul of water).

Reconstitution Method:

1. Centrifuge at 5,000xg for 5min.
2. Carefully open the tube and add 100ul of sterile water to dissolve the DNA.
3. Close the tube and incubate for 10 minutes at room temperature.
4. Briefly vortex the tube and then do a quick spin (less than 5000xg) to concentrate the liquid at the bottom.
5. Store the suspended plasmid at -20°C. The DNA is stable for at least one year from date of shipping when stored at -20°C.

RefSeq: [NM_006459.2](#), [NP_006450.1](#)

RefSeq Size: 3450 bp

RefSeq ORF: 1047 bp

Locus ID: 10613

UniProt ID: [O75477](#)

Cytogenetics: 10q24.31

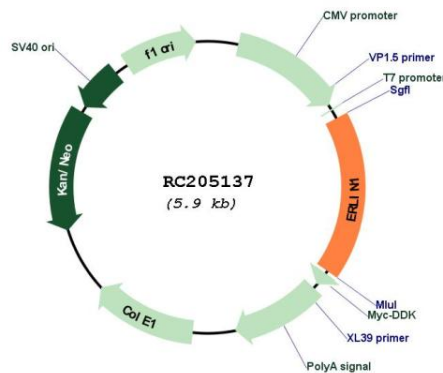
Domains: Band_7

Protein Families: Transmembrane

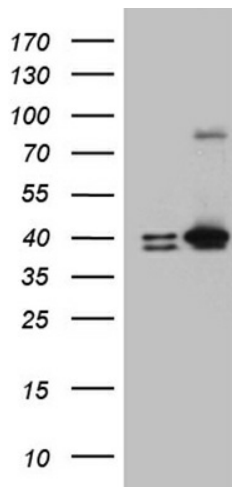
MW: 38.9 kDa

Gene Summary: The protein encoded by this gene is part of a protein complex that mediates degradation of inositol 1,4,5-trisphosphate receptors in the endoplasmic reticulum. The encoded protein also binds cholesterol and regulates the SREBP signaling pathway, which promotes cellular cholesterol homeostasis. Defects in this gene have been associated with spastic paraplegia 62. [provided by RefSeq, Dec 2016]

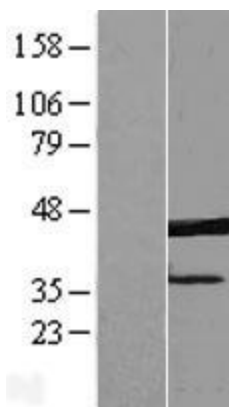
Product images:



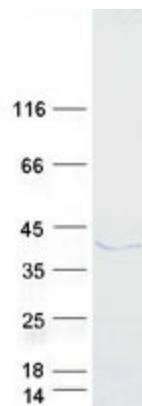
Circular map for RC205137



HEK293T cells were transfected with the pCMV6-ENTRY control (Cat# [PS100001], Left lane) or pCMV6-ENTRY ERLIN1 (Cat# RC205137, Right lane) cDNA for 48 hrs and lysed. Equivalent amounts of cell lysates (5 ug per lane) were separated by SDS-PAGE and immunoblotted with anti-ERLIN1 (Cat# [TA809148])(1:2000). Positive lysates [LY416643] (100ug) and [LC416643] (20ug) can be purchased separately from OriGene.



Western blot validation of overexpression lysate (Cat# [LY420288]) using anti-DDK antibody (Cat# [TA50011-100]). Left: Cell lysates from untransfected HEK293T cells; Right: Cell lysates from HEK293T cells transfected with [RC222216] using transfection reagent MegaTran 2.0 (Cat# [TT210002]).



Coomassie blue staining of purified ERLIN1 protein (Cat# [TP305137]). The protein was produced from HEK293T cells transfected with ERLIN1 cDNA clone (Cat# RC205137) using MegaTran 2.0 (Cat# [TT210002]).