

Product datasheet for RC205136

LY6H (NM_002347) Human Tagged ORF Clone

Product data:

Product Type: Expression Plasmids
Product Name: LY6H (NM_002347) Human Tagged ORF Clone
Tag: Myc-DDK
Symbol: LY6H
Synonyms: NMLY6
Mammalian Cell Selection: Neomycin
Vector: pCMV6-Entry (PS100001)
E. coli Selection: Kanamycin (25 ug/mL)
ORF Nucleotide Sequence: >RC205136 ORF sequence
 Red=Cloning site Blue=ORF Green=Tags(s)

TTTGTGTAATACGACTCACTATAGGGCGGCCGGAATTCGTCGACTGGATCCGGTACCGAGGAGATCTGCC
 GCC**CGGATCGCC**

ATGCTGCCTGCAGCCATGAAGGGCCTCGGCCTGGCGCTGCTGGCCGCTCTGCTGTGCTCGGCGCCCGCTC
 ATGGCCTGTGGTGCCAGGACTGCACCTGACCACCACTCCAGCCATTGCACCCAAAGCAGTGCCAGCC
 GTCCGACACCGTGTGTGCCAGTGTCCGAATCACCGATCCCAGCAGCAGCAGGAAGGATCACTCGGTGAAC
 AAGATGTGTGCCTCCTCCTGCGACTTCGTTAAGCGACACTTTTCTCAGACTATCTGATGGGTTTATTA
 ACTCTGGGATCTTAAAGGTCGACGTGGACTGCTGCGAGAAGGATTGTGCAATGGGCGGCAGGGGCAGG
 GCACAGCCCTGGGCCCTGGCCGGGGGGCTCCTGCTCAGCCTGGGCGCTGCCCTCCTCTGGGCTGGGCC

ACGCGTACGCGGCCGCTCGAGCAGAACTCATCTCAGAAGAGGATCTGGCAGCAAATGATATCCTGGATT
 ACAAGGATGACGACGATAAGGTTTAA

Protein Sequence: >RC205136 protein sequence
 Red=Cloning site Green=Tags(s)

MLPAAMKGLGLALLAVLLCSAPAHGLWCQDCTLTTNSSHCTPKQCQPSDTVCAVSRITDPSSSRKDHVSN
 KMCASSCDFVKRHFFSDYLMGFINSGLKVDVDCCEKDLNCAAGAGHSPWALAGLLLLSLGPALLWAGP

TRTRPLEQKLISEEDLAANDILDYKDDDDKV

Chromatograms: https://cdn.origene.com/chromatograms/mk6326_g11.zip

Restriction Sites: SgfI-MluI



[View online »](#)

Cloning Scheme:


ACCN: NM_002347

ORF Size: 420 bp

OTI Disclaimer: The molecular sequence of this clone aligns with the gene accession number as a point of reference only. However, individual transcript sequences of the same gene can differ through naturally occurring variations (e.g. polymorphisms), each with its own valid existence. This clone is substantially in agreement with the reference, but a complete review of all prevailing variants is recommended prior to use. [More info](#)

OTI Annotation: This clone was engineered to express the complete ORF with an expression tag. Expression varies depending on the nature of the gene.

Components: The ORF clone is ion-exchange column purified and shipped in a 2D barcoded Matrix tube containing 10ug of transfection-ready, dried plasmid DNA (reconstitute with 100 ul of water).

Reconstitution Method:

1. Centrifuge at 5,000xg for 5min.
2. Carefully open the tube and add 100ul of sterile water to dissolve the DNA.
3. Close the tube and incubate for 10 minutes at room temperature.
4. Briefly vortex the tube and then do a quick spin (less than 5000xg) to concentrate the liquid at the bottom.
5. Store the suspended plasmid at -20°C. The DNA is stable for at least one year from date of shipping when stored at -20°C.

Note: Plasmids are not sterile. For experiments where strict sterility is required, filtration with 0.22um filter is required.

RefSeq: [NM_002347.5](#)

RefSeq Size: 950 bp

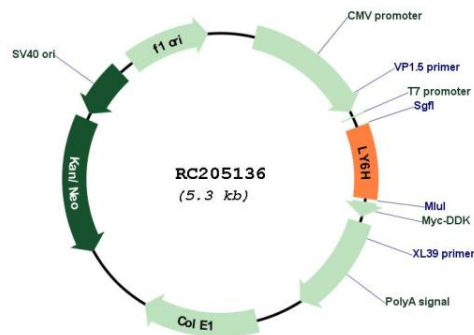
RefSeq ORF: 423 bp

Locus ID: 4062
 UniProt ID: [O94772](#)
 Cytogenetics: 8q24.3

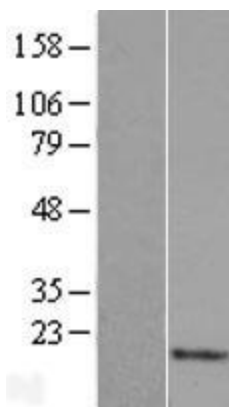
Domains: LU
 MW: 14.7 kDa

Gene Summary: Believed to act as a modulator of nicotinic acetylcholine receptors (nAChRs) activity. In vitro inhibits alpha-3:beta-4-containing nAChRs maximum response. May play a role in the intracellular trafficking of alpha-7-containing nAChRs and may inhibit their expression at the cell surface. Seems to inhibit alpha-7/CHRNA7 signaling in hippocampal neurons. [UniProtKB/Swiss-Prot Function]

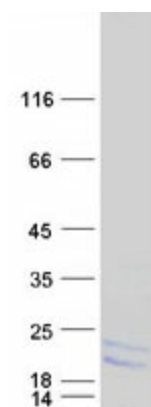
Product images:



Circular map for RC205136



Western blot validation of overexpression lysate (Cat# [LY419383]) using anti-DDK antibody (Cat# [TA50011-100]). Left: Cell lysates from untransfected HEK293T cells; Right: Cell lysates from HEK293T cells transfected with RC205136 using transfection reagent MegaTran 2.0 (Cat# [TT210002]).



Coomassie blue staining of purified LY6H protein (Cat# [TP305136]). The protein was produced from HEK293T cells transfected with LY6H cDNA clone (Cat# RC205136) using MegaTran 2.0 (Cat# [TT210002]).