

Product datasheet for RC205126

KLF12 (NM_007249) Human Tagged ORF Clone

Product data:

Product Type:	Expression Plasmids
Product Name:	KLF12 (NM_007249) Human Tagged ORF Clone
Tag:	Myc-DDK
Symbol:	KLF12
Synonyms:	AP-2rep; AP2REP; HSPC122
Mammalian Cell Selection:	Neomycin
Vector:	pCMV6-Entry (PS100001)
E. coli Selection:	Kanamycin (25 ug/mL)
ORF Nucleotide Sequence:	>RC205126 ORF sequence Red=Cloning site Blue=ORF Green=Tags(s)

TTTTGTAATACGACTCACTATAGGGCGGCCGGAATTCGTCGACTGGATCCGGTACCGAGGAGATCTGCC
GCC**CGATCGCC**

ATGAATATCCATATGAAGAGAAAAACAATAAGAATATCAACACCTTTGAGAACAGAATGTTAATGCTTG
ATGGGATGCCGGCAGTCAGAGTCAAACAGAGCTTTTGAATCTGAACAAGGGTCTCAAACGTCCACAA
CTATCCCGATATGGAAGCCGTTCCCTGTTGCTAAATAATGTGAAAGGGGAGCCCCGGAGGACTCGTTA
TCTGTAGATCACTTCAAACACAACTGAGCCAGTGGACTTGCAATAAACAAGCCAGGACGTCCCCTA
CTGCCGTTTCATCTCCCGAGTTCCATGACAGCATCTGCCTCCTCACCTTCTTCAACTCAACCTTTC
ATCGTCTTCTAGTCGTCTAGCCTCATCCCAACTGTTATCACATCAGTATCTTCAGCGTCATCTTCGTCA
ACAGTATTAACCTCCAGGGCCCTTGTGGCCTCTGCATCTGGTGTGGAGGCCAGCAGTTTTTGCACATTA
TCCATCCCGTACCGCCTTCAAGTCCCATGAATTTACAGTCTAACAACTGAGTCATGTTACCCGCATCCC
CGTGGTGGTACAGTCGGTGCCTGTTGTCTACACAGCTGAAGGTACCTGGAAATGTGAACAACACTATT
GTCGTGCCGCTTTTGGAGGATGGGAGAGGCCATGGCAAAGCACAAATGGACCCCGAGGCCATCTCCCA
GACAAAGTAAAAGTGACAGTGATGATGACCTGCCAAATGTGACCTTAGATAGCGTTAATGAACTGG
ATCTACGGCCCTTCCATAGCCAGAGCAGTACAAGAGGTACATCCGTCGCCAGTATCAAGGGTCCGGGA
AATCGAATGAATAATCAAAGTTTCCTTGTTCATTTCCACATTTAGTATTGAGAGCACAAAGCCGAGA
GACGGTCTGAATCCCGAGACTCCAGAAAACGGCGTATCCACAGATGTGATTTTGGAGGATGCAACAAAGT
GTACACAAAAAGTTCTCACCTGAAGGCTCACCGGAGGACACATACAGGAGAGAAACCTTACAAGTGTACC
TGGGAAGGCTGCACCTGGAAGTTCGCTCGTTCCAGATGAACTGACGAGGCATTACCGCAAACATACGGGAG
TGAAGCCATTCAAGTGCAGGACTGTGATCGCAGCTTTTCCCGGTGAGATCATTTGGCCCTGCACCGCCG
GAGGCATATGTTGGTG

ACGCGTACGCGGCCGCTCGAGCAGAACTCATCTCAGAAGAGGATCTGGCAGCAAATGATATCCTGGATT
ACAAGGATGACGACGATAAGGTTTAA



[View online >](#)

Protein Sequence: >RC205126 protein sequence
Red=Cloning site Green=Tags(s)

MNIHMKRRTIKNINTFENRMLMLDGMPAVRVKTELLESEQGSPNVHNYPDMEAVPLLLNNVKGEPPEDSL
 SVDHFQTQTEPVDLSINKARTSPTAVSSSPVSMASASSPSSTSTSSSSSRLASSPTVITSVSSASSSS
 TVLTPGPLVASASGVGGQQLHIHPVPPSSPMNLQSNKLSHVHRIPVVVQSVPVVYTAVRSPGNVNNTI
 VVPLLEDGRGHGKAQMDPRGLSPRQSKSDSDDDDLPNVTLDSVNETGSTALSIARAVQEVHPSVSRVRG
 NRMNNQKFPCSI SPFSIESTRRQRRESPPDSRKRRIHRCDFEGCNKVYTKSSHLKAHRRRHTGKPYKCT
 WEGCTWKFARSDELTRHYRKHTGVKPFKACDCRSFSRSDHLALHRRRHMLV

TRTRPLEQKLISEEDLAANDILDYKDDDDKV

Chromatograms: https://cdn.origene.com/chromatograms/mk6138_g08.zip

Restriction Sites: SgfI-MluI

Cloning Scheme:



ACCN: NM_007249

ORF Size: 1206 bp

OTI Disclaimer: The molecular sequence of this clone aligns with the gene accession number as a point of reference only. However, individual transcript sequences of the same gene can differ through naturally occurring variations (e.g. polymorphisms), each with its own valid existence. This clone is substantially in agreement with the reference, but a complete review of all prevailing variants is recommended prior to use. [More info](#)

OTI Annotation: This clone was engineered to express the complete ORF with an expression tag. Expression varies depending on the nature of the gene.

Components: The ORF clone is ion-exchange column purified and shipped in a 2D barcoded Matrix tube containing 10ug of transfection-ready, dried plasmid DNA (reconstitute with 100 ul of water).

Reconstitution Method:

1. Centrifuge at 5,000xg for 5min.
2. Carefully open the tube and add 100ul of sterile water to dissolve the DNA.
3. Close the tube and incubate for 10 minutes at room temperature.
4. Briefly vortex the tube and then do a quick spin (less than 5000xg) to concentrate the liquid at the bottom.
5. Store the suspended plasmid at -20°C. The DNA is stable for at least one year from date of shipping when stored at -20°C.

RefSeq: [NM_007249.5](#)

RefSeq Size: 10923 bp

RefSeq ORF: 1209 bp

Locus ID: 11278

UniProt ID: [Q9Y4X4](#)

Cytogenetics: 13q22.1

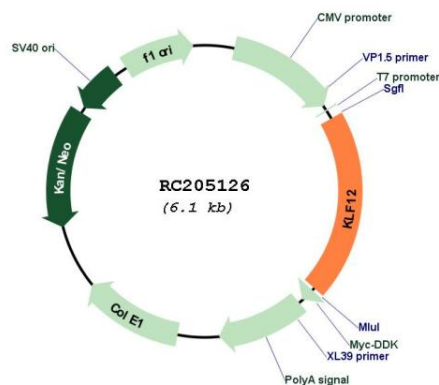
Domains: zf-C2H2

Protein Families: Transcription Factors

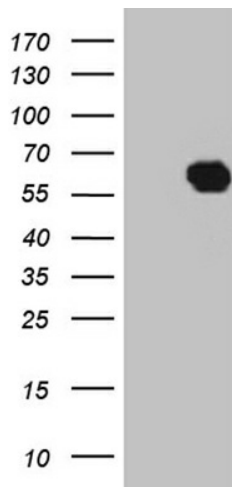
MW: 44.2 kDa

Gene Summary: Activator protein-2 alpha (AP-2 alpha) is a developmentally-regulated transcription factor and important regulator of gene expression during vertebrate development and carcinogenesis. The protein encoded by this gene is a member of the Kruppel-like zinc finger protein family and can repress expression of the AP-2 alpha gene by binding to a specific site in the AP-2 alpha gene promoter. Repression by the encoded protein requires binding with a corepressor, CtBP1. Two transcript variants encoding different isoforms have been found for this gene. [provided by RefSeq, Jul 2008]

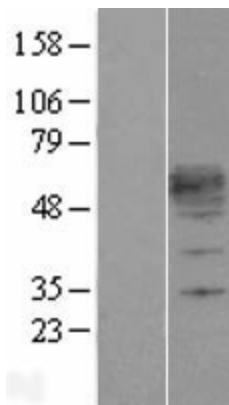
Product images:



Circular map for RC205126



HEK293T cells were transfected with the pCMV6-ENTRY control (Cat# [PS100001], Left lane) or pCMV6-ENTRY KLF12 (Cat# RC205126, Right lane) cDNA for 48 hrs and lysed. Equivalent amounts of cell lysates (5 ug per lane) were separated by SDS-PAGE and immunoblotted with anti-KLF12 (Cat# [TA810316])(1:2000). Positive lysates [LY402120] (100ug) and [LC402120] (20ug) can be purchased separately from OriGene.



Western blot validation of overexpression lysate (Cat# [LY402120]) using anti-DDK antibody (Cat# [TA50011-100]). Left: Cell lysates from untransfected HEK293T cells; Right: Cell lysates from HEK293T cells transfected with RC205126 using transfection reagent MegaTran 2.0 (Cat# [TT210002]).