

Product datasheet for RC205125

VAMP1 (NM_199245) Human Tagged ORF Clone

Product data:

Product Type: Expression Plasmids
Product Name: VAMP1 (NM_199245) Human Tagged ORF Clone
Tag: Myc-DDK
Symbol: VAMP1
Synonyms: CMS25; SPAX1; SYB1; VAMP-1
Mammalian Cell Selection: Neomycin
Vector: pCMV6-Entry (PS100001)
E. coli Selection: Kanamycin (25 ug/mL)
ORF Nucleotide Sequence: >RC205125 ORF sequence
Red=Cloning site Blue=ORF Green=Tags(s)

TTTTGTAATACGACTCACTATAGGGCGCCGGGAATTCGTCGACTGGATCCGGTACCGAGGAGATCTGCC
GCC**CGATCGCC**

ATGTCTGCTCCAGCTCAGCCACCTGCTGAAGGGACAGAAGGGACTGCCCCAGGTGGGGTCCCCCTGGCC
CTCCTCCTAACATGACCAGTAACAGACGACTACAGCAAACCCAGGCACAAGTGGAGGAGGTGGTGGACAT
CATACGTGTGACGTGGACAAGGTCCTGGAGAGGGACCAGAAGCTGTGAGAGCTGGATGACCGAGCTGAT
GCCTTGCAGGCAGGAGCATCACAATTTGAGAGCAGTGTGCAAAGCTAAAGAGGAAGTATTGGTGGAAAA
ACTGCAAGATGATGATCATGCTGGGAGCCATCTGTGCCATCATCGTGGTAGTTATTGTAAGTAAGTATCG
C

ACGCGTACGCGGCCGCTCGAGCAGAACTCATCTCAGAAGAGGATCTGGCAGCAAATGATATCCTGGATT
ACAAGGATGACGACGATAAGGTTTAA

Protein Sequence: >RC205125 protein sequence
Red=Cloning site Green=Tags(s)
MSAPAQPPAEGTEGTAPGGPPGPPNMTSNRRLQQTQAQVEEVVDIIRVNVDKVLERDQKLSLDDRAD
ALQAGASQFESSAAKLKRKYWWKNCKMMIMLGAICAIIVVIVSKYR

TRTRPLEQKLISEEDLAANDILDYKDDDDKV

Chromatograms: https://cdn.origene.com/chromatograms/mk6326_g04.zip

Restriction Sites: Sgfl-Mlul



[View online »](#)

Cloning Scheme:


ACCN: NM_199245

ORF Size: 351 bp

OTI Disclaimer: The molecular sequence of this clone aligns with the gene accession number as a point of reference only. However, individual transcript sequences of the same gene can differ through naturally occurring variations (e.g. polymorphisms), each with its own valid existence. This clone is substantially in agreement with the reference, but a complete review of all prevailing variants is recommended prior to use. [More info](#)

OTI Annotation: This clone was engineered to express the complete ORF with an expression tag. Expression varies depending on the nature of the gene.

Components: The ORF clone is ion-exchange column purified and shipped in a 2D barcoded Matrix tube containing 10ug of transfection-ready, dried plasmid DNA (reconstitute with 100 ul of water).

- Reconstitution Method:**
1. Centrifuge at 5,000xg for 5min.
 2. Carefully open the tube and add 100ul of sterile water to dissolve the DNA.
 3. Close the tube and incubate for 10 minutes at room temperature.
 4. Briefly vortex the tube and then do a quick spin (less than 5000xg) to concentrate the liquid at the bottom.
 5. Store the suspended plasmid at -20°C. The DNA is stable for at least one year from date of shipping when stored at -20°C.

RefSeq: [NM_199245.3](#)

RefSeq Size: 3373 bp

RefSeq ORF: 354 bp

Locus ID: 6843

UniProt ID: [P23763](#)

Cytogenetics: 12p13.31

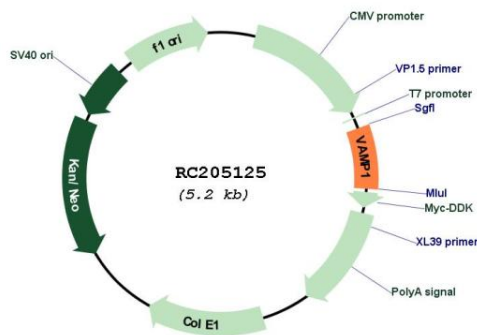
Protein Families: Secreted Protein, Transmembrane

Protein Pathways: SNARE interactions in vesicular transport

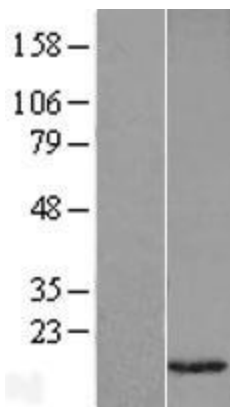
MW: 12.8 kDa

Gene Summary: Synaptobrevins, syntaxins, and the synaptosomal-associated protein SNAP25 are the main components of a protein complex involved in the docking and/or fusion of synaptic vesicles with the presynaptic membrane. The protein encoded by this gene is a member of the vesicle-associated membrane protein (VAMP)/synaptobrevin family. Mutations in this gene are associated with autosomal dominant spastic ataxia 1. Multiple alternative splice variants have been described, but the full-length nature of some variants has not been defined. [provided by RefSeq, Jul 2014]

Product images:



Circular map for RC205125



Western blot validation of overexpression lysate (Cat# [LY404313]) using anti-DDK antibody (Cat# [TA50011-100]). Left: Cell lysates from untransfected HEK293T cells; Right: Cell lysates from HEK293T cells transfected with RC205125 using transfection reagent MegaTran 2.0 (Cat# [TT210002]).