

## Product datasheet for **RC205117**

### LSM8 (NM\_016200) Human Tagged ORF Clone

#### Product data:

**Product Type:** Expression Plasmids  
**Product Name:** LSM8 (NM\_016200) Human Tagged ORF Clone  
**Tag:** Myc-DDK  
**Symbol:** LSM8  
**Synonyms:** NAA38  
**Mammalian Cell Selection:** Neomycin  
**Vector:** pCMV6-Entry (PS100001)  
**E. coli Selection:** Kanamycin (25 ug/mL)  
**ORF Nucleotide Sequence:** >RC205117 representing NM\_016200  
Red=Cloning site Blue=ORF Green=Tags(s)

TTTTGTAATACGACTCACTATAGGGCGGCCGGAATTCGTCGACTGGATCCGGTACCGAGGAGATCTGCC  
GCC**CGATCGCC**

ATGACGTCGCTTTGGAGAACTACATCAACCGAACTGTTGCCGTTATTACATCAGATGGGAGAATGATTG  
TGGGAACACTGAAAGTTTTGACCAGACCATTAAATTTGATTTGGATGAAAGCCATGAACGAGTATTCAG  
CTCTTCACAGGGGTAGAACAAGTGGTACTAGGATTATACATTGTAAGAGGTGACAACGTTGCAGTCATT  
GGAGAAATCGATGAAGAAACAGATTCTGCGCTTGATTTGGGAATATTCGAGCAGAACCTTTAAATCTG  
TAGCACAC

**ACGCGT**ACGCGGCCGCTCGAGCAGAAACTCATCTCAGAAGAGGATCTGGCAGCAAATGATATCCTGGATT  
ACAAGGATGACGACGATAAGGTTTAA

**Protein Sequence:** >RC205117 representing NM\_016200  
Red=Cloning site Green=Tags(s)

MTSALENYINRTVAVITSDGRMIVGTLKGFDTINLILDESHERVFSQQGVEQVVLGLYIVRGDNVAVI  
GEIDEETDSALDLGNIRAEPLNSVAH

**TR**TRPLEQKLISEEDLAANDILDYKDDDDKV

**Chromatograms:** [https://cdn.origene.com/chromatograms/mk8112\\_h07.zip](https://cdn.origene.com/chromatograms/mk8112_h07.zip)

**Restriction Sites:** SgfI-MluI



[View online »](#)

**Cloning Scheme:**


**ACCN:** NM\_016200

**ORF Size:** 288 bp

**OTI Disclaimer:** The molecular sequence of this clone aligns with the gene accession number as a point of reference only. However, individual transcript sequences of the same gene can differ through naturally occurring variations (e.g. polymorphisms), each with its own valid existence. This clone is substantially in agreement with the reference, but a complete review of all prevailing variants is recommended prior to use. [More info](#)

**OTI Annotation:** This clone was engineered to express the complete ORF with an expression tag. Expression varies depending on the nature of the gene.

**Components:** The ORF clone is ion-exchange column purified and shipped in a 2D barcoded Matrix tube containing 10ug of transfection-ready, dried plasmid DNA (reconstitute with 100 ul of water).

- Reconstitution Method:**
1. Centrifuge at 5,000xg for 5min.
  2. Carefully open the tube and add 100ul of sterile water to dissolve the DNA.
  3. Close the tube and incubate for 10 minutes at room temperature.
  4. Briefly vortex the tube and then do a quick spin (less than 5000xg) to concentrate the liquid at the bottom.
  5. Store the suspended plasmid at -20°C. The DNA is stable for at least one year from date of shipping when stored at -20°C.

**Note:** Plasmids are not sterile. For experiments where strict sterility is required, filtration with 0.22um filter is required.

**RefSeq:** [NM\\_016200.5](#)

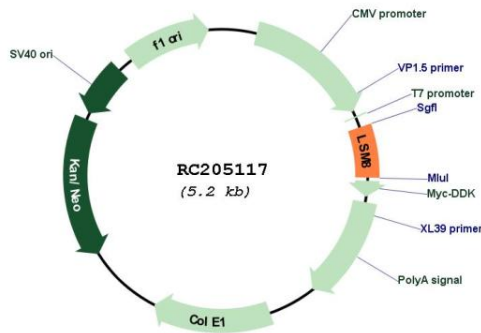
**RefSeq Size:** 12520 bp

**RefSeq ORF:** 291 bp

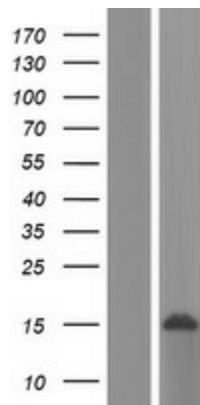
**Locus ID:** 51691  
**UniProt ID:** [O95777](#)  
**Cytogenetics:** 7q31.31  
**Domains:** Sm  
**Protein Pathways:** RNA degradation, Spliceosome  
**MW:** 10.4 kDa

**Gene Summary:** This gene encodes a member of the like-Sm family of proteins. The encoded protein consists of a closed barrel shape, made up of five anti-parallel beta strands and an alpha helix. This protein partners with six paralogs to form a heteroheptameric ring which transiently binds U6 small nuclear RNAs and is involved in the general maturation of RNA in the nucleus.  
 [provided by RefSeq, Jan 2010]

### Product images:



Circular map for RC205117



Western blot validation of overexpression lysate (Cat# [LY414132]) using anti-DDK antibody (Cat# [TA50011-100]). Left: Cell lysates from untransfected HEK293T cells; Right: Cell lysates from HEK293T cells transfected with RC205117 using transfection reagent MegaTran 2.0 (Cat# [TT210002]).