

## Product datasheet for **RC205115**

### **C10orf4 (FRA10AC1) (NM\_145246) Human Tagged ORF Clone**

#### Product data:

Product Type:	Expression Plasmids
Product Name:	C10orf4 (FRA10AC1) (NM_145246) Human Tagged ORF Clone
Tag:	Myc-DDK
Symbol:	C10orf4
Synonyms:	C10orf4; F26C11.1-like; FRA10A
Mammalian Cell Selection:	Neomycin
Vector:	pCMV6-Entry (PS100001)
E. coli Selection:	Kanamycin (25 ug/mL)
ORF Nucleotide Sequence:	>RC205115 ORF sequence Red=Cloning site Blue=ORF Green=Tags(s)

TTTTGTAATACGACTCACTATAGGGCGGCCGGAATTCGTCGACTGGATCCGGTACCGAGGAGATCTGCC  
GCC**CGATCGCC**

ATGCATGGTCATGGAGGCTATGATTCTGATTTTAGTGATGATGAACACTGTGGAGAATCCAGCAAAAGGA  
AAAAAAGGACAGTTGAAGACGACTTACTGCTCCAAAACCATTTTCAGAAAGAAAAACATGGAAAGGTGGC  
TCATAAACAGTTGCAGCAGAATTGCTGGATAGGGAAGAAGCAAGAAATAGAAGGTTTCATCTCATAGCT  
ATGGATGCTTATCAAAGACATAGAAAGTTCGTAATGACTATATTTTATACTATGGTGGCAAAAAGAAG  
ACTTCAAGCGTTTGGGGAAAATGACAAGACAGACTTGGATGTTATACGAGAAAAATCATAGATTCCTATG  
GAATGAGGAGGACGAAATGGACATGACTTGGGAGAAGAGACTTGCATAAGAAATACTATGATAAATATTT  
AAGGAATACTGCATAGCAGATCTCAGTAAATATAAAGAAAATAAGTTTGGATTTAGTGCGGAGTAGAAA  
AAGAAGTAATTTTCAGGAAAAGGTCAATTTTCTGTGAAAATAAATATTGTGATAAAAAAGAAGGCTAAA  
GAGTTGGGAAGTTAATTTTGGTTATATTGAGCATGGTGAGAAGAGAAATGCACCTTGTTAAATTAAGGTTA  
TGCCAAGAATGTTCCATTAATTAATTTCCATCACAGGAGAAAAGAAATCAAGTCAAAAAAAGAAAAG  
ATAAAACCAAAAAAGACTGTGAAGAGTCATCACATAAAAAATCCAGATTATCTTTCGAGAAGAGGCCTC  
CAAGAAAAAGATAAAGGACATTCATCTTCAAAGAAATCTGAAGATTCTACTTAGAACTCTGATGAG  
GAAGAAAGTGCTTCAGAATCTGAACTTTGGAAGGTCCTACTACCAGAGACAGATGAAAAATCACAGGAAG  
AAGAATTTGATGAGTATTTTCAGGATTTGTTTCTA

**ACGCGT**ACGCGGCCGCTCGAGCAGAAACTCATCTCAGAAGAGGATCTGGCAGCAATGATATCCTGGATT  
ACAAGGATGACGACGATAAGGTTTAA



[View online »](#)

**Protein Sequence:** >RC205115 protein sequence  
Red=Cloning site Green=Tags(s)

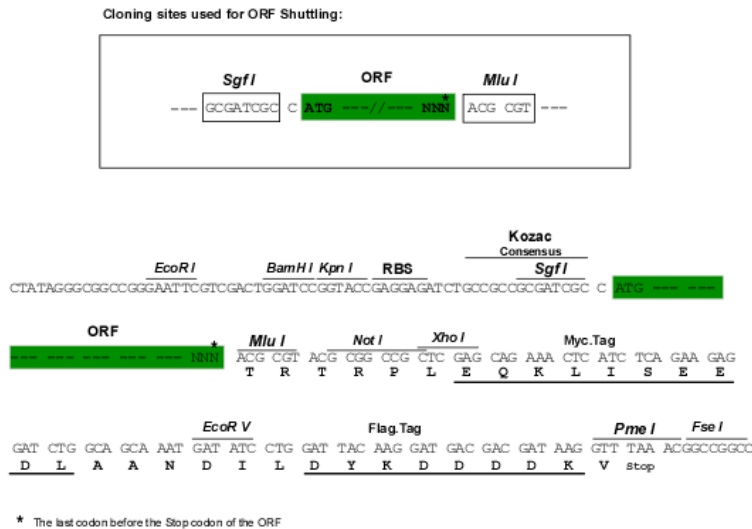
MHGHGGYDSDFSDDDEHCGESSKRKKRTVEDDLLLQKPFQKEKHGKVAHKQVAAELLDREEARNRRFHLIA  
MDAYQRHRKFVNDYILYGGKKEDFKRLGENDKTDLDVIRENHRFLWNEEEMDMTWEKRLAKKYYDKLF  
KEYCIADLSKYKENKFGFRWRVEKEVISGKQFFCGNKYCDKKEGLKSWEVNFYIEHGEKRNALVKLRL  
CQEQCSIKLNFHHRKEIKSKRRKDKTKDCEESSHKKSRLSSAEEASKKKDKGHSSSKKSEDSLLRNSDE  
EESASESELWKGPLPETDEKSQEEEFDEYFQDLFL

TRTRPLEQKLISEEDLAANDILDYKDDDDKV

**Chromatograms:** [https://cdn.origene.com/chromatograms/mk6796\\_b01.zip](https://cdn.origene.com/chromatograms/mk6796_b01.zip)

**Restriction Sites:** SgfI-MluI

**Cloning Scheme:**



**ACCN:** NM\_145246

**ORF Size:** 945 bp

**OTI Disclaimer:** The molecular sequence of this clone aligns with the gene accession number as a point of reference only. However, individual transcript sequences of the same gene can differ through naturally occurring variations (e.g. polymorphisms), each with its own valid existence. This clone is substantially in agreement with the reference, but a complete review of all prevailing variants is recommended prior to use. [More info](#)

**OTI Annotation:** This clone was engineered to express the complete ORF with an expression tag. Expression varies depending on the nature of the gene.

**Components:** The ORF clone is ion-exchange column purified and shipped in a 2D barcoded Matrix tube containing 10ug of transfection-ready, dried plasmid DNA (reconstitute with 100 ul of water).

**Reconstitution Method:**

1. Centrifuge at 5,000xg for 5min.
2. Carefully open the tube and add 100ul of sterile water to dissolve the DNA.
3. Close the tube and incubate for 10 minutes at room temperature.
4. Briefly vortex the tube and then do a quick spin (less than 5000xg) to concentrate the liquid at the bottom.
5. Store the suspended plasmid at -20°C. The DNA is stable for at least one year from date of shipping when stored at -20°C.

**RefSeq:** [NM\\_145246.1](#)

**RefSeq Size:** 3089 bp

**RefSeq ORF:** 948 bp

**Locus ID:** 118924

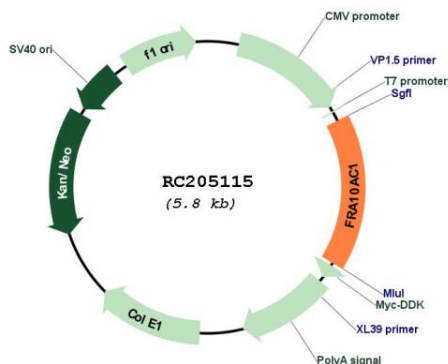
**UniProt ID:** [Q70Z53](#)

**Cytogenetics:** 10q23.33

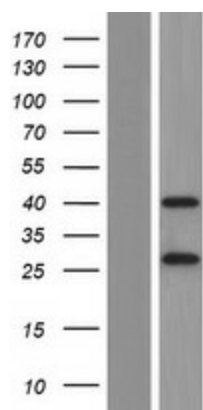
**MW:** 37.6 kDa

**Gene Summary:** The protein encoded by this gene is a nuclear phosphoprotein of unknown function. This gene contains a tandem CGG repeat region within a CpG island that normally consists of 8-14 repeats but can expand to over 200 repeats. The repeat region is within the 5' UTR of some transcript variants, but is intronic to another variant. The expanded repeat allele is a fragile site and becomes hypermethylated, causing a reduction in gene expression. A disease phenotype has not been associated with expanded alleles. This gene is found within the rare FRA10A folate-sensitive fragile site. [provided by RefSeq, Dec 2016]

### Product images:



Circular map for RC205115



Western blot validation of overexpression lysate (Cat# [LY407980]) using anti-DDK antibody (Cat# [TA50011-100]). Left: Cell lysates from untransfected HEK293T cells; Right: Cell lysates from HEK293T cells transfected with RC205115 using transfection reagent MegaTran 2.0 (Cat# [TT210002]).