

Product datasheet for RC205110

SPESP1 (NM_145658) Human Tagged ORF Clone

Product data:

Product Type:	Expression Plasmids
Product Name:	SPESP1 (NM_145658) Human Tagged ORF Clone
Tag:	Myc-DDK
Symbol:	SPESP1
Synonyms:	ESP; SP-ESP
Mammalian Cell Selection:	Neomycin
Vector:	pCMV6-Entry (PS100001)
E. coli Selection:	Kanamycin (25 ug/mL)
ORF Nucleotide Sequence:	>RC205110 ORF sequence Red=Cloning site Blue=ORF Green=Tags(s)

TTTTGTAATACGACTCACTATAGGGCGGCCGGAATTCGTCGACTGGATCCGGTACCGAGGAGATCTGCC
GCC**CGCATCGCC**

ATGAAGCCCTTAGTCCTCTAGTTGCGCTTTTGCTATGGCCTTCGTCTGTGCCGGCTTATCCGAGCATAA
CTGTGACACCTGATGAAGAGCAAACCTTGAATCATTATATACAAGTTTTAGAGAACCTAGTACGAAGTGT
TCCCTCTGGGGAGCCAGGTCGTGAGAAAAATCTAACTCTCCAAAACATGTTTATTCTATAGCATCAAAG
GGATCAAATTTAAGGAGCTAGTTACACATGGAGACGCTTCAACTGAGAATGATGTTTTAACCAATCCTA
TCAGTGAAGAACTACAACCTTCCCTACAGGAGCTTCACACCGAAATAGGAAAGAAAAACACACGGA
AAGTACCCATTCTGGTCGATCAAACCAAACAATGTTTCCATTGTTTGCATGCAGAGGAACCTTATATT
GAAAATGAAGAGCCAGAGCCAGAGCCGGAGCCAGCTGCAAAACAACTGAGGCACCAAGAATGTTGCCAG
TTGTTACTGAATCATCTACAAGTCCATATGTTACCTCATAACAAGTCACTGTCCACTTTAGATAAGAG
CACTGGCATTGGGATCTCTACAGAATCAGAAGATGTTCCCTCAGCTCTCAGGTGAACTGCGATAGAAAA
CCCGAAGAGTTTGGAAAGCACCCAGAGATTGGAATAATGATGACATTTTAAAAAAATTTAGATATTA
ATTCACAAGTGAACAGGCATTCTTAGTGACACCAGCAACCCAGCATATAGAGAAGATATTGAAGCCTC
TAAAGTACCTAAAACGAAGCCTTGTCTAGCAGCAGCAGCAGAACATAAAATAAAAACAATGTATAAG
TCCCAGTTATTGCCAGTAGGACGAACAAGTAATAAAATTTGATGACATCGAACTGTTATTAACATGCTGT
GTAATTCTAGATCTAACTCTATGAATATTTAGATATTAATGTTCCACCAGAGATGAGAGAAAAAGC
TGCTACAGTATTCAATACATTAATAAATATGTGTAGATCAAGGAGAGTCACAGCCTTATTAAGTTTAT

ACGCGTACGCGGCCGCTCGAGCAGAACTCATCTCAGAAGAGGATCTGGCAGCAATGATATCCTGGATT
ACAAGGATGACGACGATAAGGTTTAA



[View online »](#)

Protein Sequence: >RC205110 protein sequence
Red=Cloning site Green=Tags(s)

MKPLVLLVALLLWPSSVPAYPSITVTPDEEQNLNHYIQVLENLRSVSPSGEPGREKKSNSPKHVYSIASK
 GSKFKELVTHGDASTENDVLTNP I SEETTTTFPTGGFTPEIGKKKHTESTPFWSIKPNNVSIVLHAEOPYI
 ENEEPEPEPEPAAKQTEAPRMLPVVTESSSTSPYVTSYKSPVTTLDKSTGIGISTESEDVPQLSGETAIEK
 PEEFGKHPESWNNDDILKKILDINSQVQALLSDT SNPAYREDIEASKDHLKRSLALAAAAEHKTKMYK
 SQLLPVGRTSNKIDDIETVINMLCNSRSKLYEYLDIKCVPEMREKAATVFNTLKNMCRSRRVTALLKVY

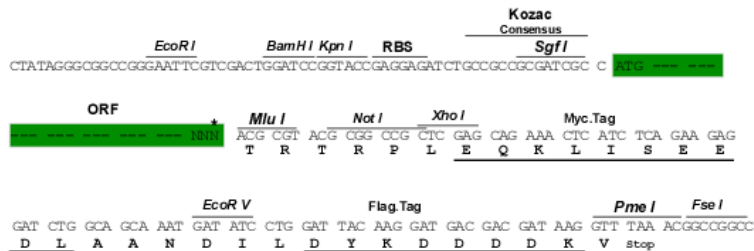
TRTRPLEQKLISEEDLAANDILDYKDDDDKV

Chromatograms: https://cdn.origene.com/chromatograms/mk6439_h12.zip

Restriction Sites: SgfI-MluI

Cloning Scheme:

Cloning sites used for ORF Shuttling:



* The last codon before the Stop codon of the ORF

ACCN: NM_145658

ORF Size: 1050 bp

OTI Disclaimer: The molecular sequence of this clone aligns with the gene accession number as a point of reference only. However, individual transcript sequences of the same gene can differ through naturally occurring variations (e.g. polymorphisms), each with its own valid existence. This clone is substantially in agreement with the reference, but a complete review of all prevailing variants is recommended prior to use. [More info](#)

OTI Annotation: This clone was engineered to express the complete ORF with an expression tag. Expression varies depending on the nature of the gene.

Components: The ORF clone is ion-exchange column purified and shipped in a 2D barcoded Matrix tube containing 10ug of transfection-ready, dried plasmid DNA (reconstitute with 100 ul of water).

Reconstitution Method:

1. Centrifuge at 5,000xg for 5min.
2. Carefully open the tube and add 100ul of sterile water to dissolve the DNA.
3. Close the tube and incubate for 10 minutes at room temperature.
4. Briefly vortex the tube and then do a quick spin (less than 5000xg) to concentrate the liquid at the bottom.
5. Store the suspended plasmid at -20°C. The DNA is stable for at least one year from date of shipping when stored at -20°C.

Note: Plasmids are not sterile. For experiments where strict sterility is required, filtration with 0.22um filter is required.

RefSeq: [NM_145658.4](#)

RefSeq Size: 1436 bp

RefSeq ORF: 1053 bp

Locus ID: 246777

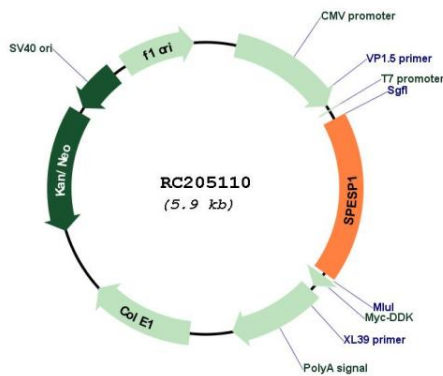
UniProt ID: [Q6UW49](#)

Cytogenetics: 15q23

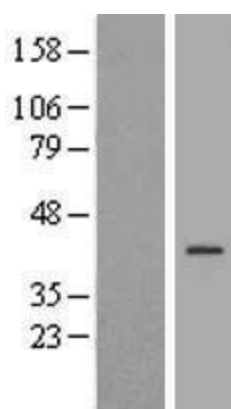
MW: 38.9 kDa

Gene Summary: The encoded protein is a human alloantigen involved in sperm-egg binding and fusion. [provided by RefSeq, Apr 2010]

Product images:



Circular map for RC205110



Western blot validation of overexpression lysate (Cat# [LY407913]) using anti-DDK antibody (Cat# [TA50011-100]). Left: Cell lysates from untransfected HEK293T cells; Right: Cell lysates from HEK293T cells transfected with RC205110 using transfection reagent MegaTran 2.0 (Cat# [TT210002]).