

Product datasheet for **RC205107**

PPDPFL (NM_001007176) Human Tagged ORF Clone

Product data:

Product Type: Expression Plasmids
Product Name: PPDPFL (NM_001007176) Human Tagged ORF Clone
Tag: Myc-DDK
Symbol: PPDPFL
Synonyms: C8orf22
Mammalian Cell Selection: Neomycin
Vector: pCMV6-Entry (PS100001)
E. coli Selection: Kanamycin (25 ug/mL)
ORF Nucleotide Sequence: >RC205107 ORF sequence
Red=Cloning site Blue=ORF Green=Tags(s)

TTTTGTAATACGACTCACTATAGGGCGGCCGGAATTCGTCGACTGGATCCGGTACCGAGGAGATCTGCC
GCC**CGATCGCC**

ATGGCATCCGTACCTTCCATTGGTTGCCTTCTAGCCAGAAATCAGTATTATCGAAAGTCCAGTGTTCCT
CAGTTAGTTCTTTAACTAGCTCTGATTCTGTTAACTTCATAGATGACGACAAACCACAGCAAGGGTTGCC
TGAAGTGGCAGAATCCACCTGGTGGTTAAATCGTTTTCCATTCTGAACCTGTGCTTTCAAATGTGAGA
ATAAAAGATCTGTCTGCTACTGGCATGAACAGT

ACGCGTACGCGGCCGCTCGAGCAGAAACTCATCTCAGAAGAGGATCTGGCAGCAAATGATATCCTGGATT
ACAAGGATGACGACGATAAGGTTTAA

Protein Sequence: >RC205107 protein sequence
Red=Cloning site Green=Tags(s)
MASVPSIGCLLARNQYYRKSSVSSVSSLTSSDSVNFIDDDKPQQGLPEVAESTWWFKSFFHSEPVL SNVR
IKDLSATGMNS

TRTRPLEQKLISEEDLAANDILDYKDDDDKV

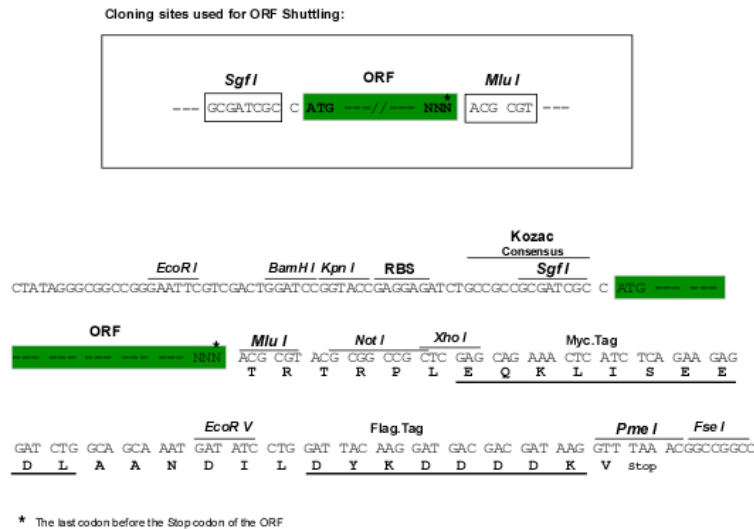
Chromatograms: https://cdn.origene.com/chromatograms/mk6426_b05.zip

Restriction Sites: Sgfl-Mlul



[View online »](#)

Cloning Scheme:



ACCN: NM_001007176

ORF Size: 243 bp

OTI Disclaimer: The molecular sequence of this clone aligns with the gene accession number as a point of reference only. However, individual transcript sequences of the same gene can differ through naturally occurring variations (e.g. polymorphisms), each with its own valid existence. This clone is substantially in agreement with the reference, but a complete review of all prevailing variants is recommended prior to use. [More info](#)

OTI Annotation: This clone was engineered to express the complete ORF with an expression tag. Expression varies depending on the nature of the gene.

Components: The ORF clone is ion-exchange column purified and shipped in a 2D barcoded Matrix tube containing 10ug of transfection-ready, dried plasmid DNA (reconstitute with 100 ul of water).

Reconstitution Method:

1. Centrifuge at 5,000xg for 5min.
2. Carefully open the tube and add 100ul of sterile water to dissolve the DNA.
3. Close the tube and incubate for 10 minutes at room temperature.
4. Briefly vortex the tube and then do a quick spin (less than 5000xg) to concentrate the liquid at the bottom.
5. Store the suspended plasmid at -20°C. The DNA is stable for at least one year from date of shipping when stored at -20°C.

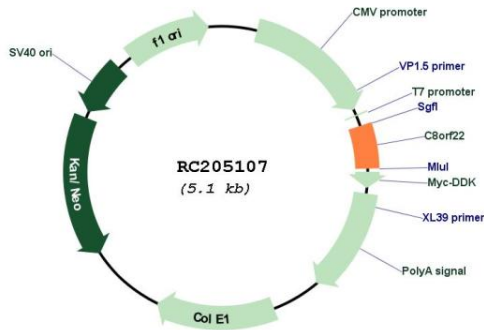
Note: Plasmids are not sterile. For experiments where strict sterility is required, filtration with 0.22um filter is required.

RefSeq: [NM_001007176.5](#)

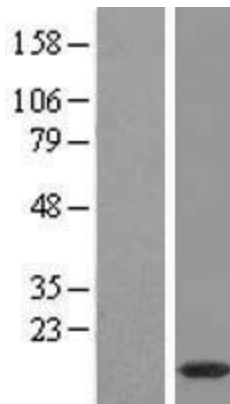
RefSeq Size: 1268 bp

RefSeq ORF: 246 bp
 Locus ID: 492307
 UniProt ID: [Q8WWR9](#)
 Cytogenetics: 8q11.21
 MW: 8.9 kDa

Product images:



Circular map for RC205107



Western blot validation of overexpression lysate (Cat# [LY422807]) using anti-DDK antibody (Cat# [TA50011-100]). Left: Cell lysates from untransfected HEK293T cells; Right: Cell lysates from HEK293T cells transfected with RC205107 using transfection reagent MegaTran 2.0 (Cat# [TT210002]).