

Product datasheet for **RC205106**

MIF (NM_002415) Human Tagged ORF Clone

Product data:

Product Type: Expression Plasmids
Product Name: MIF (NM_002415) Human Tagged ORF Clone
Tag: Myc-DDK
Symbol: MIF
Synonyms: GIF; GLIF; MMIF
Mammalian Cell Selection: Neomycin
Vector: pCMV6-Entry (PS100001)
E. coli Selection: Kanamycin (25 ug/mL)
ORF Nucleotide Sequence: >RC205106 ORF sequence
Red=Cloning site Blue=ORF Green=Tags(s)

TTTTGTAATACGACTCACTATAGGGCGGCCGGAATTCGTCGACTGGATCCGGTACCGAGGAGATCTGCC
GCC**CGATCGCC**

ATGCCGATGTTTCATCGTAAACACCAACGTGCCCGCGCCTCCGTGCCGGACGGGTTCTCTCCGAGCTCA
CCCAGCAGCTGGCGCAGGCCACCGCAAGCCCCCAGTACATCGCGGTGCACGTGGTCCCGACCAGCT
CATGGCCTTCGGCGGCTCCAGCGAGCCGTGCGCGCTCTGCAGCCTGCACAGCATCGGCAAGATCGGCGGC
GCGCAGAACCGCTCTACAGCAAGCTGCTGTGCGGCTGCTGGCCGAGCGCTGCGCATCAGCCCGACA
GGGTCTACATCAACTATTACGACATGAACGCGCCAATGTGGCTGGAACAACCTCCACCTTCGCC

ACGCGTACGCGGCCGCTCGAGCAGAACTCATCTCAGAAGAGGATCTGGCAGCAAATGATATCCTGGATT
ACAAGGATGACGACGATAAGGTTTAA

Protein Sequence: >RC205106 protein sequence
Red=Cloning site Green=Tags(s)

MPMFIVNTNVPASVPDGFSEL TQQLAQATGKPPQYIAVHVVPDQLMAFGGSSEPCALCSLHSIGKIGG
AQNRSYSKLLCGLLAERLRISPDRVYINYYDMNAANVGNWNTFA

TRTRPLEQKLISEEDLAANDILDYKDDDDKV

Chromatograms: https://cdn.origene.com/chromatograms/mk6067_c04.zip

Restriction Sites: SgfI-MluI



[View online »](#)

Cloning Scheme:


ACCN: NM_002415

ORF Size: 345 bp

OTI Disclaimer: The molecular sequence of this clone aligns with the gene accession number as a point of reference only. However, individual transcript sequences of the same gene can differ through naturally occurring variations (e.g. polymorphisms), each with its own valid existence. This clone is substantially in agreement with the reference, but a complete review of all prevailing variants is recommended prior to use. [More info](#)

OTI Annotation: This clone was engineered to express the complete ORF with an expression tag. Expression varies depending on the nature of the gene.

Components: The ORF clone is ion-exchange column purified and shipped in a 2D barcoded Matrix tube containing 10ug of transfection-ready, dried plasmid DNA (reconstitute with 100 ul of water).

- Reconstitution Method:**
1. Centrifuge at 5,000xg for 5min.
 2. Carefully open the tube and add 100ul of sterile water to dissolve the DNA.
 3. Close the tube and incubate for 10 minutes at room temperature.
 4. Briefly vortex the tube and then do a quick spin (less than 5000xg) to concentrate the liquid at the bottom.
 5. Store the suspended plasmid at -20°C. The DNA is stable for at least one year from date of shipping when stored at -20°C.

Note: Plasmids are not sterile. For experiments where strict sterility is required, filtration with 0.22um filter is required.

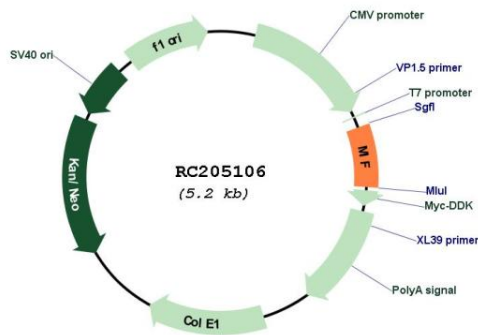
RefSeq: [NM_002415.2](#)

RefSeq Size: 561 bp

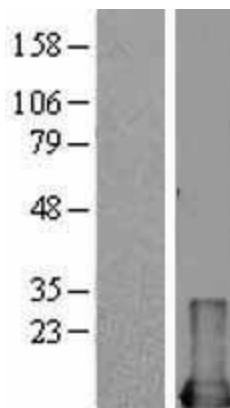
RefSeq ORF: 348 bp

Locus ID: 4282
UniProt ID: [P14174](#)
Cytogenetics: 22q11.23
Domains: MIF
Protein Families: Druggable Genome
Protein Pathways: Phenylalanine metabolism, Tyrosine metabolism
MW: 12.5 kDa
Gene Summary: This gene encodes a lymphokine involved in cell-mediated immunity, immunoregulation, and inflammation. It plays a role in the regulation of macrophage function in host defense through the suppression of anti-inflammatory effects of glucocorticoids. This lymphokine and the JAB1 protein form a complex in the cytosol near the peripheral plasma membrane, which may indicate an additional role in integrin signaling pathways. [provided by RefSeq, Jul 2008]

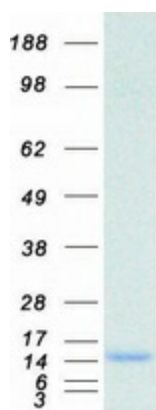
Product images:



Circular map for RC205106



Western blot validation of overexpression lysate (Cat# [LY400864]) using anti-DDK antibody (Cat# [TA50011-100]). Left: Cell lysates from untransfected HEK293T cells; Right: Cell lysates from HEK293T cells transfected with RC205106 using transfection reagent MegaTran 2.0 (Cat# [TT210002]).



Coomassie blue staining of purified MIF protein (Cat# [TP305106]). The protein was produced from HEK293T cells transfected with MIF cDNA clone (Cat# RC205106) using MegaTran 2.0 (Cat# [TT210002]).