

Product datasheet for RC205086

Parvin alpha (PARVA) (NM_018222) Human Tagged ORF Clone

Product data:

Product Type:	Expression Plasmids
Product Name:	Parvin alpha (PARVA) (NM_018222) Human Tagged ORF Clone
Tag:	Myc-DDK
Symbol:	Parvin alpha
Synonyms:	CH-ILKBP; MXRA2
Mammalian Cell Selection:	Neomycin
Vector:	pCMV6-Entry (PS100001)
E. coli Selection:	Kanamycin (25 ug/mL)
ORF Nucleotide Sequence:	>RC205086 ORF sequence Red=Cloning site Blue=ORF Green=Tags(s)

TTTTGTAATACGACTCACTATAGGGCGCCGGGAATTCGTCGACTGGATCCGGTACCGAGGAGATCTGCC
GCC**CGATCGCC**

ATGGCCACCTCCCCGAGAAGTCGCCTTCTGTCCCAAGTCTCCCACTCCCAAGTCGCCCCGTCCCGCA
AGAAAGATGATTCCTTCTGGGGAACTCGGAGGGACCCTGGCCCGGAGGAAGAAAGCCAAGGAGGTGTC
CGAGCTGCAGGAGGAGGAATGAACGCCATCAACCTGCCCTCAGCCCAATTCCTTTGAGCTGGACCCC
GAGGACACGATGCTGGAGGAGAATGAGGTGCGAACAATGGTGGATCCAAACTCACGCAGTGACCCCAAGC
TTCAAGAAGTGAAGGATTAATTGACTGGATTAATGATGTGTGGTTGGAGAAAGAATCATTGTGAA
AGACCTAGCTGAAGATTTGTATGATGGACAAGTCTGCAGAAGCTTTTCGAGAAACTGGAGAGTGAGAAG
CTAAATGTGGCTGAGGTCACCCAGTCAGAGATTGCTCAGAAGCAAAAAGTGCAGACTGTCCTGGAGAAGA
TCAATGAAACCCTGAAACTTCTCCAGGAGCATCAAGTGAATGTGGATTCTGTTCATGCCAAGAGCCT
GGTGGCCATCTTACACCTGCTCGTTGCTGTCTCAGTATTTCCGCGCACCAATTCGACTCCCAGACCAT
GTTTCCATCCAAGTGGTGTGGTCCAGAAACGAGAAGGAATCCTCCAGTCTCGGCAAAATCCAAGAGGAAA
TAACTGTAACACAGAGGCTCTTCCGGGAGGCATGAACGTGATGCCTTTGACACCTTGTTCGACCATGC
CCCAGACAAGCTGAATGTGGTAAAAAGACACTCATCACTTTTCGTGAACAAGCACCTGAATAAAGTGAAC
CTGGAGGTCACAGAAGTGGAAACCCAGTTGCAGATGGGGTGTACCTGGTGTCTCATGGGGCTCCTGG
AGGGCTACTTTGTGCCCCGTCACAGCTTCTCCTGACCCCGGACAGCTTTGAACAGAAGGCTTTGAATGT
CTCCTTTGCCCTTTGAGCTCATGCAAGATGGAGGTTGGAAAAGCCAAAACCGCGGCCAGAAGACATAGTC
AACTGTGACCTGAAATCTACACTACGAGTGTGTACAACCTTTCACCAAGTACCGTAACGTGGAG

ACGCGTACGCGGCCGCTCGAGCAGAAACTCATCTCAGAAGAGGATCTGGCAGCAATGATATCCTGGATT
ACAAGGATGACGACGATAAGGTTTAA



[View online »](#)

Protein Sequence: >RC205086 protein sequence
 Red=Cloning site Green=Tags(s)

MATSPQKSPSPVKSPPTPKSPPSRKKDDSFLLGKLGGLARRKKAKEVSELQEEGMNAINLPLSPIPFELDP
 EDTMLEENEVRTMVDPNRSRDPKQLQELMKVLIDWINDVLVGERIIVKDLAEDLYDGQVLQKLFKLESEK
 LNVAEVTQSEIAQKQKLQTVLEKINETLKLPPRSIKWNVDSVHAKSLVAILHLLVALSQYFRAPIRLPDH
 VSIQVVVVQKREGILQSRQIQEEITGNTALSGRHERDAFDLFDHAPDKLNVVKKTLITFVNKHLNKLN
 LEVTELETQFADGVYLVLLMGLLEGYFVPLHSFFLTPDSFEQKVLNVSF AFELMQDGGLEKPKRPEDIV
 NCDLKSTLRVLYNLF TKYRNV E

TRTRPLEQKLISEEDLAANDILDYKDDDDKV

Chromatograms: https://cdn.origene.com/chromatograms/mk6425_b01.zip

Restriction Sites: SgfI-MluI

Cloning Scheme:



* The last codon before the Stop codon of the ORF

ACCN: NM_018222

ORF Size: 1116 bp

OTI Disclaimer: The molecular sequence of this clone aligns with the gene accession number as a point of reference only. However, individual transcript sequences of the same gene can differ through naturally occurring variations (e.g. polymorphisms), each with its own valid existence. This clone is substantially in agreement with the reference, but a complete review of all prevailing variants is recommended prior to use. [More info](#)

OTI Annotation: This clone was engineered to express the complete ORF with an expression tag. Expression varies depending on the nature of the gene.

Components: The ORF clone is ion-exchange column purified and shipped in a 2D barcoded Matrix tube containing 10ug of transfection-ready, dried plasmid DNA (reconstitute with 100 ul of water).

Reconstitution Method:

1. Centrifuge at 5,000xg for 5min.
2. Carefully open the tube and add 100ul of sterile water to dissolve the DNA.
3. Close the tube and incubate for 10 minutes at room temperature.
4. Briefly vortex the tube and then do a quick spin (less than 5000xg) to concentrate the liquid at the bottom.
5. Store the suspended plasmid at -20°C. The DNA is stable for at least one year from date of shipping when stored at -20°C.

RefSeq: [NM_018222.5](#)

RefSeq Size: 8719 bp

RefSeq ORF: 1119 bp

Locus ID: 55742

UniProt ID: [Q9NVD7](#)

Cytogenetics: 11p15.3

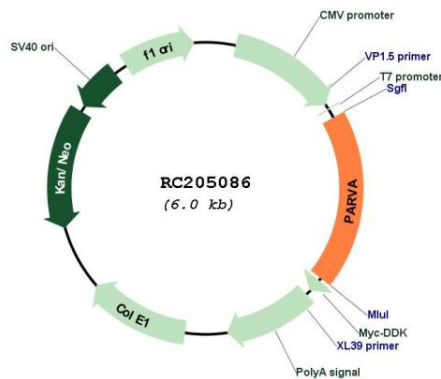
Domains: CH

Protein Pathways: Focal adhesion

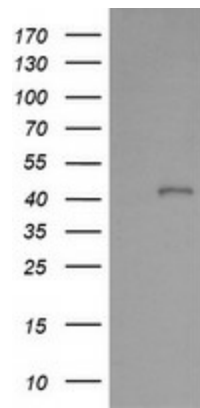
MW: 42.2 kDa

Gene Summary: This gene encodes a member of the parvin family of actin-binding proteins. Parvins are associated with focal contacts and contain calponin homology domains that bind to actin filaments. The encoded protein is part of the integrin-linked kinase signaling complex and plays a role in cell adhesion, motility and survival. [provided by RefSeq, Dec 2010]

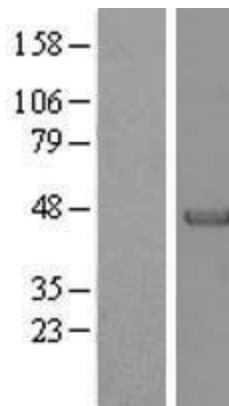
Product images:



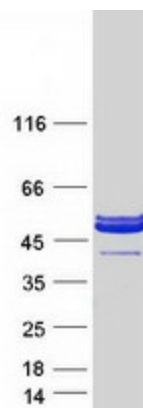
Circular map for RC205086



HEK293T cells were transfected with the pCMV6-ENTRY control (Cat# [PS100001], Left lane) or pCMV6-ENTRY PARVA (Cat# RC205086, Right lane) cDNA for 48 hrs and lysed. Equivalent amounts of cell lysates (5 ug per lane) were separated by SDS-PAGE and immunoblotted with anti-PARVA (Cat# [TA505991]). Positive lysates [LY413202] (100ug) and [LC413202] (20ug) can be purchased separately from OriGene.



Western blot validation of overexpression lysate (Cat# [LY413202]) using anti-DDK antibody (Cat# [TA50011-100]). Left: Cell lysates from untransfected HEK293T cells; Right: Cell lysates from HEK293T cells transfected with RC205086 using transfection reagent MegaTran 2.0 (Cat# [TT210002]).



Coomassie blue staining of purified PARVA protein (Cat# [TP305086]). The protein was produced from HEK293T cells transfected with PARVA cDNA clone (Cat# RC205086) using MegaTran 2.0 (Cat# [TT210002]).