

## Product datasheet for **RC205077**

### **C1orf144 (SZRD1) (NM\_015609) Human Tagged ORF Clone**

#### Product data:

Product Type:	Expression Plasmids
Product Name:	C1orf144 (SZRD1) (NM_015609) Human Tagged ORF Clone
Tag:	Myc-DDK
Symbol:	C1orf144
Synonyms:	C1orf144
Mammalian Cell Selection:	Neomycin
Vector:	pCMV6-Entry (PS100001)
E. coli Selection:	Kanamycin (25 ug/mL)
ORF Nucleotide Sequence:	>RC205077 ORF sequence Red=Cloning site Blue=ORF Green=Tags(s)

TTTTGTAATACGACTCACTATAGGGCGGCCGGAATTCGTCGACTGGATCCGGTACCGAGGAGATCTGCC  
GCC**CGATCGCC**

ATGAGGAGGTCGCTGAGAGCTGGGAAGAGGCGGCAGACAGCGGGCAGGAAATCCAATCTCTCCCAAAG  
TGCCCATTTGTGATTCAGGACGATAGCCTTCCCAGGGGCCCCCTCCACAGATCCGCATCTCAAGAGGCC  
CACCAGCAACGGTGTGGTCAGCAGCCCCAACTCCACCAGCAGGCCACCCTTCCAGTCAAGTCCCTAGCA  
CAGCGAGAGGCCGAGTACGCCGAGGCCGGAAGCGGATCCTGGGCAGCGCCAGCCCCGAGGAGGAGCAGG  
AGAAACCCATCTCGACAGGCCAACAGGATCTCCAACCGAAGACAGCAGGCAGCCCAATAATGTGAT  
CAGACAGCCTTTGGGTCCTGATGGGTCTCAAGGCTTCAAACAGCGCAGA

**ACGCGT**ACGCGGCCGCTCGAGCAGAAACTCATCTCAGAAGAGGATCTGGCAGCAAATGATATCTGGATT  
ACAAGGATGACGACGATAAGGTTTAA

Protein Sequence:	>RC205077 protein sequence Red=Cloning site Green=Tags(s)
-------------------	--

MRRSLRAGKRRQTAGRKSKSPPKVPVIVIQDDSLPAGPPPQIRILKRPTSNQVSSPNSTSRPTLPVKSLA  
QREAEYAEARKRILGSASPEEEQEKPIILDRPTRISQPEDSRQPNNVIRQLPGPDGSQGFQRR

**TR**TRPLEQKLISEEDLAANDILDYKDDDDKV

Chromatograms: [https://cdn.origene.com/chromatograms/mk6426\\_e08.zip](https://cdn.origene.com/chromatograms/mk6426_e08.zip)

Restriction Sites: SgfI-MluI



[View online »](#)

**Cloning Scheme:**


**ACCN:** NM\_015609

**ORF Size:** 399 bp

**OTI Disclaimer:** The molecular sequence of this clone aligns with the gene accession number as a point of reference only. However, individual transcript sequences of the same gene can differ through naturally occurring variations (e.g. polymorphisms), each with its own valid existence. This clone is substantially in agreement with the reference, but a complete review of all prevailing variants is recommended prior to use. [More info](#)

**OTI Annotation:** This clone was engineered to express the complete ORF with an expression tag. Expression varies depending on the nature of the gene.

**Components:** The ORF clone is ion-exchange column purified and shipped in a 2D barcoded Matrix tube containing 10ug of transfection-ready, dried plasmid DNA (reconstitute with 100 ul of water).

- Reconstitution Method:**
1. Centrifuge at 5,000xg for 5min.
  2. Carefully open the tube and add 100ul of sterile water to dissolve the DNA.
  3. Close the tube and incubate for 10 minutes at room temperature.
  4. Briefly vortex the tube and then do a quick spin (less than 5000xg) to concentrate the liquid at the bottom.
  5. Store the suspended plasmid at -20°C. The DNA is stable for at least one year from date of shipping when stored at -20°C.

**RefSeq:** [NM\\_015609.1](#), [NP\\_056424.1](#)

**RefSeq Size:** 3645 bp

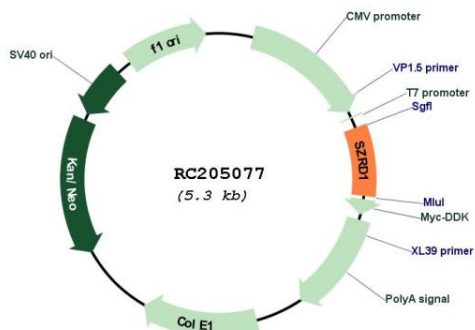
**RefSeq ORF:** 401 bp

**Locus ID:** 26099

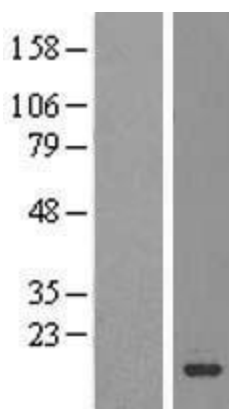
**Cytogenetics:** 1p36.13

MW: 14.8 kDa

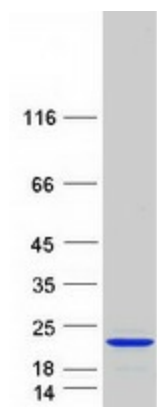
**Product images:**



Circular map for RC205077



Western blot validation of overexpression lysate (Cat# [LY414455]) using anti-DDK antibody (Cat# [TA50011-100]). Left: Cell lysates from untransfected HEK293T cells; Right: Cell lysates from HEK293T cells transfected with RC205077 using transfection reagent MegaTran 2.0 (Cat# [TT210002]).



Coomassie blue staining of purified SZRD1 protein (Cat# [TP305077]). The protein was produced from HEK293T cells transfected with SZRD1 cDNA clone (Cat# RC205077) using MegaTran 2.0 (Cat# [TT210002]).