

## Product datasheet for RC205066

### Viperin (RSAD2) (NM\_080657) Human Tagged ORF Clone

#### Product data:

Product Type:	Expression Plasmids
Product Name:	Viperin (RSAD2) (NM_080657) Human Tagged ORF Clone
Tag:	Myc-DDK
Symbol:	Viperin
Synonyms:	cig5; cig33; vig1
Mammalian Cell Selection:	Neomycin
Vector:	pCMV6-Entry (PS100001)
E. coli Selection:	Kanamycin (25 ug/mL)
ORF Nucleotide Sequence:	>RC205066 ORF sequence Red=Cloning site Blue=ORF Green=Tags(s)

TTTTGTAATACGACTCACTATAGGGCGCCGGGAATTCGTCGACTGGATCCGGTACCGAGGAGATCTGCC  
GCC**CGATCGCC**

ATGTGGGTGCTTACACCTGCTGCTTTTGTCTGGGAAGCTCTTGAGTGTGTTTCAGGCAACCTCTGAGCTCTC  
TGTGGAGGAGCCTGGTCCCGCTGTTCTGCTGGCTGAGGGCAACCTTCTGGCTGCGAGCTACCAAGAGGAG  
AAAGCAGCAGCTGGTCTGAGAGGGCCAGATGAGACCAAAGAGGAGGAAGAGGACCCTCCTCTGCCACC  
ACCCCAACCAGCGTCAACTATCACTTCACTCGCCAGTGAACATAAAATGCGGCTTCTGTTCCACACAG  
CCAAAACATCCTTTGTGCTGCCCTTGAGGAAGCAAAGAGAGGATTGCTTTTGTCTTAAGGAAGCTGGTAT  
GGAGAAGATCAACTTTTCAGGTGGAGAGCCATTTCTTCAAGACCGGGGAGAATACCTGGGCAAGTTGGTG  
AGGTTCTGCAAAGTAGAGTTGCGGCTGCCAGCGTGAGCATCGTGAGCAATGGAAGCCTGATCCGGGAGA  
GGTGGTTCCAGAATTATGGTGAGTATTTGGACATTCTCGCTATCTCCTGTGACAGCTTTGACGAGGAAGT  
CAATGTCTTATTGGCCGTGGCCAAGGAAAGAAGAACCATGTGGAAAACCTTCAAAGCTGAGGAGGTGG  
TGTAGGGATTATAGAGTCGCTTTCAAGATAAATCTGTCTTAAATCGTTTCAACGTGGAAGAGGACATGA  
CGAACAGATCAAAGCACTAAACCCTGTCCGCTGGAAAGTGTCCAGTGCCTCTTAATTGAGGGTGAGAA  
TTGTGGAGAAGATGCTCTAAGAGAAGCAGAAAGATTTGTTATTGGTGATGAAGAATTTGAAAGATTTCTG  
GAGCGCCACAAAGAAGTGTCTGCTTGGTGCCTGAATCTAACAGAAGATGAAAGACTCCTACCTTATTC  
TGGATGAATATATGCGCTTTCTGAACTGTAGAAAAGGACGGAAGGACCCTTCCAAGTCCATCCTGGATGT  
TGGTGTAGAAGAAGCTATAAAATTCAGTGGATTTGATGAAAAGATGTTTCTGAAGCGAGGAGGAAAATAC  
ATATGGAGTAAGGCTGATCTGAAGCTGGATTGG

**ACGCGT**ACGCGGCCGCTCGAGCAGAAACTCATCTCAGAAGAGGATCTGGCAGCAATGATATCCTGGATT  
ACAAGGATGACGACGATAAGGTTTAA



[View online »](#)



**Reconstitution Method:**

1. Centrifuge at 5,000xg for 5min.
2. Carefully open the tube and add 100ul of sterile water to dissolve the DNA.
3. Close the tube and incubate for 10 minutes at room temperature.
4. Briefly vortex the tube and then do a quick spin (less than 5000xg) to concentrate the liquid at the bottom.
5. Store the suspended plasmid at -20°C. The DNA is stable for at least one year from date of shipping when stored at -20°C.

**RefSeq:** [NM\\_080657.1](#)

**RefSeq Size:** 3512 bp

**RefSeq ORF:** 1086 bp

**Locus ID:** 91543

**UniProt ID:** [Q8WXG1](#)

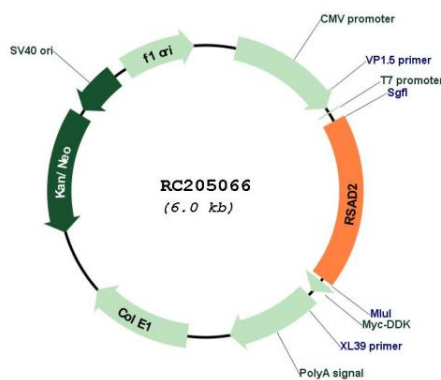
**Cytogenetics:** 2p25.2

**Domains:** Elp3, Radical\_SAM

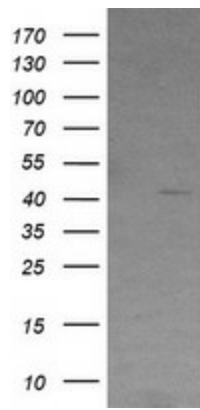
**MW:** 42.2 kDa

**Gene Summary:** The protein encoded by this gene is an interferon-inducible antiviral protein that belongs to the S-adenosyl-L-methionine (SAM) superfamily of enzymes. The protein plays a role in cellular antiviral response and innate immune signaling. Antiviral effects result from inhibition of viral RNA replication, interference in the secretory pathway, binding to viral proteins and dysregulation of cellular lipid metabolism. The protein has been found to inhibit both DNA and RNA viruses, including influenza virus, human immunodeficiency virus (HIV-1) and Zika virus. [provided by RefSeq, Sep 2020]

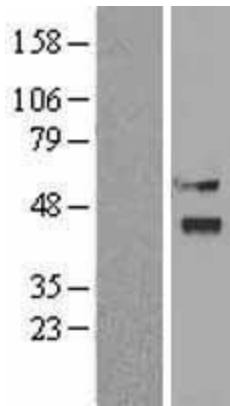
### Product images:



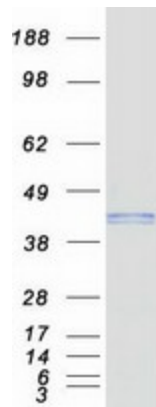
Circular map for RC205066



HEK293T cells were transfected with the pCMV6-ENTRY control (Cat# [PS100001], Left lane) or pCMV6-ENTRY RSAD2 (Cat# RC205066, Right lane) cDNA for 48 hrs and lysed. Equivalent amounts of cell lysates (5 ug per lane) were separated by SDS-PAGE and immunoblotted with anti-RSAD2 (Cat# [TA505799]). Positive lysates [LY403324] (100ug) and [LC403324] (20ug) can be purchased separately from OriGene.



Western blot validation of overexpression lysate (Cat# [LY403324]) using anti-DDK antibody (Cat# [TA50011-100]). Left: Cell lysates from untransfected HEK293T cells; Right: Cell lysates from HEK293T cells transfected with RC205066 using transfection reagent MegaTran 2.0 (Cat# [TT210002]).



Coomassie blue staining of purified RSAD2 protein (Cat# [TP305066]). The protein was produced from HEK293T cells transfected with RSAD2 cDNA clone (Cat# RC205066) using MegaTran 2.0 (Cat# [TT210002]).