

Product datasheet for **RC205059**

KCT2 (C5orf15) (NM_020199) Human Tagged ORF Clone

Product data:

Product Type:	Expression Plasmids
Product Name:	KCT2 (C5orf15) (NM_020199) Human Tagged ORF Clone
Tag:	Myc-DDK
Symbol:	KCT2
Synonyms:	HTGN29; KCT2
Mammalian Cell Selection:	Neomycin
Vector:	pCMV6-Entry (PS100001)
E. coli Selection:	Kanamycin (25 ug/mL)
ORF Nucleotide Sequence:	>RC205059 ORF sequence Red=Cloning site Blue=ORF Green=Tags(s)

TTTTGTAATACGACTCACTATAGGGCGGCCGGAATTCGTCGACTGGATCCGGTACCGAGGAGATCTGCC
GCC**CGATCGCC**

ATGGCCGCTGCCGTCCCGAAGAGGATGAGGGGGCCAGCACAAGCGAAACTGCTGCCCGGGTCGGCCATCC
AAGCCCTTGTGGGGTTGGCGGGCCGCTGGTCTTGGCGCTCTGCTTGTGTCCGCCGCTCTATCCAGTGT
TGTATCACGGACTGATTCACCGAGCCCAACCGTACTCACTCACATATTTCTACCCAAATGTGAATGCT
TTAACACATGAAAACCAAACCAACCTTCTATTTCCCAAATCAGCACCACCTCCCTCCCACGACGAGTA
CCAAGAAAAGTGGAGGAGCATCTGTGGTCCCTCATCCCTCGCCTACTCCTCTGTCTCAAGAGGAAGCTGA
TAACAATGAAGATCCTAGTATAGAGGAGGAGGATCTTCTCATGCTGAACAGTTCTCCATCCACAGCCAAA
GACACTCTAGACAATGGCGATTATGGAGAACCAGACTATGACTGGACCACGGGCCCCAGGGACGACGACG
AGTCTGATGACACCTTGGGAAGAAAACAGGGGTTACATGGAATTGAACAGTCAGTGAAATCTTTTAAAGT
GCCATCTCAAATATAGAAGAGGAAGACAGCCATTTCTTTTTTTCATCTTATTATTTTTGCTTTTTGCATT
GCTGTTGTTTACATTACATATCACAACAAAAGGAAGATTTTTCTTCTGTTCAAAGCAGGAAATGGCGTG
ATGGCCTTTGTTCCAAAACAGTGAATACCATCGCCTAGATCAGAATGTTAATGAGGCAATGCCTCTTT
GAAGATTACCAATGATTATATTTTT

ACGCGTACGCGGCCGCTCGAGCAGAAACTCATCTCAGAAGAGGATCTGGCAGCAAATGATATCCTGGATT
ACAAGGATGACGACGATAAGGTTTAA



[View online »](#)

Protein Sequence: >RC205059 protein sequence
Red=Cloning site Green=Tags(s)

MAAAVPKRMGRPAQAKLLPGSAIQALVGLARPLVLALLL VSAALSSVVSRTDPSPTVLNSHISTPNVNA
 LTHENQTKPSISQIISTTLPTTSTKKSGGASVPHPSPTPLSQEEADNEDPSIEEEDLLMLNSSPSTAK
 DTLDNQDYGEPDYDWTGPRDDDESDDTLEENRGYMEIEQSVKSFKMPSSNIEEEDSHFFHLLIIFAFCI
 AVVYITYHNKRKIFLLVQSRKWRDGLCSKTVEYHRLDQNVNEAMPSLKITNDYIF

TRTRPLEQKLISEEDLAANDILDYKDDDDKV

Chromatograms: https://cdn.origene.com/chromatograms/mk6438_a06.zip

Restriction Sites: SgfI-MluI

Cloning Scheme:



ACCN: NM_020199

ORF Size: 795 bp

OTI Disclaimer: The molecular sequence of this clone aligns with the gene accession number as a point of reference only. However, individual transcript sequences of the same gene can differ through naturally occurring variations (e.g. polymorphisms), each with its own valid existence. This clone is substantially in agreement with the reference, but a complete review of all prevailing variants is recommended prior to use. [More info](#)

OTI Annotation: This clone was engineered to express the complete ORF with an expression tag. Expression varies depending on the nature of the gene.

Components: The ORF clone is ion-exchange column purified and shipped in a 2D barcoded Matrix tube containing 10ug of transfection-ready, dried plasmid DNA (reconstitute with 100 ul of water).

Reconstitution Method:

1. Centrifuge at 5,000xg for 5min.
2. Carefully open the tube and add 100ul of sterile water to dissolve the DNA.
3. Close the tube and incubate for 10 minutes at room temperature.
4. Briefly vortex the tube and then do a quick spin (less than 5000xg) to concentrate the liquid at the bottom.
5. Store the suspended plasmid at -20°C. The DNA is stable for at least one year from date of shipping when stored at -20°C.

RefSeq: [NM_020199.3](#)

RefSeq Size: 2298 bp

RefSeq ORF: 798 bp

Locus ID: 56951

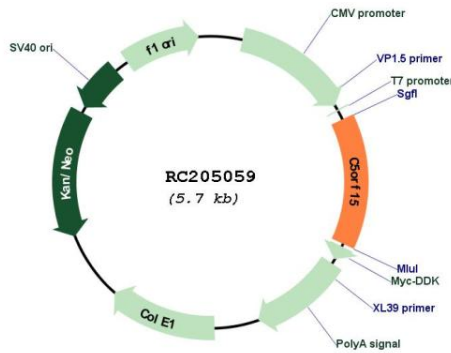
UniProt ID: [Q8NC54](#)

Cytogenetics: 5q31.1

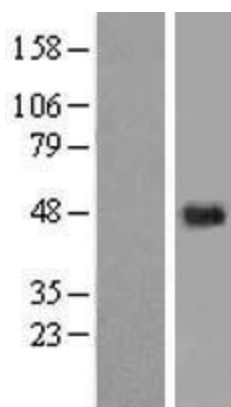
Protein Families: Transmembrane

MW: 29.2 kDa

Product images:



Circular map for RC205059



Western blot validation of overexpression lysate (Cat# [LY412621]) using anti-DDK antibody (Cat# [TA50011-100]). Left: Cell lysates from untransfected HEK293T cells; Right: Cell lysates from HEK293T cells transfected with RC205059 using transfection reagent MegaTran 2.0 (Cat# [TT210002]).