

Product datasheet for **RC205058**

ARSF (NM_004042) Human Tagged ORF Clone

Product data:

Product Type:	Expression Plasmids
Product Name:	ARSF (NM_004042) Human Tagged ORF Clone
Tag:	Myc-DDK
Symbol:	ARSF
Synonyms:	ASF
Mammalian Cell Selection:	Neomycin
Vector:	pCMV6-Entry (PS100001)
E. coli Selection:	Kanamycin (25 ug/mL)



[View online »](#)

ORF Nucleotide Sequence:

>RC205058 ORF sequence
 Red=Cloning site Blue=ORF Green=Tags(s)

TTTTGTAATACGACTCACTATAGGGCGGCCGGGAATTCGTCGACTGGATCCGGTACCGAGGAGATCTGCC
 GCC**CGGATCGCC**

ATGAGGCCAGGAGACCCTTGGTCTTCATGTCTTTGGTGTGTGCACTCTTGAACACATGCCAGGCACACA
 GGGTGCATGACGACAAGCCTAATATTGTCTAATCATGGTTGATGACCTGGGTATTGGAGATCTGGGCTG
 CTACGGCAATGACACCATGAGGACGCCTCACATCGACCGCCTTGCAGGGAAGGCGTGCGACTGACTCAG
 CACATCTCTGCCGCTCCCTCTGCAGCCCAAGCCGGTCCGCGTTCTTGACGGGAAGATACCCCATCCGAT
 CAGGTATGGTTTCTAGTGGTAATAGACGTGTATCCAAAATCTTGACAGTCCCCGAGGCCTCCCTTTAA
 TGAGACAACACTTGCAGCCTTGTAAAGAAGCAAGGATACAGCACGGGGCTTATAGGCAATGGCACCAA
 GGCTTGAAGTGCAGTCCCGAAGTGACCAGTGCCACCATCCATATAATTATGGGTTTACTACTACTATG
 GCATGCCGTTCACTCTGTTGACAGCTGTGGCCGGACCCCTCTCGTAACACGGAATTAGCCTTTGAGAG
 TCAGCTCTGGCTCTGTGTGACAGTAGTGGCATTGCCATCTCACCTAACCTTTGGGAAGCTGAGCGGC
 TGGGTCTCTGTTCCCTGGCTCCTGATCTTCTCCATGATTCTGTTATTTTCTCTTGGGCTATGCTTGGT
 TCTCCAGCCACACGTCCCTTTATACTGGGACTGCCTCCTCATGCGGGGACAGGATACCGGAGCAGCC
 CATGAAGGCTGAACGAGCTGGATCCATTATGGTGAAGGAAGCATTCTCTTTTGAAGGACACAGTAAG
 GAACTTTCTTCTCTTTTCTCTTTCTTACGTGCACACACCTCTCCCACCACGGACGATTTCACTG
 GCACCAGCAAGCATGGCTTGTATGGGGATAATGTGGAAGAGATGGACTCCATGGTGGGCAAGATTCTTGA
 TGCTATCGATGATTTTGGCCTAAGGAACAACACCTTGTCTACTTTACATCAGATCACGGAGGCAATTTG
 GAAGTAGGCGAGGCAATGCCAACTTGGTGGATGGAATGGAATATACAAAGTGGAAAAGGCATGGGG
 GCTGGGAAGGTGGAATCCGCGTCCAGGAATTGTCGATGGCTGGAAAGGTACCAGCTGGACGGTTGAT
 TAAGGAACCTACAAGTTTAAATGGATATTTACCAACTGTCGCATCAGTGTGAGGAGGAAAGTCTCCCTCAG
 GACAGGGTCAATGACGGCCGAGACCTCATGCCCTTGTGTCAGGGCAACGTCAGGCACTCGGAGCATGAAT
 TTCTTTTCCACTACTGTGGCTCTACCTGCACGCCGTGCGGTGGATCCCCAAGGACGACAGTGGTCACT
 TTGGAAGGCTCACTATGTGACCCCGGATTCCAGCCACCAGCTTCTGGTGGCTGCTATGTCACCTCATT
 TGCAGATGTTTCGGAGAACAGGTTACCTACCACAACCCCTCTGCTCTTCGATCTCTCCAGGGACCCCT
 CAGAGTCCACACCCCTGACACCTGCCACAGAGCCCTCTATGATTTTGTGATTAAGGTTGGCCAAACGC
 CCTGAAGGAACACCAGGAAACCATCGTGCCTGTGACCTACCAACTCTCAGAACTGAATCAGGGCAGGACG
 TGGCTGAAGCCTTGTGTGGGGTGTCCCATTTGTCTGTGTGACAAGGAAGAGGAGTCTCTCAGCCTC
 GGGTCTTAACGAGAAGAGA

ACGCGTACGCGGCCGCTCGAGCAGAAACTCATCTCAGAAGAGGATCTGGCAGCAAATGATATCCTGGATT
 ACAAGGATGACGACGATAAGGTTTAA

Protein Sequence:

>RC205058 protein sequence
 Red=Cloning site Green=Tags(s)

MRPRRPLVFMSLVCALLNLCQHRVHDDKPNIVLIMVDDLIGIGDLGCGYNDTMRTPHIDRLAREGVRLTQ
 HISAASLCSRSRFAFLTGRYPPIRSGMVSSGNRRVIQNLAVPAGLPLNETTLAALLKKQGYSTGLIGKWHQ
 GLNCDRSRSDQCHHPYNYGFDYYYGMPFTLVDSWPDPSRNTLAFESQLWLCVQLVAIAILTLTFGKLSG
 WVSVPWLLIFSMILFIFLLGYAWFSSHTSPLYWDCLLMRGHEITEQPMKAERAGSIMVKEAISFLERHSK
 ETFLLFFSFLHVHTPLPTDDFTGTSKHGLYGDNVEEMDSMVGKILDAIDDFGLRNNTLVYFTSDHGGHL
 EARRGHAQLGGWNGIYKGGKMGWEGGIRVPGIVRWPGKVPAGRLIKEPTSLMDILPTVASVSGGSLPQ
 DRVIDGRDLMPLLQGNVRHSEHEFLFHYCGSYLHAVRWIPKDDSGSVWKAHYVTPVFPQPASGGCYVTSL
 CRFCGEQVYHNPLLFDLSDPSESTPLTPATEPLYDFVIKKVANALKEHQETIVPVTYQLSELNQGRT
 WLKPCCGVFPFLCDKKEEVSQPRGPNEKR

TRTRPLEQKLISEEDLAANDILDYKDDDDKV

Chromatograms:

https://cdn.origene.com/chromatograms/mk6068_b01.zip

Restriction Sites: SgfI-MluI

Cloning Scheme:



ACCN: NM_004042

ORF Size: 1770 bp

OTI Disclaimer: The molecular sequence of this clone aligns with the gene accession number as a point of reference only. However, individual transcript sequences of the same gene can differ through naturally occurring variations (e.g. polymorphisms), each with its own valid existence. This clone is substantially in agreement with the reference, but a complete review of all prevailing variants is recommended prior to use. [More info](#)

OTI Annotation: This clone was engineered to express the complete ORF with an expression tag. Expression varies depending on the nature of the gene.

Components: The ORF clone is ion-exchange column purified and shipped in a 2D barcoded Matrix tube containing 10ug of transfection-ready, dried plasmid DNA (reconstitute with 100 ul of water).

- Reconstitution Method:
1. Centrifuge at 5,000xg for 5min.
 2. Carefully open the tube and add 100ul of sterile water to dissolve the DNA.
 3. Close the tube and incubate for 10 minutes at room temperature.
 4. Briefly vortex the tube and then do a quick spin (less than 5000xg) to concentrate the liquid at the bottom.
 5. Store the suspended plasmid at -20°C. The DNA is stable for at least one year from date of shipping when stored at -20°C.

RefSeq: [NM_004042.4](#)

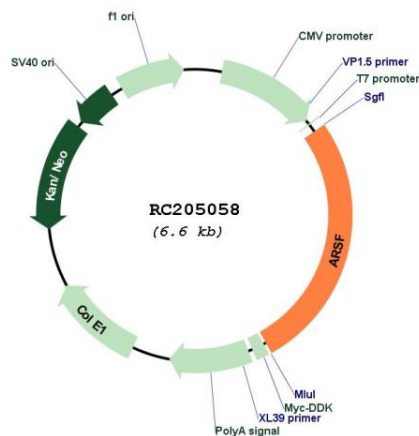
RefSeq Size: 2048 bp

RefSeq ORF: 1773 bp

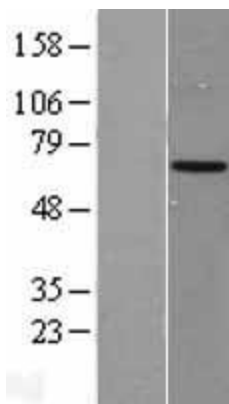
Locus ID: 416

UniProt ID: [P54793](#)
Cytogenetics: Xp22.33
Domains: Sulfatase
Protein Families: Druggable Genome, Secreted Protein, Transmembrane
MW: 66 kDa
Gene Summary: This gene is a member of the sulfatase family, and more specifically, the arylsulfatase subfamily. Members of the subfamily share similarity in sequence and splice sites, and are clustered together on chromosome X, suggesting that they are derived from recent gene duplication events. Sulfatases are essential for the correct composition of bone and cartilage matrix. The activity of this protein, unlike that of arylsulfatase E, is not inhibited by warfarin. Multiple alternatively spliced variants, encoding the same protein, have been identified. [provided by RefSeq, Jan 2011]

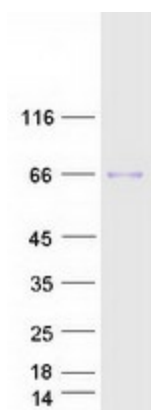
Product images:



Circular map for RC205058



Western blot validation of overexpression lysate (Cat# [LY401310]) using anti-DDK antibody (Cat# [TA50011-100]). Left: Cell lysates from untransfected HEK293T cells; Right: Cell lysates from HEK293T cells transfected with RC205058 using transfection reagent MegaTran 2.0 (Cat# [TT210002]).



Coomassie blue staining of purified ARSF protein (Cat# [TP305058]). The protein was produced from HEK293T cells transfected with ARSF cDNA clone (Cat# RC205058) using MegaTran 2.0 (Cat# [TT210002]).