

Product datasheet for **RC205056**

SLC22A8 (NM_004254) Human Tagged ORF Clone

Product data:

Product Type:	Expression Plasmids
Product Name:	SLC22A8 (NM_004254) Human Tagged ORF Clone
Tag:	Myc-DDK
Symbol:	SLC22A8
Synonyms:	OAT3
Mammalian Cell Selection:	Neomycin
Vector:	pCMV6-Entry (PS100001)
E. coli Selection:	Kanamycin (25 ug/mL)



[View online »](#)

ORF Nucleotide Sequence:

>RC205056 representing NM_004254
 Red=Cloning site Blue=ORF Green=Tags(s)

TTTTGTAATACGACTCACTATAGGGCGGCCGGAATTCGTCGACTGGATCCGGTACCGAGGAGATCTGCC
 GCC**GCGATCGCC**

ATGACCTTCTCGGAGATCCTGGACCGTGTGGGAAGCATGGGCCATTTCCAGTTCCTGCATGTAGCCATAC
 TGGGCCTCCCGATCCTCAACATGGCCAACCACAACCTGCTGCAGATCTTACAGCCGCCACCCTGTCCA
 CCACTGTCGCCCCGCCCAATGCCTCCACAGGCGCTTGGGTGCTCCCATGGGCCCAAATGGGAAGCCT
 GAGAGGTGCCTCCGTTTTGTACATCCGCCCAATGCCAGCCTGCCCAATGACACCCAGAGGGCCATGGAGC
 CATGCCTGGATGGCTGGGTCTACAACAGCACCAAGGACTCCATTGTGACAGAGTGGGACTTGGTGTGCAA
 CTCCAACAACTGAAGGAGATGGCCAGTCTATCTTCATGGCAGGTATACTGATTGGAGGGCTCGTGCTT
 GGAGACCTGTCTGACAGTTTGGCCGAGGCCATCCTGACCTGCAGCTACCTGTGCTGGCAGCCAGCG
 GCTCCGGTGCAGCCTTACGCCCCACCTTCCCCATCTACATGGTCTCCGCTTCTGTGTGGCTTTGGCAT
 CTCAGGCATTACCCTGAGCACCGTCATCTTGAATGTGGAATGGGTGCCTACCCGGATGCGGGCCATCATG
 TCGACAGCACTCGGGTACTGCTACACCTTTGGCCAGTTTATTCTGCCCGGCTGGCTACGCCATCCCCC
 AGTGGCGTTGGCTGCAGTAACTGTGTCCATTCCTTCTCGTCTTCTCCTATCATCTGGTGGACACC
 AGAGTCCATACGCTGGTTGGTCTTGTCTGGAAAGTCTCGAAGGCCCTGAAGATACTCCGGCGGGTGGCT
 GTCTTCAATGGCAAGAAGGAAGAGGGAGAAAGGCTCAGCTTGGAGGAGCTCAAACCAACCTGCAGAAGG
 AGATCTCCTTGGCCAAGGCCAAGTACACCGCAAGTACCTGTCCGGATACCCATGCTGCCCGCATGAC
 CTTCTGTCTTCCCTGGCTGGTTTGTACCGGTTTTGCCTACTATAGTTTGGCTATGGGTGTGGAAGAA
 TTTGGAGTCAACCTCTACATCTCCAGATCATCTTTGGTGGGTGATGTCAGCAAGTTCATACCA
 TCCTCTCCTTAAGCTACCTGGCCGGCATACCCTCAGGCCGCTGCCCTGCTCCTGGCAGGAGGGCCAT
 CTTGGCTCTCACCTTTGTGCCCTTGGACTTGCAGACCGTGAGGACAGTATTGGCTGTGTTTGGGAAGGGA
 TGCTATCCAGCTCCTTCACTGCTCTTCTCTACACAAGTGAATTATACCCACAGTATCAGGCAAA
 CAGGTATGGCGTAAGTAACCTGTGGACCCGCGTGGGAAGCATGGTGTCCCGCTGGTAAAAATCACGGG
 TGAGGTACAGCCCTTATCCCAATATCATCTACGGGATCACCGCCCTCCTCGGGGGCAGTGTGCCCTC
 TTCCTGCCTGAGACCTGAATCAGCCCTGCCAGAGACTATCGAAGACCTGGAAAAGTGGTCCCTGCGGG
 CAAAGAAGCCAAAGCAGGAGCCAGAGGTGAAAAGGCCTCCAGAGGATCCCTCTACAGCCTCACGGACC
 AGCCTGGGCTCCAGC

ACGCGTACGCGGCCGCTCGAGCAGAAACTCATCTCAGAAGAGGATCTGGCAGCAAATGATATCCTGGATT
 ACAAGGATGACGACGATAAGGTTTAA

Protein Sequence:

>RC205056 representing NM_004254
 Red=Cloning site Green=Tags(s)

MTFSEILDRVGSMGHFQFLHVAIILGLPILNMANHNLQIFTAATPVVHCRPPHNASTGPVWVPMGPNGKP
 ERCLRFVHPPNASLPNDTQRAMEPCLDGWVYNSTKDSIVTEWDLVCNSNKLKEMAQSIFMAGILIGGLVL
 GDLSDFRGRRPILTCSYLLLAASGGAFAFSPFPFIYMVFRFLCGFGISGITLSTVILNVEVPTMRMRAIM
 STALGYCYTFGGQFILPGLAYAIQWRWLQTLVSIPIFFVFFLSSWWTPEIRLWVLSGKSSKALKILRRVA
 VFNGKKEEGERLSLEELKLNQKEISLAKAKYASDLFRIPMLRRMTFCLSLAWFATGFAYYSLAMGVEE
 FGVNLYILQIFGGVDVPAKFITILSLSYLRHTTQAAALLLAGGAILALTFVPLDLQTVRVLAVFGKG
 CLSSSFSCFLYSEL YPTVIRQTGMVSNLWTRVGSMSPLVKITGEVQPFIPNIYGITALLGSSAAL
 FLPETLNQPLPETIEDLENWSLRAKKPKQEPEVEKASQRIPLQPHGPGLGSS

TRTRPLEQKLISEEDLAANDILDYKDDDDKV

Chromatograms:

https://cdn.origene.com/chromatograms/mg2627_c07.zip

Restriction Sites:

Sgfl-MluI

Cloning Scheme:



ACCN: NM_004254

ORF Size: 1626 bp

OTI Disclaimer: Due to the inherent nature of this plasmid, standard methods to replicate additional amounts of DNA in E. coli are highly likely to result in mutations and/or rearrangements. Therefore, OriGene does not guarantee the capability to replicate this plasmid DNA. Additional amounts of DNA can be purchased from OriGene with batch-specific, full-sequence verification at a reduced cost. Please contact our customer care team at custsupport@origene.com or by calling 301.340.3188 option 3 for pricing and delivery.

The molecular sequence of this clone aligns with the gene accession number as a point of reference only. However, individual transcript sequences of the same gene can differ through naturally occurring variations (e.g. polymorphisms), each with its own valid existence. This clone is substantially in agreement with the reference, but a complete review of all prevailing variants is recommended prior to use. [More info](#)

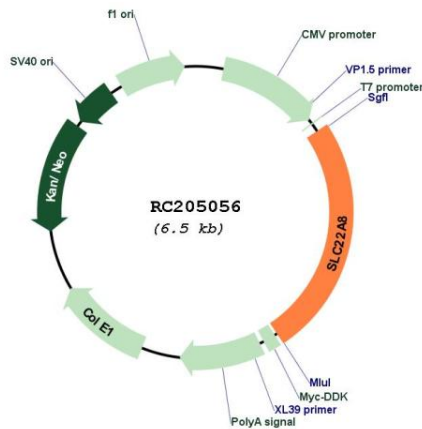
OTI Annotation: This clone was engineered to express the complete ORF with an expression tag. Expression varies depending on the nature of the gene.

Components: The ORF clone is ion-exchange column purified and shipped in a 2D barcoded Matrix tube containing 10ug of transfection-ready, dried plasmid DNA (reconstitute with 100 ul of water).

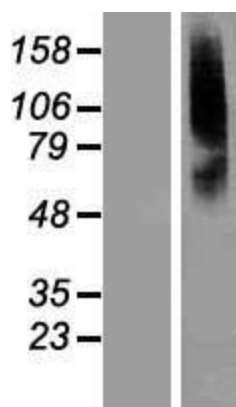
- Reconstitution Method:
1. Centrifuge at 5,000xg for 5min.
 2. Carefully open the tube and add 100ul of sterile water to dissolve the DNA.
 3. Close the tube and incubate for 10 minutes at room temperature.
 4. Briefly vortex the tube and then do a quick spin (less than 5000xg) to concentrate the liquid at the bottom.
 5. Store the suspended plasmid at -20°C. The DNA is stable for at least one year from date of shipping when stored at -20°C.

Note:	Plasmids are not sterile. For experiments where strict sterility is required, filtration with 0.22um filter is required.
RefSeq:	<u>NM_004254.4</u>
RefSeq Size:	2207 bp
RefSeq ORF:	1629 bp
Locus ID:	9376
UniProt ID:	<u>Q8TCC7</u>
Cytogenetics:	11q12.3
Protein Families:	Transmembrane
MW:	59.7 kDa
Gene Summary:	This gene encodes a protein involved in the sodium-independent transport and excretion of organic anions, some of which are potentially toxic. The encoded protein is an integral membrane protein and appears to be localized to the basolateral membrane of the kidney. Multiple alternatively spliced transcript variants that encode different protein isoforms have been described for this gene. [provided by RefSeq, May 2010]

Product images:



Circular map for RC205056



Western blot validation of overexpression lysate (Cat# [LY401365]) using anti-DDK antibody (Cat# [TA50011-100]). Left: Cell lysates from untransfected HEK293T cells; Right: Cell lysates from HEK293T cells transfected with RC205056 using transfection reagent MegaTran 2.0 (Cat# [TT210002]).