

## Product datasheet for **RC205042**

### **IFI44 (NM\_006417) Human Tagged ORF Clone**

#### **Product data:**

Product Type:	Expression Plasmids
Product Name:	IFI44 (NM_006417) Human Tagged ORF Clone
Tag:	Myc-DDK
Symbol:	IFI44
Synonyms:	MTAP44; p44; TLDC5
Mammalian Cell Selection:	Neomycin
Vector:	pCMV6-Entry (PS100001)
E. coli Selection:	Kanamycin (25 ug/mL)



[View online »](#)

**ORF Nucleotide Sequence:**

>RC205042 ORF sequence  
 Red=Cloning site Blue=ORF Green=Tags(s)

TTTTGTAATACGACTCACTATAGGGCGGCCGGGAATTCGTCGACTGGATCCGGTACCGAGGAGATCTGCC  
 GCC**CGCATCGCC**

ATGGCAGTGACAACCTCGTTTGACACGGTTGCACGAAAAGATCCTGCAAAATCATTGAGGGAAGCGGC  
 TTAGCCTTCTCTATAAGGGTAGTGTCCATGGATTCCGTAATGGAGTTTGGCTTGACAGATGTTGTAATCA  
 AGGGCCTACTCTAACAGTGATTTATAGTGAAGATCATATTATTGGAGCATATGCGAAGAGAGTTACCAG  
 GAAGGAAAGTATGCTTCCATCATCTTTTTGCACTTCAAGATACTAAAATTTCAGAATGGAACTAGGAC  
 TATGTACACCAGAACTGTTTTGTTGTGATGTACAAAATAAACTCCCAACTAATTTCCAGATAGA  
 TGGAGAAGTATAGAAAAGTATTATGGACTTAAAGACAATGGAAAATCTTGGACTTGCTCAAAATTGACT  
 ATCTCTATTCAGGATTATGAAGTTTTTCGATGCGAAGATTCAGTGGATGAAAGAAAGATAAAAGGGTCA  
 TTGAGCTCAGGAAGAGCTTACTGTCTGCCTTGAGAACTTATGAACCATATGGATCCCTGGTTCAACAAAT  
 ACGAATTCGCTGCTGGGTCCAATTGGAGCTGGGAAGTCCAGCTTTTTCAACTCAGTGAGGTCTGTTTTC  
 CAAGGGCATGTAACGCATCAGGCTTTGGTGGGCACTAATACAACCTGGGATATCTGAGAAGTATAGGACAT  
 ACTCTATTAGAGACGGGAAAGATGGCAAAATACCTGCCGTTTATTCTGTGTGACTCACTGGGGCTGAGTGA  
 GAAAGAAGGCGGCTGTGCAGGGATGACATATTCTATATCTTGAACGGTAACATTCGTGATAGATACCAG  
 TTTAATCCCATGGAATCAATCAAATTAATCATCATGACTACATTGATCCCATCGCTGAAGGACAGAA  
 TTCATTGTGTGGCATTGTATTTGATGCCAGCTCTATTCAATACTTCTCCTCTCAGATGATAGTAAAGAT  
 CAAAAGAATTCGAAGGGAGTTGGTAAACGCTGGTGTGGTACATGTGGCTTTGCTCACTCATGTGGATAGC  
 ATGGATTTGATTACAAAAGGTGACCTTATAGAAATAGAGAGATGTGAGCCTGTGAGGTCCAAGCTAGAGG  
 AAGTCCAAAGAAAACCTTGATTTGCTCTTTCTGACATCTCGGTGGTTAGCAATTATTCCTCTGAGTGGGA  
 GCTGGACCCTGTAAGGATGTTCTAATTCTTTCTGCTCTGAGACGAATGCTATGGGCTGAGATGACTTC  
 TTAGAGGATTTGCCTTTTGGCAATAGGGAATCTAAGGGAGGAAATTATCAACTGTGCACAAGGAAAAA  
 AA

**ACGCGT**ACGCGGCCGCTCGAGCAGAACTCATCTCAGAAGAGGATCTGGCAGCAATGATATCCTGGATT  
 ACAAGGATGACGACGATAAGGTTTAA

**Protein Sequence:**

>RC205042 protein sequence  
 Red=Cloning site Green=Tags(s)

MAVTTRLTRLHEKILQNHFGGKRLSLLYKGSVHGFNRNGVLLDRCCNQGPLTLVIYSEDHIIGAYAEESYQ  
 EGKYASIIILFALQDTKISEWKLGLCTPETLFCCDVTKYNSPTNFQIDGRNRKVIIMDLKTMENLGLAQNCT  
 ISIQDYEVFRCEDSLDERKIKGVIELRKSLLSALRITYEPYGSVQQIRILLGPIGAGKSSFFNSVRSVF  
 QGHVTHQALVGTNTTGISEKYRTYSIRDGKDGKYLPFILCDSLGLSEKEGGLCRDDIFYILNGNIRDYQ  
 FNPMESIKLNHHDYIDSPSLKDRICVAFVFDASSIQYFSSQMIKIKIRRELVNAGVVHVALLTHVDS  
 MDLITKGDLEIERCEPVRSKLEEVQRKLGALSDISVVSNYSSSEWELDPVKDVLILSALRRMLWAADF  
 LEDLPFEQIGNLREEIINCAQGKK

**TR**TRPLEQKLISEEDLAANDILDYKDDDDKV

**Chromatograms:**

[https://cdn.origene.com/chromatograms/mk6549\\_g02.zip](https://cdn.origene.com/chromatograms/mk6549_g02.zip)

**Restriction Sites:**

Sgfl-Mlul

**Cloning Scheme:**


**ACCN:** NM\_006417

**ORF Size:** 1332 bp

**OTI Disclaimer:** The molecular sequence of this clone aligns with the gene accession number as a point of reference only. However, individual transcript sequences of the same gene can differ through naturally occurring variations (e.g. polymorphisms), each with its own valid existence. This clone is substantially in agreement with the reference, but a complete review of all prevailing variants is recommended prior to use. [More info](#)

**OTI Annotation:** This clone was engineered to express the complete ORF with an expression tag. Expression varies depending on the nature of the gene.

**Components:** The ORF clone is ion-exchange column purified and shipped in a 2D barcoded Matrix tube containing 10ug of transfection-ready, dried plasmid DNA (reconstitute with 100 ul of water).

- Reconstitution Method:**
1. Centrifuge at 5,000xg for 5min.
  2. Carefully open the tube and add 100ul of sterile water to dissolve the DNA.
  3. Close the tube and incubate for 10 minutes at room temperature.
  4. Briefly vortex the tube and then do a quick spin (less than 5000xg) to concentrate the liquid at the bottom.
  5. Store the suspended plasmid at -20°C. The DNA is stable for at least one year from date of shipping when stored at -20°C.

**RefSeq:** [NM\\_006417.3](#)

**RefSeq Size:** 1742 bp

**RefSeq ORF:** 1335 bp

**Locus ID:** 10561

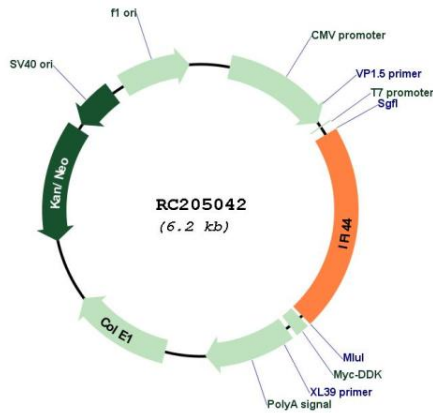
**UniProt ID:** [Q8TCB0](#)

**Cytogenetics:** 1p31.1

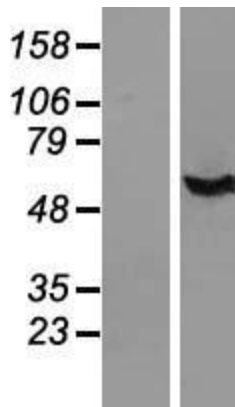
**MW:** 50.5 kDa

**Gene Summary:** This protein aggregates to form microtubular structures.[UniProtKB/Swiss-Prot Function]

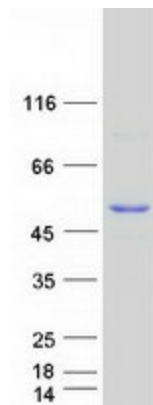
**Product images:**



Circular map for RC205042



Western blot validation of overexpression lysate (Cat# [LY416655]) using anti-DDK antibody (Cat# [TA50011-100]). Left: Cell lysates from untransfected HEK293T cells; Right: Cell lysates from HEK293T cells transfected with RC205042 using transfection reagent MegaTran 2.0 (Cat# [TT210002]).



Coomassie blue staining of purified IFI44 protein (Cat# [TP305042]). The protein was produced from HEK293T cells transfected with IFI44 cDNA clone (Cat# RC205042) using MegaTran 2.0 (Cat# [TT210002]).