

Product datasheet for RC205040

Chymotrypsin (CTRC) (NM_007272) Human Tagged ORF Clone

Product data:

Product Type:	Expression Plasmids
Product Name:	Chymotrypsin (CTRC) (NM_007272) Human Tagged ORF Clone
Tag:	Myc-DDK
Symbol:	Chymotrypsin
Synonyms:	CLCR; ELA4
Mammalian Cell Selection:	Neomycin
Vector:	pCMV6-Entry (PS100001)
E. coli Selection:	Kanamycin (25 ug/mL)
ORF Nucleotide Sequence:	>RC205040 ORF sequence Red=Cloning site Blue=ORF Green=Tags(s)

TTTTGTAATACGACTCACTATAGGGCGGCCGGAATTCGTCGACTGGATCCGGTACCGAGGAGATCTGCC
GCC**CGATCGCC**

ATGTTGGGCATCACTGTCCTCGCTGCGCTCTTGGCCTGTGCCTCCAGCTGTGGGGTGCCAGCTTCCCGC
CCAACCTATCCGCCGAGTGGTGGGAGGAGAGGATGCCCGGCCCCACAGCTGGCCCTGGCAGATCTCCCT
CCAGTACCTCAAGAACGACACGTGGAGGCATACGTGTGGCGGGACTTTGATTGCTAGCAACTTCGTCCTC
ACTGCCGCCCACTGCATCAGCAACACCCGGACCTACCGTGTGGCCGTGGGAAAGAACAACCTGGAGGTGG
AAGACGAAGAAGGATCCCTGTTTGTGGGTGTGGACACCATCCACGTCCACAAGAGATGGAATGCCCTCCT
GTTGCGCAATGATATTGCCCTCATCAAGCTTGAGAGCATGTGGAGCTGAGTGACACCATCCAGGTGGCC
TGCTGCCAGAGAAGGACTCCCTGCTCCCAAGGACTACCCCTGCTATGTACCGGCTGGGGCCGCCTCT
GGACCAACGGCCCATGCTGATAAGCTGCAGCAGGGCCTGCAGCCCGTGGTGGATCACGCCACGTGCTC
CAGGATTGACTGGTGGGGCTTCAGGGTGAAGAAAACCATGGTGTGCGCTGGGGCGATGGCGTCACTCA
GCCTGCAATGGGACTCCGGTGGCCCACTGAACTGCCAGTTGGAGAACGGTTCCTGGGAGGTGTTTGCA
TCGTACGCTTTGGCTCCCGCGGGGCTGCAACACCCGCAAGAAGCCGGTAGTCTACACCCGGGTGTCGC
CTACATCGACTGGATCAACGAGAAAAATGCAGCTG

ACGCGTACGCGGCCGCTCGAGCAGAAACTCATCTCAGAAGAGGATCTGGCAGCAAATGATATCCTGGATT
ACAAGGATGACGACGATAAGGTTTAA



[View online »](#)

Protein Sequence: >RC205040 protein sequence
 Red=Cloning site Green=Tags(s)

MLGITVLAALLACASSCGVPSFPPNLSARVVGGEDARPHSWPQISLQYLKNDTWRHTCGGTLIASNFVL
 TAAHCISNTRTYRVAVGKNNLEVEDEEGLFVGVDTIHVHKRWALLLRNDIALIKLAEHVELSDTIQVA
 CLPEKDSL LPKDYPCYVTGWGRLWTNGPIADKLQQLQPVVDHATCSRIDWWGFRVKKTMVCAGGDGVIS
 ACNGDSGGPLNCQLENGSWEVFGIVSFGSRRGCNTRKKPVVYTRVSAYIDWINEKMQ

TRTRPLEQKLISEEDLAANDILDYKDDDDKV

Chromatograms: https://cdn.origene.com/chromatograms/mk6061_c06.zip

Restriction Sites: SgfI-MluI

Cloning Scheme:

Cloning sites used for ORF Shuttling:



* The last codon before the Stop codon of the ORF

ACCN: NM_007272

ORF Size: 804 bp

OTI Disclaimer: The molecular sequence of this clone aligns with the gene accession number as a point of reference only. However, individual transcript sequences of the same gene can differ through naturally occurring variations (e.g. polymorphisms), each with its own valid existence. This clone is substantially in agreement with the reference, but a complete review of all prevailing variants is recommended prior to use. [More info](#)

OTI Annotation: This clone was engineered to express the complete ORF with an expression tag. Expression varies depending on the nature of the gene.

Components: The ORF clone is ion-exchange column purified and shipped in a 2D barcoded Matrix tube containing 10ug of transfection-ready, dried plasmid DNA (reconstitute with 100 ul of water).

Reconstitution Method:

1. Centrifuge at 5,000xg for 5min.
2. Carefully open the tube and add 100ul of sterile water to dissolve the DNA.
3. Close the tube and incubate for 10 minutes at room temperature.
4. Briefly vortex the tube and then do a quick spin (less than 5000xg) to concentrate the liquid at the bottom.
5. Store the suspended plasmid at -20°C. The DNA is stable for at least one year from date of shipping when stored at -20°C.

RefSeq: [NM_007272.3](#)

RefSeq Size: 917 bp

RefSeq ORF: 807 bp

Locus ID: 11330

UniProt ID: [Q99895](#)

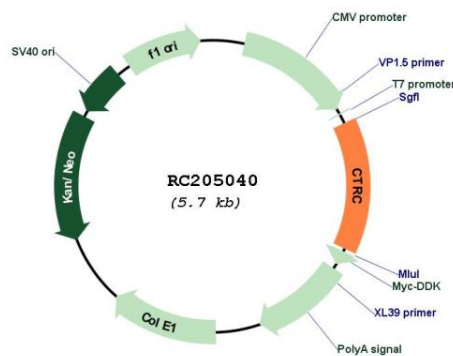
Cytogenetics: 1p36.21

Protein Families: Druggable Genome, Protease

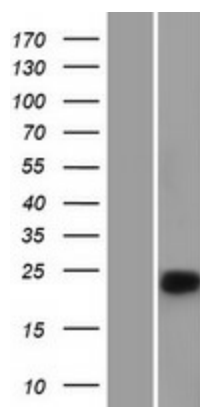
MW: 29.5 kDa

Gene Summary: This gene encodes a member of the peptidase S1 family. The encoded protein is a serum calcium-decreasing factor that has chymotrypsin-like protease activity. Alternatively spliced transcript variants have been observed, but their full-length nature has not been determined. [provided by RefSeq, Jul 2008]

Product images:



Circular map for RC205040



Western blot validation of overexpression lysate (Cat# [LY416082]) using anti-DDK antibody (Cat# [TA50011-100]). Left: Cell lysates from untransfected HEK293T cells; Right: Cell lysates from HEK293T cells transfected with RC205040 using transfection reagent MegaTran 2.0 (Cat# [TT210002]).