

## Product datasheet for **RC205037**

### **SPRYD4 (NM\_207344) Human Tagged ORF Clone**

#### Product data:

Product Type: Expression Plasmids  
Product Name: SPRYD4 (NM\_207344) Human Tagged ORF Clone  
Tag: Myc-DDK  
Symbol: SPRYD4  
Mammalian Cell Selection: Neomycin  
Vector: pCMV6-Entry (PS100001)  
E. coli Selection: Kanamycin (25 ug/mL)  
ORF Nucleotide Sequence: >RC205037 ORF sequence  
Red=Cloning site Blue=ORF Green=Tags(s)

TTTTGTAATACGACTCACTATAGGGCGGCCGGAATTCGTCGACTGGATCCGGTACCGAGGAGATCTGCC  
GCC**CGCATCGCC**

ATGGCGCTGCTTTTTGCACGTTCTTTGCGCTTGTGCCGCTGGGGAGCCAAACGATTGGGAGTTGCCTCCA  
CAGAGGCCAGAGAGGCGTCAGTTTCAAACCTGGAAGAAAAACCGCCACAGCAGCCTGGCACTCTTCAG  
AGATGATACGGGTGTCAAATATGGCTTGGTGGGATTGGAGCCACCAAGGTGGCCTTGAATGTGGAGCGC  
TTCCGGGAGTGGCAGTGGTGTGGCAGACACAGCGGTACCAGTGGCAGACACTACTGGGAAGTGACAG  
TGAAGCGTCCCAGCAGTTCGGATAGGAGTGGCAGATGTGGACATGTCCCGGGATAGCTGCATTGGTGT  
TGATGATCGTTCCCTGGGTGTTCACTATGCCAGCGCAAGTGGTACACCATGTTGGCCAACGAGAAAGCC  
CCAGTTGAGGATTGGGCAGCCAGAGAAGGTGGGCTGTTGCTGGAGTATGAGGCCAGAAAGCTGAGCC  
TGGTGGATGTGAGCCAGGTCTCTGTGGTTCACACGCTACAGACAGATTTCCGGGGTCCAGTGGTGCCTGC  
CTTTGCTCTCTGGGATGGGGAGCTGCTGACCCATTAGGGCTTGAGGTGCCCGAGGGCCTC

**ACGCGT**ACGCGGCCGCTCGAGCAGAACTCATCTCAGAAGAGGATCTGGCAGCAAATGATATCTGGATT  
ACAAGGATGACGACGATAAGGTTTAA

Protein Sequence: >RC205037 protein sequence  
Red=Cloning site Green=Tags(s)

MALLFARSLRLCRWGAKRLGVASTEQRGVSFKLEEKTAHSSLALFRDDTGVKYGLVGLPTKVALNVER  
FREWAVVLADTAVTSGRHYWEVTVKRSQQFRIGVADVMSRDSCIGVDDRSWVFTYAQRKWTMLANEKA  
PVEGIGQPEKVGLLLLLEYEAQKLSLVDVSVVHTLQTDVFRGPVVPALWDGELLTHSGLEVPEGL

**TR**TRPLEQKLISEEDLAANDILDYKDDDDKV

Chromatograms: [https://cdn.origene.com/chromatograms/mk6551\\_c04.zip](https://cdn.origene.com/chromatograms/mk6551_c04.zip)



**Restriction Sites:** SgfI-MluI

**Cloning Scheme:**



**ACCN:** NM\_207344

**ORF Size:** 621 bp

**OTI Disclaimer:** The molecular sequence of this clone aligns with the gene accession number as a point of reference only. However, individual transcript sequences of the same gene can differ through naturally occurring variations (e.g. polymorphisms), each with its own valid existence. This clone is substantially in agreement with the reference, but a complete review of all prevailing variants is recommended prior to use. [More info](#)

**OTI Annotation:** This clone was engineered to express the complete ORF with an expression tag. Expression varies depending on the nature of the gene.

**Components:** The ORF clone is ion-exchange column purified and shipped in a 2D barcoded Matrix tube containing 10ug of transfection-ready, dried plasmid DNA (reconstitute with 100 ul of water).

- Reconstitution Method:**
1. Centrifuge at 5,000xg for 5min.
  2. Carefully open the tube and add 100ul of sterile water to dissolve the DNA.
  3. Close the tube and incubate for 10 minutes at room temperature.
  4. Briefly vortex the tube and then do a quick spin (less than 5000xg) to concentrate the liquid at the bottom.
  5. Store the suspended plasmid at -20°C. The DNA is stable for at least one year from date of shipping when stored at -20°C.

**Note:** Plasmids are not sterile. For experiments where strict sterility is required, filtration with 0.22um filter is required.

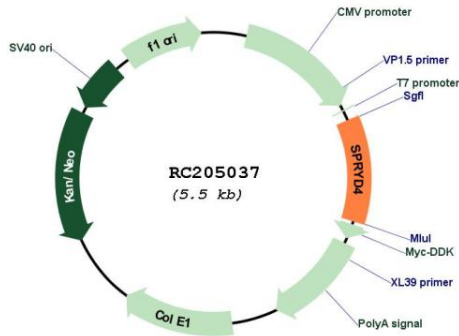
**RefSeq:** [NM\\_207344.4](#)

**RefSeq Size:** 2122 bp

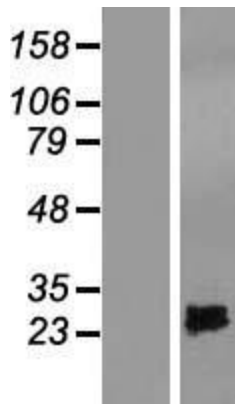
**RefSeq ORF:** 624 bp

Locus ID: 283377  
 UniProt ID: [Q8WW59](#)  
 Cytogenetics: 12q13.3  
 Protein Families: Druggable Genome  
 MW: 23.1 kDa

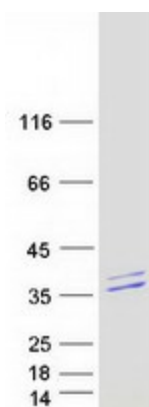
**Product images:**



Circular map for RC205037



Western blot validation of overexpression lysate (Cat# [LY403970]) using anti-DDK antibody (Cat# [TA50011-100]). Left: Cell lysates from untransfected HEK293T cells; Right: Cell lysates from HEK293T cells transfected with RC205037 using transfection reagent MegaTran 2.0 (Cat# [TT210002]).



Coomassie blue staining of purified SPRYD4 protein (Cat# [TP305037]). The protein was produced from HEK293T cells transfected with SPRYD4 cDNA clone (Cat# RC205037) using MegaTran 2.0 (Cat# [TT210002]).