

Product datasheet for **RC205036**

NUDCD2 (NM_145266) Human Tagged ORF Clone

Product data:

Product Type: Expression Plasmids
Product Name: NUDCD2 (NM_145266) Human Tagged ORF Clone
Tag: Myc-DDK
Symbol: NUDCD2
Synonyms: NudCL2
Mammalian Cell Selection: Neomycin
Vector: pCMV6-Entry (PS100001)
E. coli Selection: Kanamycin (25 ug/mL)
ORF Nucleotide Sequence: >RC205036 ORF sequence
Red=Cloning site Blue=ORF Green=Tags(s)

TTTTGTAATACGACTCACTATAGGGCGGCCGGAATTCGTCGACTGGATCCGGTACCGAGGAGATCTGCC
GCC**CGATCGCC**

ATGTCGGCCCCGTTTGAGGAGCGGAGTGGGGTGGTACCGTGCGGGACCCCGTGGGGCCAGTGGTACCAGA
CCTTGGAGGAGGTGTTTCATTGAAGTTCAGGTGCCGCCAGGCACGCGGCCAGGATATCCAGTGGCGCT
CCAGAGCCGGCATGTGGCGCTGTCGGTGGGCGGCCGAGATCCTCAAGGGCAAACCTTTGATTCTACA
ATAGCTGATGAGGAACATGGACTTTGGAGGACAGAAAAATGGTTCGTATTGTTCTTACAAAGACAAAGA
GAGATGCAGCAAATTGTTGGACTTCTCTACTAGAATCTGAATATGCAGCGGATCCTTGGGTGCAAGACCA
AATGCAGAGAAAGCTTACATTAGAGAGATTCCAAAAAGAAAATCCTGGTTTTGACTTCAGTGGAGCAGAA
ATCTCAGGAAACTACACTAAAGGTGGACCAGATTTCTCAAACCTTGAGAAA

ACGCGTACGCGGCCGCTCGAGCAGAAACTCATCTCAGAAGAGGATCTGGCAGCAAATGATATCCTGGATT
ACAAGGATGACGACGATAAGGTTTAA

Protein Sequence: >RC205036 protein sequence
Red=Cloning site Green=Tags(s)

MSAPFEERSGVVPCGTPWQWYQTLLEEVFIEVQVPPGTRAQDIQCGLQSRHVALSVGGREILKGLFDST
IADEGTWLTEDRKMVRIVLTKTKRDAANCWTSLLESEYAADPWQDQMQRKLTLERFQKENPGDFDSGAE
ISGNYTKGGPDFSNLEK

TRTRPLEQKLISEEDLAANDILDYKDDDDKV

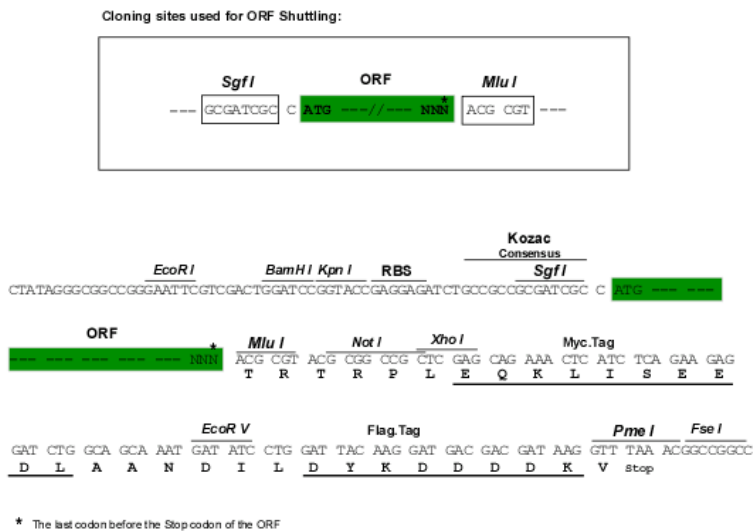
Chromatograms: https://cdn.origene.com/chromatograms/mk6778_b01.zip



[View online >](#)

Restriction Sites: SgfI-MluI

Cloning Scheme:



ACCN: NM_145266

ORF Size: 471 bp

OTI Disclaimer: The molecular sequence of this clone aligns with the gene accession number as a point of reference only. However, individual transcript sequences of the same gene can differ through naturally occurring variations (e.g. polymorphisms), each with its own valid existence. This clone is substantially in agreement with the reference, but a complete review of all prevailing variants is recommended prior to use. [More info](#)

OTI Annotation: This clone was engineered to express the complete ORF with an expression tag. Expression varies depending on the nature of the gene.

Components: The ORF clone is ion-exchange column purified and shipped in a 2D barcoded Matrix tube containing 10ug of transfection-ready, dried plasmid DNA (reconstitute with 100 ul of water).

Reconstitution Method:

1. Centrifuge at 5,000xg for 5min.
2. Carefully open the tube and add 100ul of sterile water to dissolve the DNA.
3. Close the tube and incubate for 10 minutes at room temperature.
4. Briefly vortex the tube and then do a quick spin (less than 5000xg) to concentrate the liquid at the bottom.
5. Store the suspended plasmid at -20°C. The DNA is stable for at least one year from date of shipping when stored at -20°C.

RefSeq: [NM_145266.6](#)

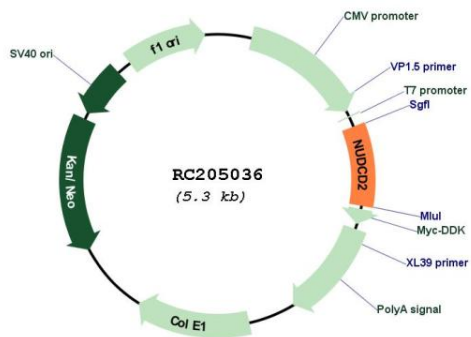
RefSeq Size: 977 bp

RefSeq ORF: 474 bp

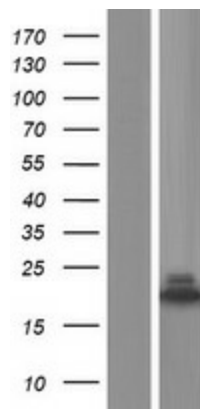
Locus ID: 134492

UniProt ID: [Q8WVJ2](#)
 Cytogenetics: 5q34
 Domains: Nuclear_move
 MW: 17.7 kDa
 Gene Summary: May regulate the LIS1/dynein pathway by stabilizing LIS1 with Hsp90 chaperone. [UniProtKB/Swiss-Prot Function]

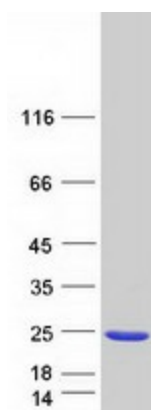
Product images:



Circular map for RC205036



Western blot validation of overexpression lysate (Cat# [LY407991]) using anti-DDK antibody (Cat# [TA50011-100]). Left: Cell lysates from untransfected HEK293T cells; Right: Cell lysates from HEK293T cells transfected with RC205036 using transfection reagent MegaTran 2.0 (Cat# [TT210002]).



Coomassie blue staining of purified NUDCD2 protein (Cat# [TP305036]). The protein was produced from HEK293T cells transfected with NUDCD2 cDNA clone (Cat# RC205036) using MegaTran 2.0 (Cat# [TT210002]).