

## Product datasheet for **RC205035**

### ZKSCAN1 (NM\_003439) Human Tagged ORF Clone

#### Product data:

Product Type:	Expression Plasmids
Product Name:	ZKSCAN1 (NM_003439) Human Tagged ORF Clone
Tag:	Myc-DDK
Symbol:	ZKSCAN1
Synonyms:	KOX18; PHZ-37; ZNF36; ZNF139; ZSCAN33
Mammalian Cell Selection:	Neomycin
Vector:	pCMV6-Entry (PS100001)
E. coli Selection:	Kanamycin (25 ug/mL)



[View online »](#)

**ORF Nucleotide Sequence:**

>RC205035 ORF sequence  
 Red=Cloning site Blue=ORF Green=Tags(s)

TTTTGTAATACGACTCACTATAGGGCGGCCGGAATTCGTCGACTGGATCCGGTACCGAGGAGATCTGCC  
 GCC**CGGATCGCC**

ATGATGACTGCTGAATCACGGGAAGCCACGGGTCTGTCCCACAGGCTGCACAGGAGAAGGATGGTATCG  
 TAATAGCGAAGGTGGAAGAGGAAGATGAGGAAGACCACATGTGGGGCAGGATCCACCCTACAGGACAC  
 GCCTCCTCCAGACCCAGAGATATTCGCAACGCTTCAGGCGCTTCTGTTACCAGAACACTTTTGGGCC  
 CGAGAGGCTCTCAGTCGGCTGAAGGAACTTGTGCATCAGTGGCTGCGGCCAGAAATAACACCAAGGAAC  
 AGATCCTGGAGCTTCTGGTGTAGAGCAGTTTCTTTCCATCCTGCCAAGGAGCTCCAGGCTGGCTGCA  
 GGAATACCGCCCCGATAGTGGAGAGGAGGCCGTGACCCTTCTAGAAGACTTGAGCTTGATTTATCAGGA  
 CAACAGGTCCCAGGTCAGTTCATGGACCTGAGATGCTCGCAAGGGGGATGGTGCCTCTGGATCCAGTTC  
 AGGAGTCTCGAGCTTTGACCTTCATCAGGAGCCACCCAGTCCCACTTCAAACATTCGTCCTCGAAACC  
 CCGCCTTTACAGTCACGAGCTTCTCTGCTGCCACATTCCTGCACCCCTCATGAGGGTAGTCCAGAG  
 GACCAGGCGATGGCATCTGCACTATTCACAGCGGATCCAGGCAATGGTGAAGATCGAGGACATGGCTG  
 TGTCCCTCATTCTGGAGGAATGGGGATGTCAGAATCTGGCTCGGAGGAATCTCAGTAGGGACAACAGGCA  
 GGAGAATTATGGGAGCGCATTCCCCAGGGTGGTAAAAACAGGAATGAGAACGAGGAGTCAACCTCAAAG  
 GCTGAAACCTCGGAAGATTCAGCATCACGCGGGGAGACAACAGGAAGATCCAGAAAAGAGTTTGGAGAGA  
 AACGTGACCAGGAGGGCAAAAACAGGAGAAAACAGCAGAAAAACCTGAGGAGAAAACAGGAAAGAGAA  
 AAGAGATTCAGGGCCAGCTATAGGAAAGGACAAAAAACCATCACAGGAGAGAGAGGTCCAAGGGAGAAG  
 GGGAAAGGATGGGAAGAAGCTTCAGTCTGAGCTCCAACCTCACACCCCTGAAGAAGTCCCACGGGAA  
 CAAAGTCTCACAGATGTGATGAATGTGGTAAATGCTTCACGAGAAGTTCAAGCCTTATCCGCCATAAAA  
 AATCCACACTGGAGAAAAGCCCTATGAATGTAGTGTGGGAAAGCCTTCAGTCTTAACTCCAACCTT  
 GTCCTGCATCAGAGGATCCACACAGGAGAGAAACCTCATGAATGTAAACGAGTGTGGCAAGGCCTTACGC  
 ACAGTTCCAATCTCATCTCCATCAGCGCATCCACTCTGGAGAGAAAACCTTATGAATGTAATGAGTGC  
 GAAGGCCCTCAGCCAGAGCTCGGACCTACCAAGCATCAGAGAATTCACACGGGGAGAAAACCTTATGAA  
 TGTAGTGAATGTGAAAAGCTTTCAACCGAACTCATACTGATTTTGCATCGGAGAATTCACACTCGAG  
 AAAAGCCCTACAAGTGCCTAAGTGTGGCAAGGCCTTACCCGCGAGCTCCACCCTCACTGTCATCAGAG  
 AATCCATGCCAGAGAGAGAGCCTCTGAGTACAGCCAGCCTCCCTTGATGCATTTGGCGCTTCTGAAA  
 AGTTGTGTG

**ACGCGT**ACGCGGCCGCTCGAGCAGAAACTCATCTCAGAAGAGGATCTGGCAGCAAATGATATCCTGGATT  
 ACAAGGATGACGACGATAAGGTTTAA

**Protein Sequence:**

>RC205035 protein sequence  
 Red=Cloning site Green=Tags(s)

MMAESREATGLSPQAAQEKDGIIVIAKVEEEDHDMWGQDSTLQDTPPPDPEIFRQRFRRFCYQNTFGP  
 REALSRLKELCHQWL RPEINTKEQILELLVLEQFLSILPKELQVWLQEYRPDSGEEAVTLLEDLELDL SG  
 QQVPGQVHGPEMLARGMVPLDPVQESSFDLHHEATQSHFKHSSRKPRLLQSRALPAAH I PAPPHEGSPR  
 DQAMASALFTADSQAMVKIEDMAVSLILEEWGCQNLARRNL SRDNRQENYGSAFPQGGENRNEEESTSK  
 AETSEDSASRGETTGRSQKEFGEKRDQEGKTGERQQKNPEEKTRKEKRDSP AIGDKKTI TGERGP  
 GKGLGRSFLSSNFTTPEEVPTGKSHRCDECGKCFTRSSSLIRHKI IHTGEKPYECSECGKAFSLNSNL  
 VLHQR IHTGEKPHCECNECGKAFSHSSNLILHQR IHSGEKPYECNECGKAFSQSSDLTKHQR IHTGEKPYE  
 CSECGKAFNRNSYLILHRR IHTREKPYKCTKCGKAFTRSSLT LHHRIHARERASEYSPASLDAFGAFLK  
 SCV

**TR**TRPLEQKLISEEDLAANDILDYKDDDDKV

**Chromatograms:**

[https://cdn.origene.com/chromatograms/mk6439\\_c10.zip](https://cdn.origene.com/chromatograms/mk6439_c10.zip)

**Restriction Sites:**

Sgfl-Mlul

**Cloning Scheme:**


**ACCN:** NM\_003439

**ORF Size:** 1689 bp

**OTI Disclaimer:** The molecular sequence of this clone aligns with the gene accession number as a point of reference only. However, individual transcript sequences of the same gene can differ through naturally occurring variations (e.g. polymorphisms), each with its own valid existence. This clone is substantially in agreement with the reference, but a complete review of all prevailing variants is recommended prior to use. [More info](#)

**OTI Annotation:** This clone was engineered to express the complete ORF with an expression tag. Expression varies depending on the nature of the gene.

**Components:** The ORF clone is ion-exchange column purified and shipped in a 2D barcoded Matrix tube containing 10ug of transfection-ready, dried plasmid DNA (reconstitute with 100 ul of water).

- Reconstitution Method:**
1. Centrifuge at 5,000xg for 5min.
  2. Carefully open the tube and add 100ul of sterile water to dissolve the DNA.
  3. Close the tube and incubate for 10 minutes at room temperature.
  4. Briefly vortex the tube and then do a quick spin (less than 5000xg) to concentrate the liquid at the bottom.
  5. Store the suspended plasmid at -20°C. The DNA is stable for at least one year from date of shipping when stored at -20°C.

**Note:** Plasmids are not sterile. For experiments where strict sterility is required, filtration with 0.22um filter is required.

**RefSeq:** [NM\\_003439.4](#)

**RefSeq Size:** 9444 bp

**RefSeq ORF:** 1692 bp

**Locus ID:** 7586

UniProt ID: [P17029](#)

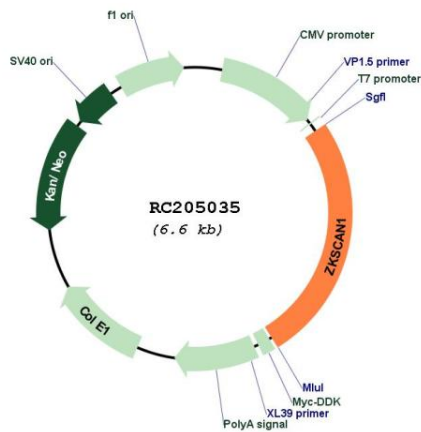
Cytogenetics: 7q22.1

Protein Families: Transcription Factors

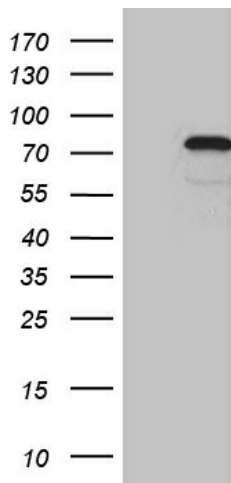
MW: 63.6 kDa

**Gene Summary:** This gene encodes a member of the Kruppel C2H2-type zinc-finger family of proteins. This encoded protein may function as a transcription factor that regulates the expression of GABA type-A receptors in the brain. Transcripts from this gene have been shown to form stable and abundant circular RNAs. Elevated expression of this gene has been observed in gastric cancer and the encoded protein may stimulate migration and invasion of human gastric cancer cells. [provided by RefSeq, Oct 2016]

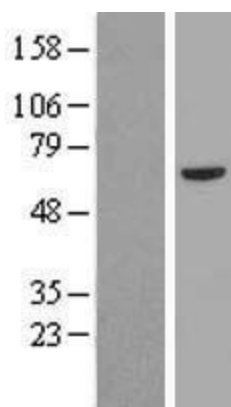
**Product images:**



Circular map for RC205035



HEK293T cells were transfected with the pCMV6-ENTRY control (Cat# [PS100001], Left lane) or pCMV6-ENTRY ZKSCAN1 (Cat# RC205035, Right lane) cDNA for 48 hrs and lysed. Equivalent amounts of cell lysates (5 ug per lane) were separated by SDS-PAGE and immunoblotted with anti-ZKSCAN1 (Cat# [TA810966])(1:2000). Positive lysates [LY418696] (100ug) and [LC418696] (20ug) can be purchased separately from OriGene.



Western blot validation of overexpression lysate (Cat# [LY418696]) using anti-DDK antibody (Cat# [TA50011-100]). Left: Cell lysates from untransfected HEK293T cells; Right: Cell lysates from HEK293T cells transfected with RC205035 using transfection reagent MegaTran 2.0 (Cat# [TT210002]).