

## Product datasheet for **RC205033**

### **RAB2B (NM\_032846) Human Tagged ORF Clone**

#### Product data:

Product Type: Expression Plasmids  
Product Name: RAB2B (NM\_032846) Human Tagged ORF Clone  
Tag: Myc-DDK  
Symbol: RAB2B  
Mammalian Cell Selection: Neomycin  
Vector: pCMV6-Entry (PS100001)  
E. coli Selection: Kanamycin (25 ug/mL)  
ORF Nucleotide Sequence: >RC205033 ORF sequence  
Red=Cloning site Blue=ORF Green=Tags(s)

TTTTGTAATACGACTCACTATAGGGCGGCCGGAATTCGTCGACTGGATCCGGTACCGAGGAGATCTGCC  
GCC**CGATCGCC**

ATGACTTATGCTTATCTCTTCAAGTATATCATCATCGGAGACACAGGTGTGGGAAGTCATGTCTCCTCC  
TGCAGTTTACAGATAAGCGGTTCCAGCCTGTCCACGACCTCACAATAGGTGTGGAGTTTGGAGCTCGTAT  
GGTCAACATTGATGGAAAAAACTCAAAGTCAAATCTGGGATACGGCTGGGCAAGAATCCTTCCGTTCT  
ATCACCCGTTCTACTACAGGGGAGCAGCTGGAGCACTGCTGGTGTACGACATTACAAGGCGTGAAACCT  
TCAACCCTGACCTCATGGTTAGAGGATGCCCGGCAGCACTAGTTCCAACATGGTTATCATGCTCAT  
TGGGAATAAGAGTGACCTAGAGTCCCGCAGGGATGTGAAGAGAGAAGAAGGAGAGGCCTTTGCTAGGGAG  
CATGGACTTATATTCATGGAAACTTCAGCCAAAACAGCCTGCAATGTTGAAGAGGCCTTCATTAACACAG  
CCAAAGAAATATATAGGAAGATCCAGCAGGGTTTATTTGATGTCCACAATGAGGCAAATGGCATCAAGAT  
TGGGCCCAACAGTCAATTTCAACATCAGTGGGACCCAGTGCCTCCAGCGGAACCTCGTGACATAGGG  
TCCAACCTGGCTGCTGC

**ACGCGT**ACGCGGCCGCTCGAGCAGAAACTCATCTCAGAAGAGGATCTGGCAGCAAATGATATCCTGGATT  
ACAAGGATGACGACGATAAGGTTTAA

Protein Sequence: >RC205033 protein sequence  
Red=Cloning site Green=Tags(s)

MTYAYLFKYIIIGDTGVGKSCLLLQFTDKRFQPVHDLTIGVEFGARMVNIDGKQIKLQIWDTAGQESFRS  
ITRSYYRGAAGALLVYDITRRETFNHLTSWLEDARQHSSNMVIMLIGNKSDLESRRDVKREEGEAFARE  
HGLIFMETSAKTACNVEEAFINTAKEIYRKIQQLFDVHNEANGIKIGPQQSISTSVGPSASQRNSRDIG  
SNSGCC

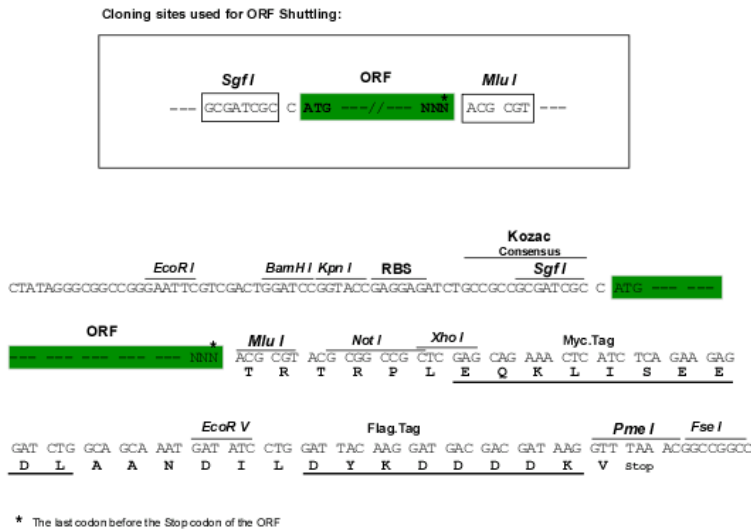
**TR**TRPLEQKLISEEDLAANDILDYKDDDDKV



Chromatograms: [https://cdn.origene.com/chromatograms/mk6549\\_a12.zip](https://cdn.origene.com/chromatograms/mk6549_a12.zip)

Restriction Sites: SgfI-MluI

Cloning Scheme:



ACCN: NM\_032846

ORF Size: 648 bp

OTI Disclaimer: The molecular sequence of this clone aligns with the gene accession number as a point of reference only. However, individual transcript sequences of the same gene can differ through naturally occurring variations (e.g. polymorphisms), each with its own valid existence. This clone is substantially in agreement with the reference, but a complete review of all prevailing variants is recommended prior to use. [More info](#)

OTI Annotation: This clone was engineered to express the complete ORF with an expression tag. Expression varies depending on the nature of the gene.

Components: The ORF clone is ion-exchange column purified and shipped in a 2D barcoded Matrix tube containing 10ug of transfection-ready, dried plasmid DNA (reconstitute with 100 ul of water).

- Reconstitution Method:
1. Centrifuge at 5,000xg for 5min.
  2. Carefully open the tube and add 100ul of sterile water to dissolve the DNA.
  3. Close the tube and incubate for 10 minutes at room temperature.
  4. Briefly vortex the tube and then do a quick spin (less than 5000xg) to concentrate the liquid at the bottom.
  5. Store the suspended plasmid at -20°C. The DNA is stable for at least one year from date of shipping when stored at -20°C.

RefSeq: [NM\\_032846.4](#)

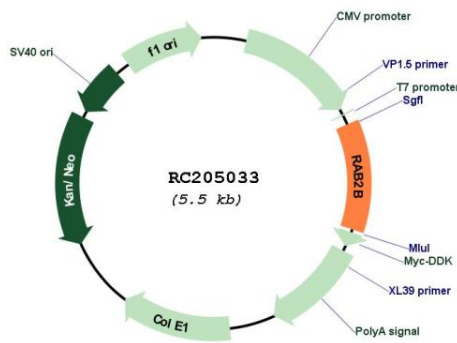
RefSeq Size: 2956 bp

RefSeq ORF: 651 bp

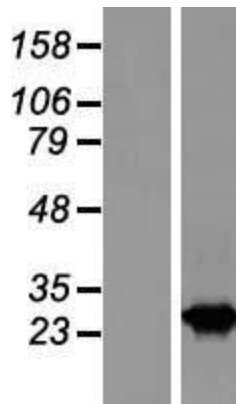
Locus ID: 84932

**UniProt ID:** [Q8WUD1](#)  
**Cytogenetics:** 14q11.2  
**Domains:** ras, RAN, RAS, RHO, RAB  
**Protein Families:** Druggable Genome  
**MW:** 24.2 kDa  
**Gene Summary:** Members of the Rab protein family are nontransforming monomeric GTP-binding proteins of the Ras superfamily that contain 4 highly conserved regions involved in GTP binding and hydrolysis. Rab proteins are prenylated, membrane-bound proteins involved in vesicular fusion and trafficking; see MIM 179508.[supplied by OMIM, Apr 2006]

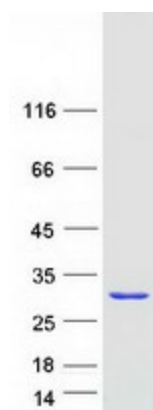
### Product images:



Circular map for RC205033



Western blot validation of overexpression lysate (Cat# [LY409882]) using anti-DDK antibody (Cat# [TA50011-100]). Left: Cell lysates from untransfected HEK293T cells; Right: Cell lysates from HEK293T cells transfected with RC205033 using transfection reagent MegaTran 2.0 (Cat# [TT210002]).



Coomassie blue staining of purified RAB2B protein (Cat# [TP305033]). The protein was produced from HEK293T cells transfected with RAB2B cDNA clone (Cat# RC205033) using MegaTran 2.0 (Cat# [TT210002]).