

## Product datasheet for RC205028

### SDF4 (NM\_016176) Human Tagged ORF Clone

#### Product data:

Product Type:	Expression Plasmids
Product Name:	SDF4 (NM_016176) Human Tagged ORF Clone
Tag:	Myc-DDK
Symbol:	SDF4
Synonyms:	Cab45; SDF-4
Mammalian Cell Selection:	Neomycin
Vector:	pCMV6-Entry (PS100001)
E. coli Selection:	Kanamycin (25 ug/mL)
ORF Nucleotide Sequence:	>RC205028 representing NM_016176 Red=Cloning site Blue=ORF Green=Tags(s)

TTTTGTAATACGACTCACTATAGGGCGGCCGGAATTCGTCGACTGGATCCGGTACCGAGGAGATCTGCC  
GCC**CGATCGCC**

ATGGTCTGGCCCTGGGTGGCGATGGCGTCCAGGTGGGGTCCCCTCATTGGCCTGGCTCCGTGCTGCCTCT  
GGCTCCTGGGGCAGTCCTTCTGATGGACGCGTCTGCACGGCCTGCCAACCACTCGTCCACTCGAGAGAG  
AGTAGCCAACAGGGAGGAGAATGAGATCCTGCCCCAGACCACCTGAACGGGGTGAAGCTGGAGATGGAC  
GGGCACCTCAATCGCGGCTTCCACCAGGAGGTCTTCTAGGCAAGGACCTGGGTGGCTTTGATGAGGACG  
CGGAGCCGCGGGGAGCCGGAGGAAGCTGATGGTCATCTTTTCCAAGGTGGATGTGAACACTGACCGGAA  
GATCAGTGCCAAGGAGATGCAGCGCTGGATCATGGAGAAGACGGCCGAGCACTTCCAGGAGGCCATGGAG  
GAGAGCAAGACACACTTCCGCGCCGTGGACCCTGACGGGGACGGTCACGTGTCTTGGGACGAGTATAAGG  
TGAAGTTTTTGGCGAGTAAAGGCCATAGCGAGAAGGAGTTGCCGACGCCATCAGGCTCAACGAGGAACT  
CAAAGTGGATGAGGAAACACAGGAAGTCTGGAGAACCTGAAGGACCGCTGGTACCAGGCGGACAGCCCC  
CCTGCAGACCTGCTGCTGACGGAGGAGGAGTTCCTGTCTTCTCCACCCGAGCACAGCCGGGGAATGC  
TCAGGTTTCATGGTGAAGGAGATCGTCCGGGACCTGGACCAGGACGGTGACAAGCAGCTCTCTGTGCCGA  
GTTTCATCTCCCTGCCCGTGGGCACCGTGGAGAACCAGCAGGGCCAGGACATTGACGACAACTGGGTGAAA  
GACAGAAAAAAGGAGTTTGAGGAGCTCATTGACTCCAACCACGACGGCATCGTGACCGCCGAGGAGCTGG  
AGAGTACATGGACCCCATGAACGAGTACAACGCGCTGAACGAGGCCAAGCAGATGATCGCCGTCGCCGA  
CGAGAACCAGAACACCACCTGGAGCCCGAGGAGTGCTCAAGTACAGCGAGTTCTTACGGGCAGCAAG  
CTGGTGGACTACGCGCAGCGTGCACGAGGAGTTT

AG**CGGACCG**ACGCGTACGCGGCCGCTCGAGCAGAACTCATCTCAGAAGAGGATCTGGCAGCAAATGATATCC  
TGGATTACAAGGATGACGACGATAAGGTTTAA



[View online »](#)



**Reconstitution Method:**

1. Centrifuge at 5,000xg for 5min.
2. Carefully open the tube and add 100ul of sterile water to dissolve the DNA.
3. Close the tube and incubate for 10 minutes at room temperature.
4. Briefly vortex the tube and then do a quick spin (less than 5000xg) to concentrate the liquid at the bottom.
5. Store the suspended plasmid at -20°C. The DNA is stable for at least one year from date of shipping when stored at -20°C.

**RefSeq:** [NM\\_016176.5](#)

**RefSeq Size:** 2051 bp

**RefSeq ORF:** 1068 bp

**Locus ID:** 51150

**UniProt ID:** [Q9BRK5](#)

**Cytogenetics:** 1p36.33

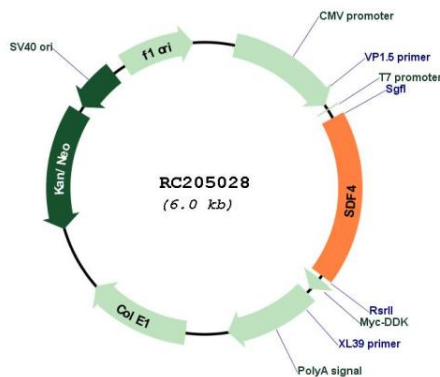
**Domains:** EFh

**Protein Families:** Transmembrane

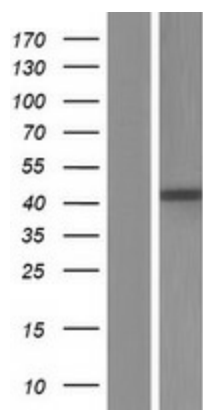
**MW:** 41.8 kDa

**Gene Summary:** This gene encodes a stromal cell derived factor that is a member of the CREC protein family. The encoded protein contains six EF-hand motifs and calcium-binding motifs. This protein localizes to the Golgi lumen and may be involved in regulating calcium dependent cellular activities. [provided by RefSeq, Sep 2011]

## Product images:



Circular map for RC205028



Western blot validation of overexpression lysate (Cat# [LY414146]) using anti-DDK antibody (Cat# [TA50011-100]). Left: Cell lysates from untransfected HEK293T cells; Right: Cell lysates from HEK293T cells transfected with RC205028 using transfection reagent MegaTran 2.0 (Cat# [TT210002]).