

Product datasheet for **RC205025**

TIMM17A (NM_006335) Human Tagged ORF Clone

Product data:

Product Type: Expression Plasmids
Product Name: TIMM17A (NM_006335) Human Tagged ORF Clone
Tag: Myc-DDK
Symbol: TIMM17A
Synonyms: TIM17; TIM17A
Mammalian Cell Selection: Neomycin
Vector: pCMV6-Entry (PS100001)
E. coli Selection: Kanamycin (25 ug/mL)
ORF Nucleotide Sequence: >RC205025 ORF sequence
Red=Cloning site Blue=ORF Green=Tags(s)

TTTTGTAATACGACTCACTATAGGGCGGCCGGAATTCGTCGACTGGATCCGGTACCGAGGAGATCTGCC
GCC**CGGATCGCC**

ATGGAGGAGTACGCGGAGAGCCTTGCCCATGGCAATTGTGGATGACTGTGGTGGGGCCTTTACGATGG
GTACCATGGTGGTGGTATCTTTCAAGCAATCAAAGGTTTTCGCAATTCTCCAGTGGGAGTAAACCACAG
ACTACGAGGGAGTTTACAGCTATTAACCAGGGCTCCACAGTTAGGAGGTAGCTTTGCAGTTTGGGGA
GGGCTGTTTTCCATGATTGACTGTAGTATGGTTCAAGTCAGAGGAAAGGAAGATCCCTGGAACCTCATCA
CAAGTGGTGCCTAACGGGAGCCATACTGGCAGCAAGAAATGGACCAGTGGCCATGGTTGGGTGAGCCGC
AATGGGTGGCATTCTCCTAGCTTAATTGAAGGAGCTGGTATCTTGTGACAAGATTTGCCTCTGCACAG
TTTCCCAATGGTCTCAGTTTGCAGAAGACCCCTCCAGTTGCCCTCAACTCAGTTACCTTCTCACCTT
TTGGAGACTATCGACAATATCAG

ACGCGTACGCGGCCGCTCGAGCAGAACTCATCTCAGAAGAGGATCTGGCAGCAAATGATATCCTGGATT
ACAAGGATGACGACGATAAGGTTTAA

Protein Sequence: >RC205025 protein sequence
Red=Cloning site Green=Tags(s)
MEEYAREPCPWRIVDCCGAFTMGITGGGIFQAIKGFNRNSPVGVNHLRGLSLTAIKTRAPQLGGSFAVWG
GLFSMIDCSMVQVRKEDPWNSITSGALTGAILAARNGPVAMVGSAAAMGGILLALIEGAGILLTRFASAQ
FPNGPQFAEDPSQLPSTQLPSSPFGDYRQYQ

TRTRPLEQKLISEEDLAANDILDYKDDDDKV

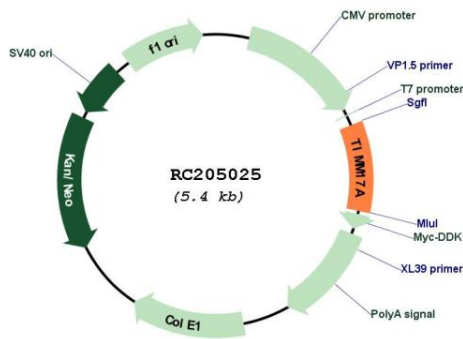
Chromatograms: https://cdn.origene.com/chromatograms/mk6551_c08.zip



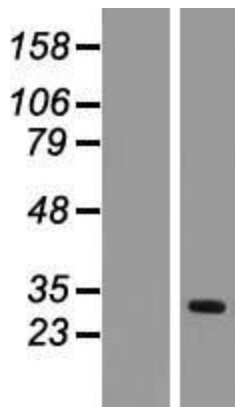
[View online »](#)

Cytogenetics: 1q32.1
Domains: Tim17
Protein Families: Transmembrane
MW: 18 kDa
Gene Summary: Essential component of the TIM23 complex, a complex that mediates the translocation of transit peptide-containing proteins across the mitochondrial inner membrane. [UniProtKB/Swiss-Prot Function]

Product images:



Circular map for RC205025



Western blot validation of overexpression lysate (Cat# [LY416722]) using anti-DDK antibody (Cat# [TA50011-100]). Left: Cell lysates from untransfected HEK293T cells; Right: Cell lysates from HEK293T cells transfected with RC205025 using transfection reagent MegaTran 2.0 (Cat# [TT210002]).